

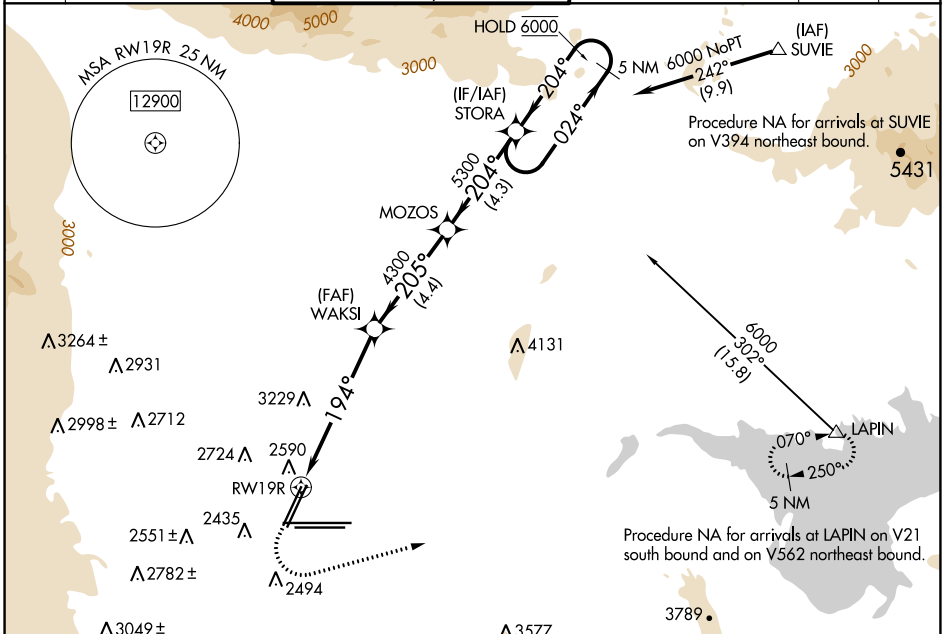
WAAS CH <b>50142</b> <b>W19B</b>	APP CRS <b>194°</b>	Rwy Idg TDZE Apt Elev	<b>8417</b> <b>2117</b> <b>2181</b>
--	------------------------	-----------------------------	---

# RNAV (GPS) Y RWY 19R

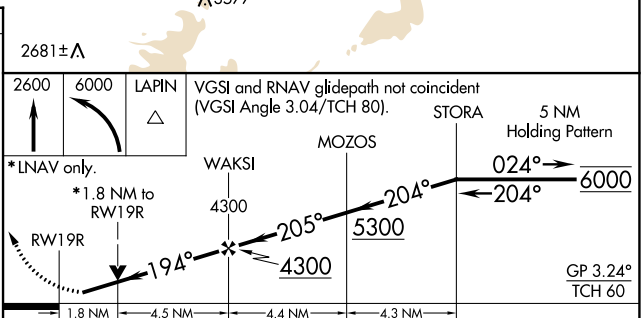
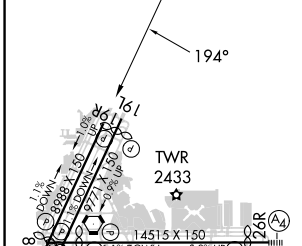
HARRY REID INTL (LAS)

RNP APCH-GPS.		MISSED APPROACH: Climb to 2600 then climbing left turn to 6000 direct LAPIN and hold.	
<p><b>▼</b> Rwy 19R helicopter visibility reduction below 3/4 SM NA. For uncompensated Baro-VNAV systems, LNAV/VNAV NA below 0°C or above 54°C.</p>			

D-ATIS <b>132.4</b>	LAS VEGAS APP CON <b>125.025 379.15</b> (West) <b>119.775 282.2</b> (East)	LAS VEGAS TOWER <b>118.75 257.8</b> (Rwy 1L/19R, 1R/19L) <b>119.9 257.8</b> (Rwy 8L/26R, 8R/26L)	GND CON <b>121.1 270.8</b> E of 1R/19L <b>121.9 254.3</b> W of 1L/19R	CLNC DEL <b>118.0</b>	CPDLC
------------------------	--	--	---	--------------------------	-------



ELEV 2181	<b>D</b>	TDZE 2117
-----------	----------	-----------



CATEGORY	A	B	C	D
LPV DA	2367-3/4	250 (200-3/4)		
LNAV/VNAV DA	2743-1 3/4	626 (600-1 3/4)		
LNAV MDA	2840-1 723 (700-1)	2840-2 723 (700-2)		
<b>C</b> CIRCLING	3020-1 1/4 839 (900-1 1/4)	3060-1 1/4 879 (900-1 1/4)	3100-2 3/4 919 (1000-2 3/4)	3540-3 1359 (1400-3)

MIRL Rwy 1R-19L  
REIL Rwy 1R, 8R, 19L and 19R  
HIRL Rwy 1L-19R, 8L-26R and 8R-26L

SW-4, 31 OCT 2024 to 28 NOV 2024

SW-4, 31 OCT 2024 to 28 NOV 2024