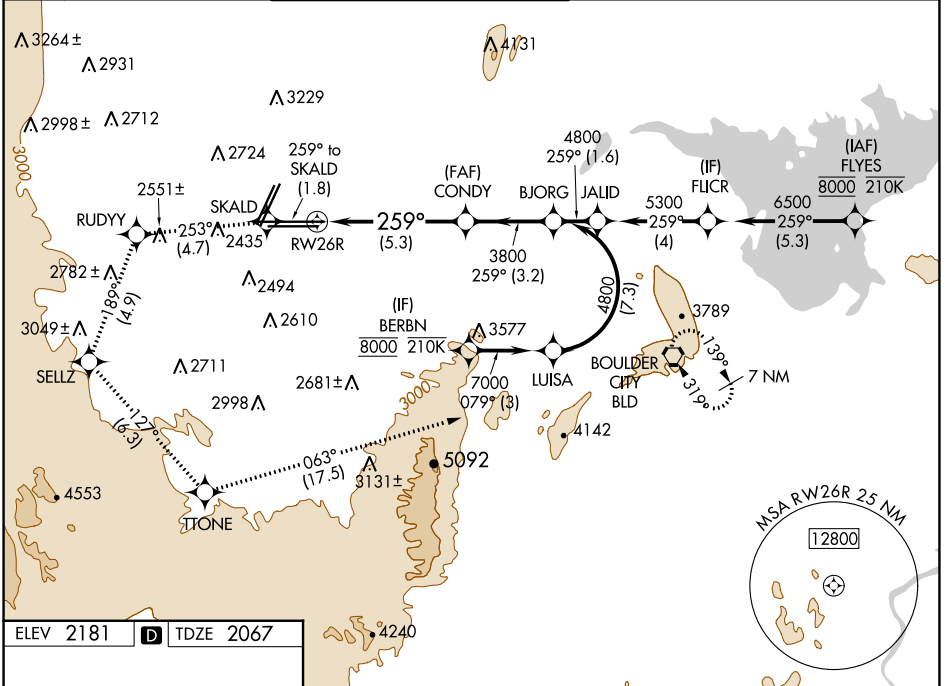


APP CRS <b>259°</b>	Rwy Idg <b>12638</b>
	TDZE <b>2067</b>
	Apt Elev <b>2181</b>

# RNAV (RNP) RWY 26R

HARRY REID INTL (LAS)

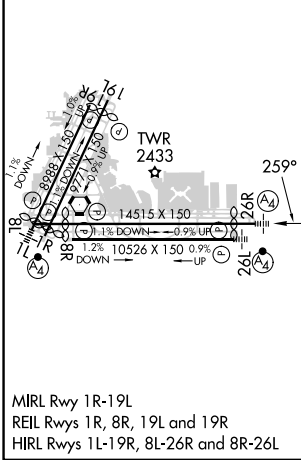
RNP AR APCH-GPS.		MALS	MISSED APPROACH: Cimb to 7000 on the RNAV missed approach route to BLD VORTAC and hold. * Missed approach requires minimum climb of 230 feet per NM to 3200.			
<p>▼ For uncompensated Baro-VNAV systems, procedure NA below -1°C or above 54°C.</p>		(M)				
D-ATIS <b>132.4</b>	LAS VEGAS APP CON <b>125.025 379.15 (West)</b> <b>119.775 282.2 (East)</b>	LAS VEGAS TOWER <b>118.75 257.8 (Rwy 1L/19R, 1R/19L)</b> <b>119.9 257.8 (Rwy 8L/26R, 8R/26L)</b>		GND CON <b>121.1 270.8 E of 1R/19L</b> <b>121.9 254.3 W of 1L/19R</b>	CLNC DEL <b>118.0</b>	CPDLC



SW-4, 03 OCT 2024 to 31 OCT 2024

SW-4, 03 OCT 2024 to 31 OCT 2024

ELEV 2181	<b>D</b>	TDZE 2067
-----------	----------	-----------



7000	SKALD	RUDYY	SELLZ	TTONE	BLD
↑	◆	tr 253°	◆	tr 127°	tr 063°
tr 259°					
VGSI and RNAV glidepath not coincident (VGSI Angle 3.00/TCH 84). See planview for multiple IF locations.					
CONDY		BJORG			
3800		4800		GP 3.00°	
RWY 26R		3800		TCH 60	
-5.3 NM		-3.2 NM			
CATEGORY	A	B	C	D	
RNP 0.30 DA*	2457-7/8		390 (300-7/8)		
RNP 0.30 DA	2508-1		441 (400-1)		
<b>AUTHORIZATION REQUIRED</b>					