

RKSTR FOUR ARRIVAL (RNAV) Transition Routes

SW-4, 31 OCT 2024 to 28 NOV 2024

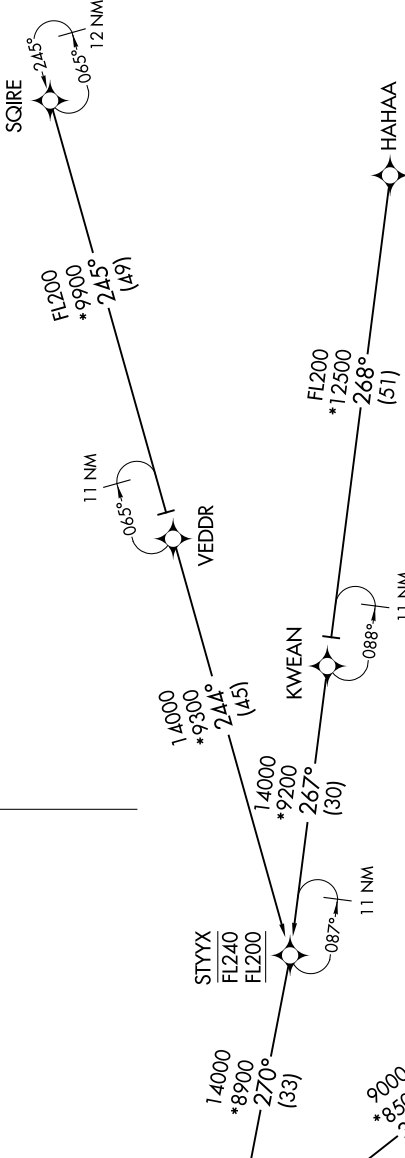
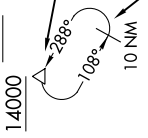
LAS VEGAS APP CON
119.775 282.2
D-ATIS
132.4
LAS VEGAS TOWER
118.75 257.8 (Rwys 1L/19R, 1R/19L)
119.9 257.8 (Rwys 8L/26R, 8R/26L)

RNAV 1 - DME/DME/IRU or GPS.
RADAR required.

See following page
for arrival routes.

PEHTY

16000 250K
14000



NOTE: Jet aircraft only.

NOTE: Chart not to scale.

ELLDA TRANSITION (ELLDA.RKSTR4)

HAHAA TRANSITION (HAHAA.RKSTR4)

SQIRE TRANSITION (SQIRE.RKSTR4)

(CONTINUED ON FOLLOWING PAGE)

SW-4, 31 OCT 2024 to 28 NOV 2024