

WAAS CH 42800 W01A	APP CRS 014°	Rwy Idg TDZE Apt Elev	8785 2170 2181
--	------------------------	-----------------------------	---

RNAV (GPS) RWY 1R

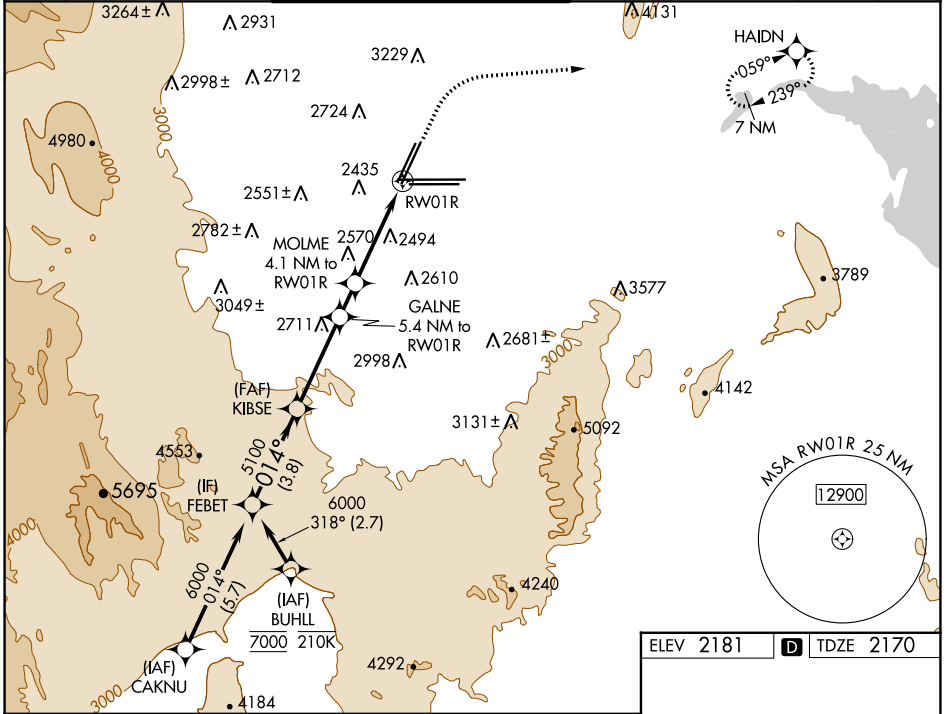
HARRY REID INTL (LAS)

RNP APCH-GPS. RADAR required.

▽ Rwy 1R helicopter visibility reduction below 3/4 SM NA. For uncompensated Baro-VNAV systems, LNAV/VNAV NA below -1°C or above 54°C.

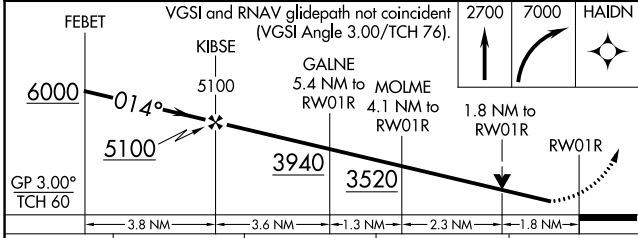
MISSED APPROACH: Climb to 2700 then climbing right turn to 7000 direct HAIN and hold, continue climb-in-hold to 7000.

D-ATIS 132.4	LAS VEGAS APP CON 125.025 379.15 (West) 119.775 282.2 (East)	LAS VEGAS TOWER 118.75 257.8 (Rwy 1L/19R, 1R/19L) 119.9 257.8 (Rwy 8L/26R, 8R/26L)	GND CON 121.1 270.8 E of 1R/19L 121.9 254.3 W of 1L/19R	CLNC DEL 118.0	CPDLC
------------------------	--	--	---	--------------------------	-------



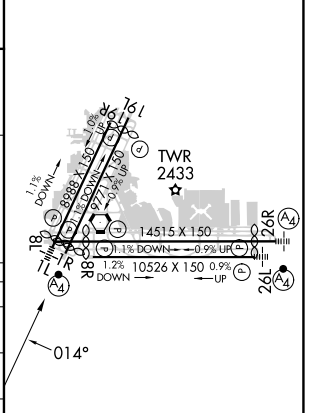
SW-4, 03 OCT 2024 to 31 OCT 2024

SW-4, 03 OCT 2024 to 31 OCT 2024



ELEV 2181	D TDZE 2170
-----------	--------------------

CATEGORY	A	B	C	D
LPV DA	2458-7/8 288 (300-7/8)			
LNAV/VNAV DA	2641-13/8 471 (500-13/8)			
LNAV MDA	2820-1 650 (700-1)	2820-17/8 650 (700-17/8)		
C CIRCLING	3020-11/4 839 (900-11/4)	3060-11/4 879 (900-11/4)	3100-23/4 919 (1000-23/4)	3540-3 1359 (1400-3)



MIRL Rwy 1R-19L
REIL Rws 1R, 8R, 19L and 19R
HIRL Rws 1L-19R, 8L-26R and 8R-26L