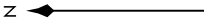


# N1ITZ THREE DEPARTURE (RNAV) Departure Routes

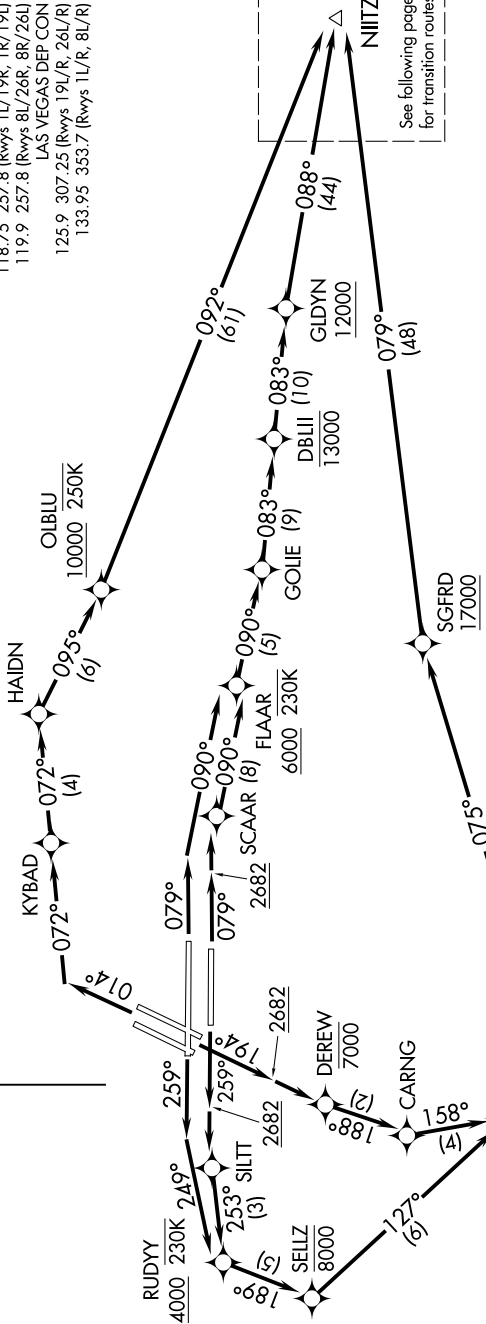
SW-4, 03 OCT 2024 to 31 OCT 2024

**TOP ALTITUDE:**  
FL190

- NOTE: RADAR required for non-GPS equipped aircraft.
- NOTE: Turbojets only.
- NOTE: DME/DME/IRU or GPS required.
- NOTE: RNAV 1.
- NOTE: If unable to accept climb rates, advise ATC on initial contact.



D-ATIS  
132.4  
CLNC DEL  
118.0  
CPDLC  
GND CON  
121.1 270.8 E of 1R/19L  
121.9 254.3 W of 1L/19R  
LAS VEGAS TOWER  
118.75 257.8 (Rwys 1L/19R, 1R/19L)  
119.9 257.8 (Rwys 8L/26R, 8R/26L)  
LAS VEGAS DEP CON  
125.9 307.25 (Rwys 19L/R, 26L/R)  
133.95 353.7 (Rwys 1L/R, 8L/R)



See following page for transition routes

### TAKEOFF MINIMUMS

- Rwys 1L/R: Standard with minimum climb of 500' per NM to 2682 then 280' per NM to 4800.
- Rwys 8L/R: Standard with minimum climb of 500' per NM to 2682.
- Rwys 19L/R: Standard with minimum climb of 500' per NM to 2682 then 270' per NM to 6200.
- Rwys 26L/R: Standard with minimum climb of 500' per NM to 2682 then 240' per NM to 5000.

NOTE: Chart not to scale.

(CONTINUED ON FOLLOWING PAGE)

SW-4, 03 OCT 2024 to 31 OCT 2024

# N1ITZ THREE DEPARTURE (RNAV) Departure Routes