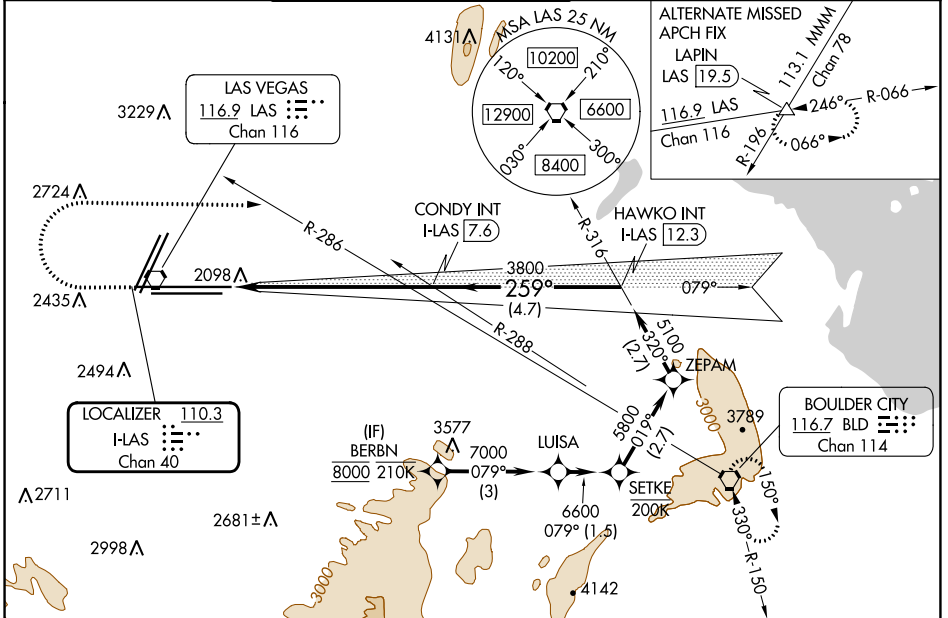


LOC/DME FAS 110.3 Chan 40	APP CRS 259°	Rwy Idg 26R 12638 26L 10526	TDZE 2067 2069	Apt Elev 2181 2181
---	------------------------	---	------------------------------------	--

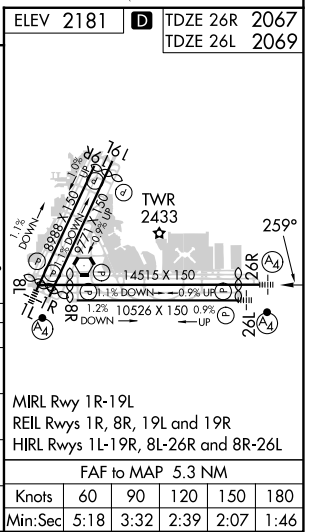
ILS Y or LOC Y RWY 26R

HARRY REID INTL (LAS)

RNP APCH - GPS.		MALS Rwy 26R	MALSF Rwy 26L	MISSED APPROACH: Climb to 3200 then climbing right turn to 6000 heading 080° and on BLD R-286 to BLD VORTAC and hold, continue climb-in-hold to 6000.		
<p>▼ Inop table does not apply to Sidestep 26L. For inop ALS, increase S-ILS-26R all Cats visibility to ½ SM.</p>						
D-ATIS 132.4	LAS VEGAS APP CON 125.025 379.15 (West) 119.775 282.2 (East)	LAS VEGAS TOWER 118.75 257.8 (Rwy 1L/19R, 1R/19L) 119.9 257.8 (Rwy 8L/26R, 8R/26L)		GND CON 121.1 270.8 E of 1R/19L 121.9 254.3 W of 1L/19R	CLNC DEL 118.0	CPDLC



ELEV 3200	6000	BLD R-286	VGSI and ILS glidepath not coincident (VGSI Angle 3.00/TCH 84).	BERBN		
<p>HAWKO INT I-LAS [12.3] ZEPAM SETKE LUISA BERBN</p> <p>CONDY INT I-LAS [7.6] 3800 5100 5800 7000 8000</p> <p>I-LAS [3.6] I-LAS [2.3] 3800 3800</p> <p>079° 019° 079° 079°</p> <p>1.4 NM 4 NM 4.7 NM 2.7 2.7 1.5 3 NM</p>						
CATEGORY	A		B		C	D
S-ILS 26R	2334-¾		267 (200-¾)			
S-LOC 26R	2560-¾ 493 (400-¾)		2560-1½ 493 (400-1½)			
SIDESTEP 26L	2560-1 491 (400-1)		2560-2 491 (400-2)			
CIRCLING	3020-1¼ 839 (900-1¼)		3060-1¼ 879 (900-1¼)		3100-2¾ 919 (1000-2¾)	3540-3 1359 (1400-3)



SW-4, 03 OCT 2024 to 31 OCT 2024

SW-4, 03 OCT 2024 to 31 OCT 2024