

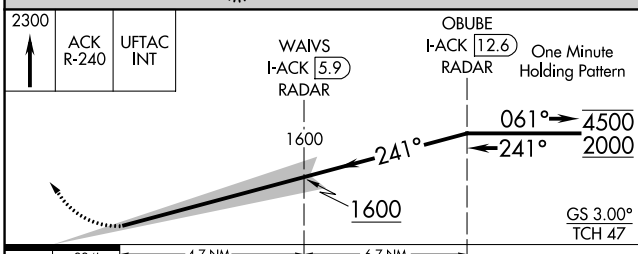
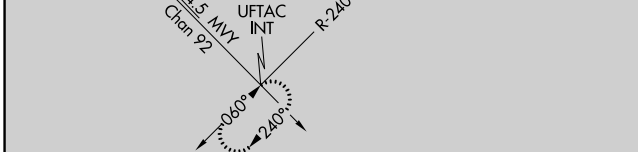
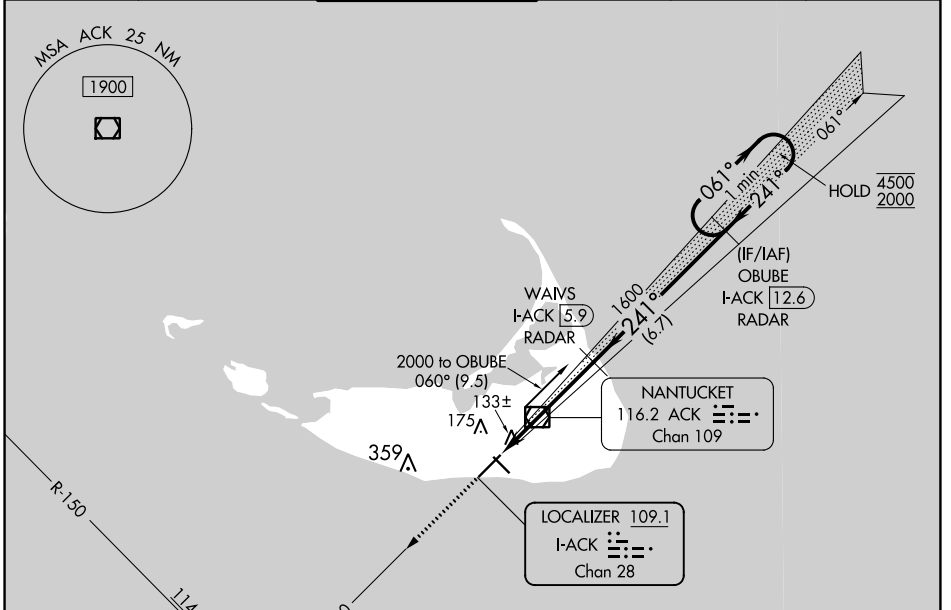
LOC/DME I-ACK <b>109.1</b> Chan <b>28</b>	APP CRS <b>241°</b>	Rwy Idg TDZE Apt Elev	<b>6303</b> <b>47</b> <b>47</b>
---	------------------------	-----------------------------	---------------------------------------

# ILS RWY 24 (SA CAT I)

NANTUCKET MEML (ACK)

DME or RADAR required.		SSALR 	MISSED APPROACH: Climb to 2300 on ACK VOR/DME R-240 direct UFTAC INT and hold.
Procedure NA when control tower closed. Requires specific OPSPEC, MSPEC, or LOA approval.			

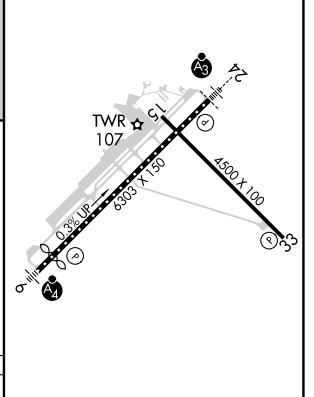
ATIS <b>127.5</b>	BOSTON APP CON <b>126.1 318.1</b>	NANTUCKET TOWER ★ <b>118.3 (CTAF) 0</b>	GND CON <b>132.5</b>	CLNC DEL <b>119.375</b>	UNICOM <b>122.95</b>
----------------------	--------------------------------------	--	-------------------------	----------------------------	-------------------------



CATEGORY	A	B	C	D
S-ILS 24	RA 141/14 150		DA 197	

**SA CAT I ILS - SPECIAL AIRCREW & AIRCRAFT CERTIFICATION REQUIRED**

ELEV 47	D	TDZE 47
---------	---	---------



TDZ/CL Rwy 24  
HIRL Rwy 6-24 0  
MIRL Rwy 15-33 0  
REIL Rwsy 15 and 33

NE-1, 26 DEC 2024 to 23 JAN 2025

NE-1, 26 DEC 2024 to 23 JAN 2025