

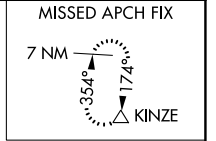
WAAS CH 53709 W07A	APP CRS 071°	Rwy Idg TDZE Apt Elev	5371 3702 3732
--	------------------------	-----------------------------	---

RNAV (GPS) RWY 7

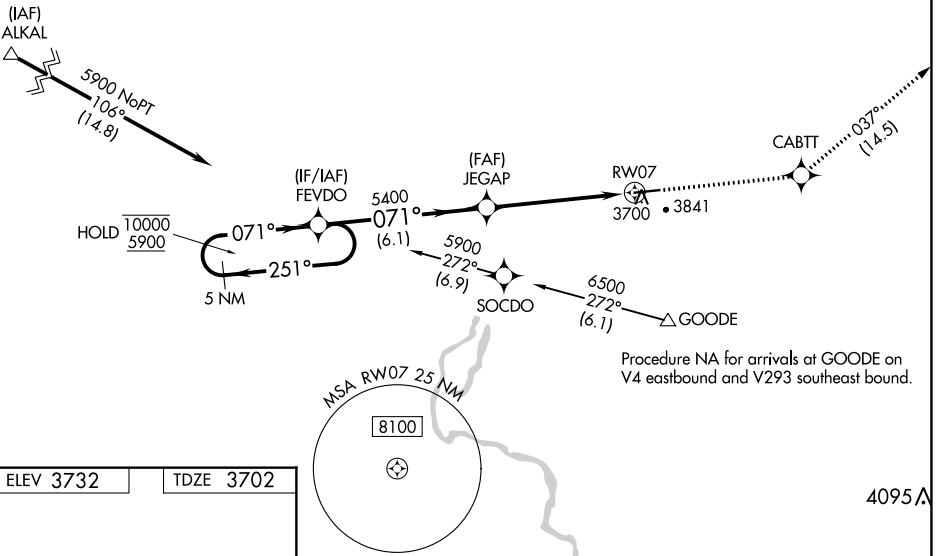
GOODING MUNI (GNG)

RNP APCH-GPS.	MISSED APPROACH: Climb to 7400 direct CABTT and on track 037° to KINZE and hold.
<p>▼ For uncompensated Baro-VNAV systems, procedure NA below -22°C or above 54°C.</p> <p>▲</p>	

AWOS-3PT 124.175	SALT LAKE CENTER 118.05 363.0	UNICOM 122.8 (CTAF) 0*
----------------------------	---	----------------------------------



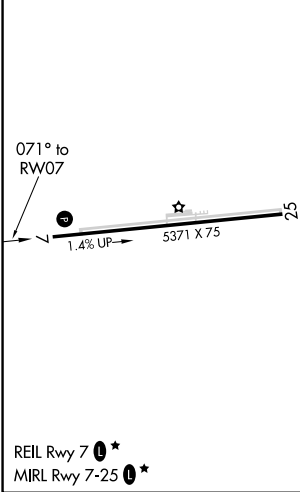
Procedure NA for arrivals at ALKAL on V253 northwest bound and V330 southwest bound.



NW-1, 19 MAY 2022 to 16 JUN 2022

NW-1, 19 MAY 2022 to 16 JUN 2022

ELEV 3732	TDZE 3702
-----------	-----------



VGS1 and RNAV glidepath not coincident (VGS1 Angle 2.75/TCH 40).		7400	CABTT	KINZE
5 NM Holding Pattern		↑	✧	tr 037° △
10000 ← 251°		*LNAV only		
5900 → 071°		*0.8 NM to RWY07		
JEGAP 5400		RWY07		
5400		0.8		
6.1 NM		4.5 NM		
CATEGORY	A	B	C	D
LPV DA		3952-¾	250 (300-¾)	
LNAV/VNAV DA		3952-¾	250 (300-¾)	
LNAV MDA	3960-1	258 (300-1)	3960-¾	258 (300-¾)