

WAAS CH <b>61022</b> <b>W23A</b>	APP CRS <b>233°</b>	Rwy Idg TDZE Apt Elev	<b>5001</b> <b>144</b> <b>148</b>
--	------------------------	-----------------------------	---

# RNAV (GPS) RWY 23

LAWRENCE MUNI (LWM)

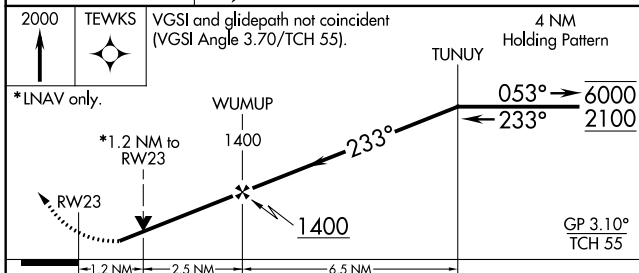
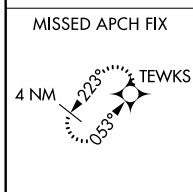
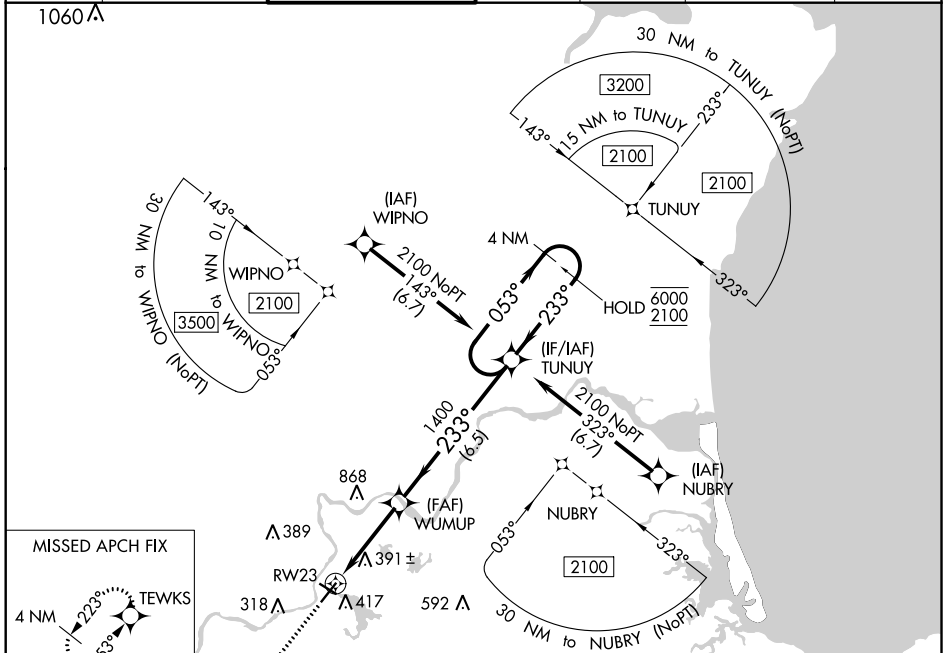
RNP APCH.

**⚠** Circling Rwy 32 NA at night. Rwy 23 helicopter visibility reduction below 3/4 SM NA.  
**⚠** For uncompensated Baro-VNAV systems, LNAV/VNAV NA below -20°C or above 54°C.

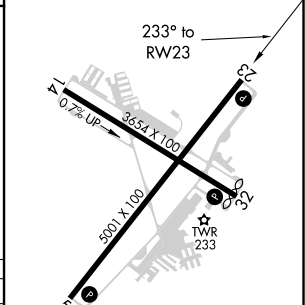
MISSED APPROACH: Climb to 2000 direct TEWKS and hold.

ATIS <b>126.75</b>	BOSTON APP CON <b>124.4 279.6</b>	LAWRENCE TOWER * <b>119.25 (CTAF)</b> <b>📻</b>	GND CON <b>124.3</b>	CLNC DEL <b>124.3</b>	CLNC DEL <b>126.15</b> (When twr closed)	UNICOM <b>122.8</b>
-----------------------	--------------------------------------	---	-------------------------	--------------------------	--	------------------------

1060 **Δ**



ELEV 148	TDZE 144
----------	----------



CATEGORY	A	B	C	D
LPV DA		562-1 1/8	418 (500-1 1/8)	
LNAV/VNAV DA		717-1 1/8	573 (600-1 1/8)	
LNAV MDA	660-1	516 (600-1)	660-1 3/8	516 (600-1 3/8)
<b>C</b> CIRCLING	740-1	592 (600-1)	840-2 692 (700-2)	1220-3 1072 (1100-3)

REIL Rwy 5, 23 and 32 **📻**  
 HIRL Rwy 5-23 **📻**  
 MIRL Rwy 14-32 **📻**

NE-1, 30 DEC 2021 to 27 JAN 2022

NE-1, 30 DEC 2021 to 27 JAN 2022