

VOR/DME GDM 116.95 Chan 116 (Y)	APP CRS 347°	Rwy Idg TDZE Apt Elev	5000 998 1009
--	------------------------	-----------------------------	--

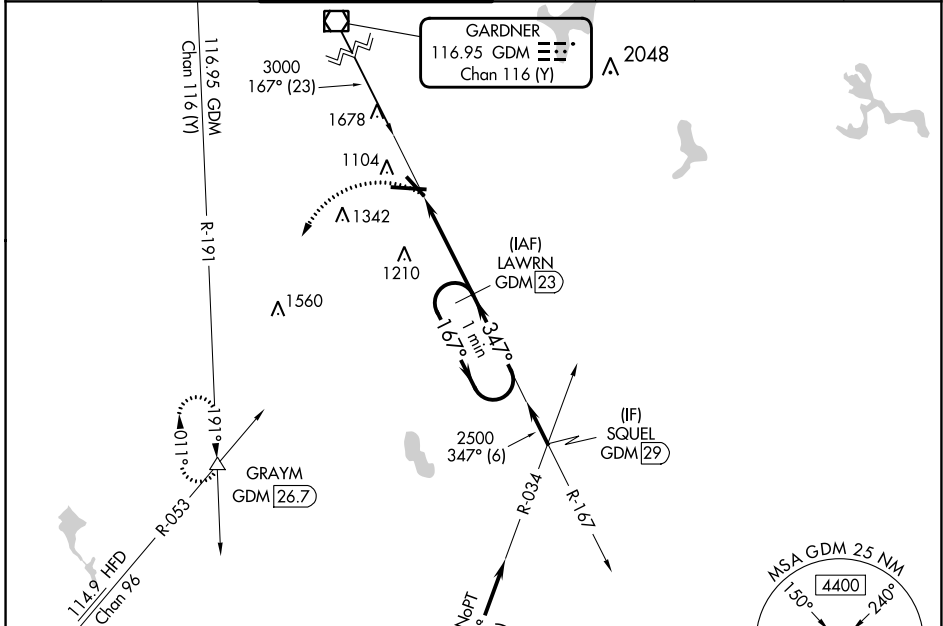
VOR/DME RWY 33

WORCESTER RGNL (ORH)

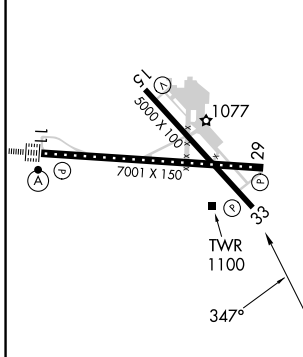
⚠ When local altimeter setting not received, use Bedford altimeter setting and increase all MDAs 200 feet; increase S-33 Cat C/D visibility ½ SM and Circling Cat B ¼ SM.

MISSED APPROACH: Climbing left turn to 3000 on heading 240° and GDM VOR/DME R-191 to GRAYM INT/GDM 26.7 DME and hold.

ATIS 126.55	BRADLEY APP CON 119.0 327.1	WORCESTER TOWER ★ 120.5 (CTAF) 263.0	GND CON 123.85	CLNC DEL 128.65	CLNC DEL 119.0 (When twr closed)	UNICOM 122.95
-----------------------	---------------------------------------	--	--------------------------	---------------------------	---	-------------------------

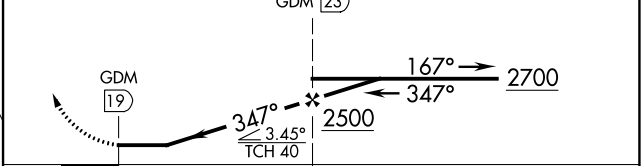


ELEV 1009	D	TDZE 998
-----------	----------	----------



TDZ/CL Rwy 11
REIL Rwys 15, 29 and 33
HIRL Rwy 11-29
MIRL Rwy 15-33

3000 hdg 240°	GDM R-191	GRAYM △	VGSI and descent angles not coincident (VGSI Angle 3.00/TCH 40).	One Minute Holding Pattern
---------------------	--------------	------------	---	-------------------------------



CATEGORY	A	B	C	D
S-33	1520-1	522 (600-1)	1520-1½	522 (600-1½)
C CIRCLING	1560-1 551 (600-1)	1720-1 711 (800-1)	2000-3	991 (1000-3)

NE-1, 31 OCT 2024 to 28 NOV 2024

NE-1, 31 OCT 2024 to 28 NOV 2024