

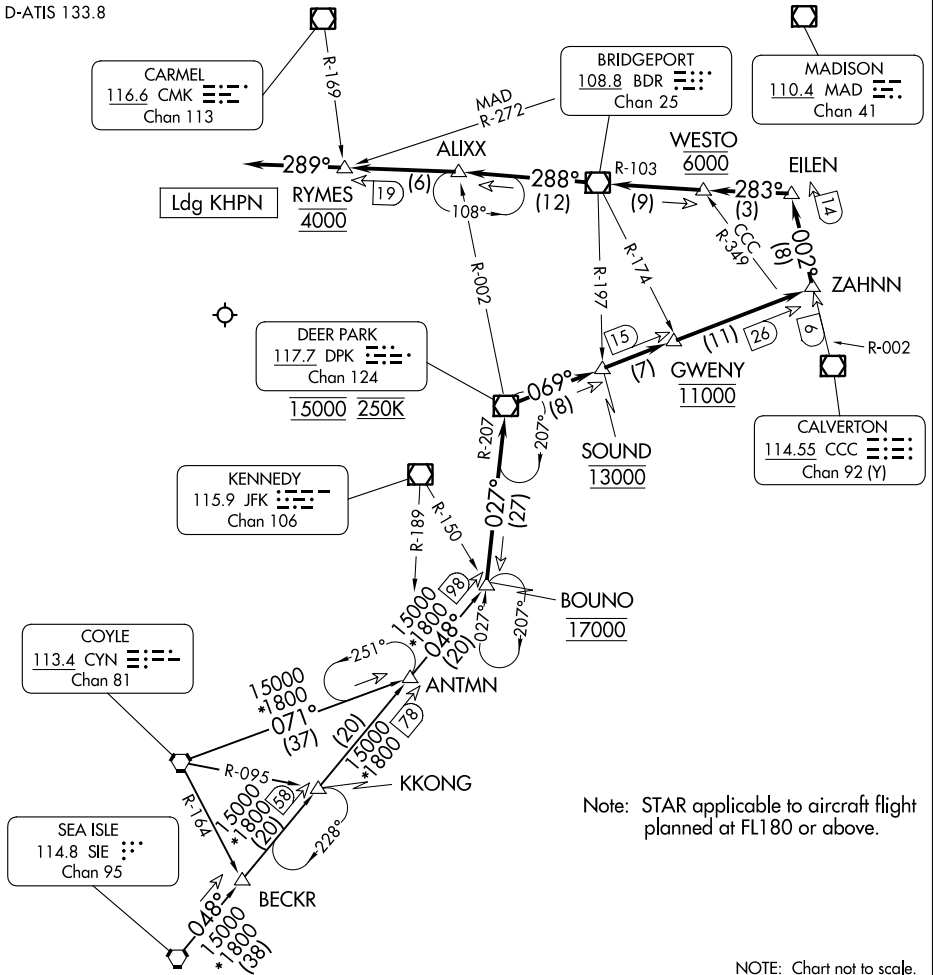
(BOUNO.BOUNO5) 23334  
**BOUNO FIVE ARRIVAL**

AL-651 (FAA)

WESTCHESTER COUNTY (HPN)  
 WHITE PLAINS, NEW YORK

NEW YORK APP CON  
 124.075 133.1 343.75  
 D-ATIS 133.8

RADAR required.



NE-2, 05 SEP 2024 to 03 OCT 2024

NE-2, 05 SEP 2024 to 03 OCT 2024

**ARRIVAL ROUTE DESCRIPTION**

**COYLE TRANSITION (CYN.BOUNO5):** From over CYN VORTAC on CYN R-071 to ANTMTN, then on SIE R-048 to BOUNO. Thence . . . .

**SEA ISLE TRANSITION (SIE.BOUNO5):** From over SIE VORTAC on SIE R-048 to BOUNO. Thence . . . .

. . . . from BOUNO on DPK VOR/DME R-207 to cross DPK at 15000 and at 250K, then on DPK R-069 to cross SOUND at 13000, then on DPK R-069 to cross GWENY at 11000, then on DPK R-069 to ZAHNN, then on CCC VOR/DME R-002 to EILEN, then on BDR VOR/DME R-103 to cross WESTO at 6000, then BDR R-103 to BDR, then on BDR R-288 to ALIXX, then on BDR R-288 to cross RYMES at 4000, then on heading 289°. Expect radar vectors to final approach course.

NOTE: Chart not to scale.

**BOUNO FIVE ARRIVAL**  
 (BOUNO.BOUNO5) 30NOV23

WHITE PLAINS, NEW YORK  
 WESTCHESTER COUNTY (HPN)