

WAAS CH 58240 W21A	APP CRS 213°	Rwy Idg TDZE 1194 Apt Elev 1194	5002
----------------------------------------	------------------------	-----------------------------------------------------	-------------

RNAV (GPS) RWY 21

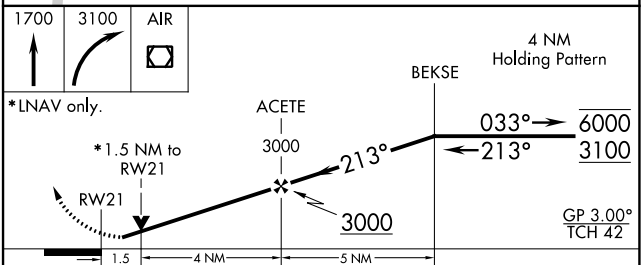
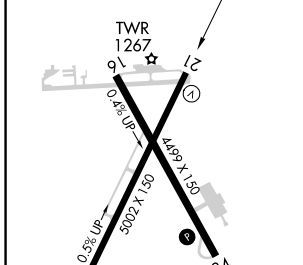
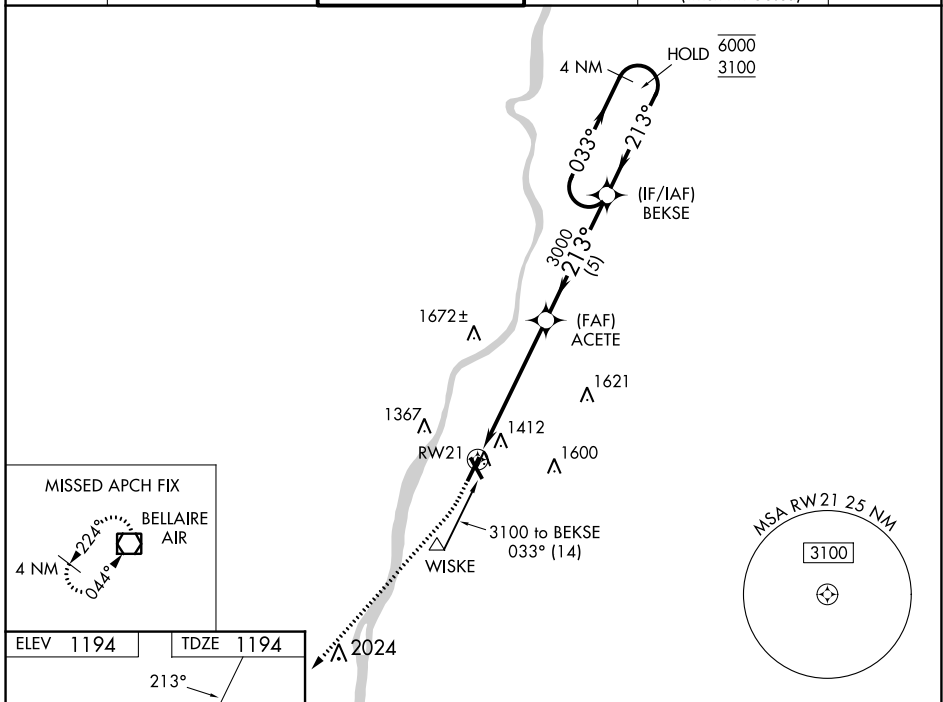
WHEELING OHIO COUNTY (H.L.G.)

RNP APCH.

▼ Rwy 21 helicopter visibility reduction below 3/4 SM NA. For uncompensated Baro-VNAV systems, procedure NA below -17°C or above 54°C.

MISSED APPROACH: Climb to 1700 then climbing right turn to 3100 direct AIR VOR/DME and hold.

ASOS 127.375	PITTSBURGH APP CON 125.275 285.575	WHEELING TOWER * 118.1 (CTAF) 0257.8	GND CON 121.75	CLNC DEL 125.275 (when twr closed)	UNICOM 122.95
------------------------	----------------------------------------------	------------------------------------------------	--------------------------	-------------------------------------------------	-------------------------



ELEV 1194	TDZE 1194						
<table border="1"> <tr> <td>1700</td> <td>3100</td> <td>AIR</td> </tr> </table>		1700	3100	AIR	4 NM Holding Pattern		
1700	3100	AIR					
* LNAV only.		ACETE 3000					
* 1.5 NM to RW21		BEKSE 3100					
RW21		GP 3.00° TCH 42'					
CATEGORY	A	B	C	D			
LPV DA		1444/50	250 (300-1)				
LNAV/VNAV DA		1653-1 3/8	459 (500-1 3/8)				
LNAV MDA	1700/55	506 (600-1)	1700-1 3/8	506 (600-1 3/8)			
C CIRCLING	1720-1 526 (600-1)	1740-1 546 (600-1)	1920-2 726 (800-2)	1920-2 1/4 726 (800-2 1/4)			

NE-4, 03 OCT 2024 to 31 OCT 2024

NE-4, 03 OCT 2024 to 31 OCT 2024