

VORTAC PLN	APP CRS	Rwy Idg	<b>5395</b>
<b>111.8</b>	<b>245°</b>	TDZE	<b>721</b>
Chan <b>55</b>		Apt Elev	<b>721</b>

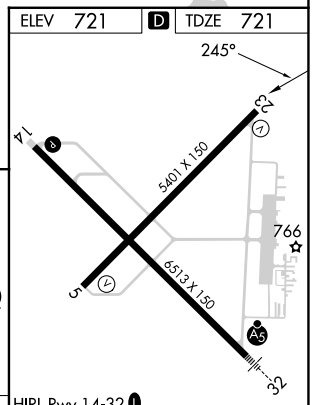
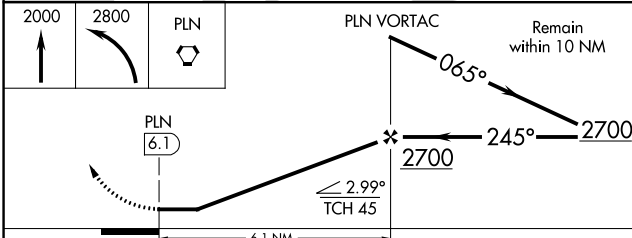
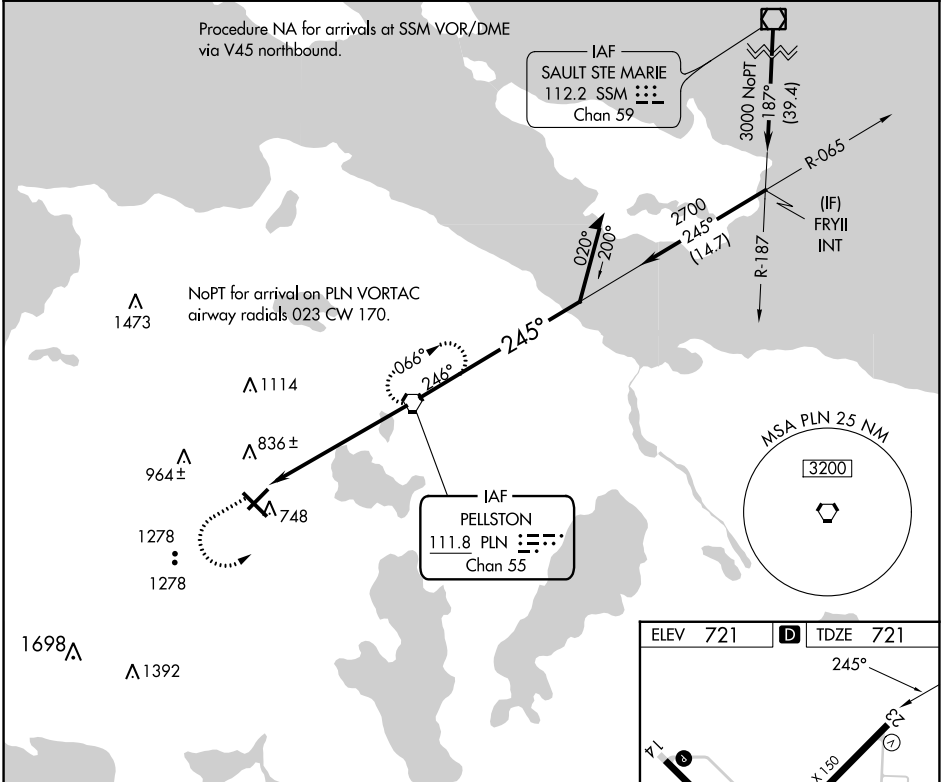
# VOR RWY 23

PELLSTON RGNL/EMMET COUNTY (PLN)

**⚠** When local altimeter setting not received, use Harbor Springs altimeter setting: increase all MDA 40 feet and visibility S-23 Cat C and D ¼ SM.  
**⚠** Rwy 23 helicopter visibility reduction below 1 SM NA.  
 Straight-in Rwy 23 NA at night, Circling Rwy 5, 14, 23 NA at night.

MISSED APPROACH: Climb to 2000 then climbing left turn to 2800 direct PLN VORTAC and hold.

ASOS <b>119.025</b>	MINNEAPOLIS CENTER <b>134.6 354.05</b>	UNICOM <b>123.0 (CTAF) 0</b>
------------------------	---	---------------------------------



CATEGORY	A	B	C	D
S-23	1300-1	579 (600-1)	1300-1½ 579 (600-1½)	1300-1¾ 579 (600-1¾)
CIRCLING	1300-1 579 (600-1)	1320-1 599 (600-1)	1560-2½ 839 (900-2½)	1660-3 939 (1000-3)

HIRL Rwy 14-32	<b>0</b>
MIRL Rwy 5-23	<b>0</b>
REL Rwys 5, 14, and 23	<b>0</b>
FAF to MAP 6.1 NM	
Knots	60 90 120 150 180
Min:Sec	6:06 4:04 3:03 2:26 2:02

# VOR RWY 23

EC-1, 31 OCT 2024 to 28 NOV 2024

EC-1, 31 OCT 2024 to 28 NOV 2024