


|                           |                        |                             |   |
|---------------------------|------------------------|-----------------------------|---|
| LOC I-PKB<br><b>110.7</b> | APP CRS<br><b>027°</b> | Rwy Idg<br>TDZE<br>Apt Elev | <b>6780</b><br><b>830</b><br><b>859</b> |
|---------------------------|------------------------|-----------------------------|---|

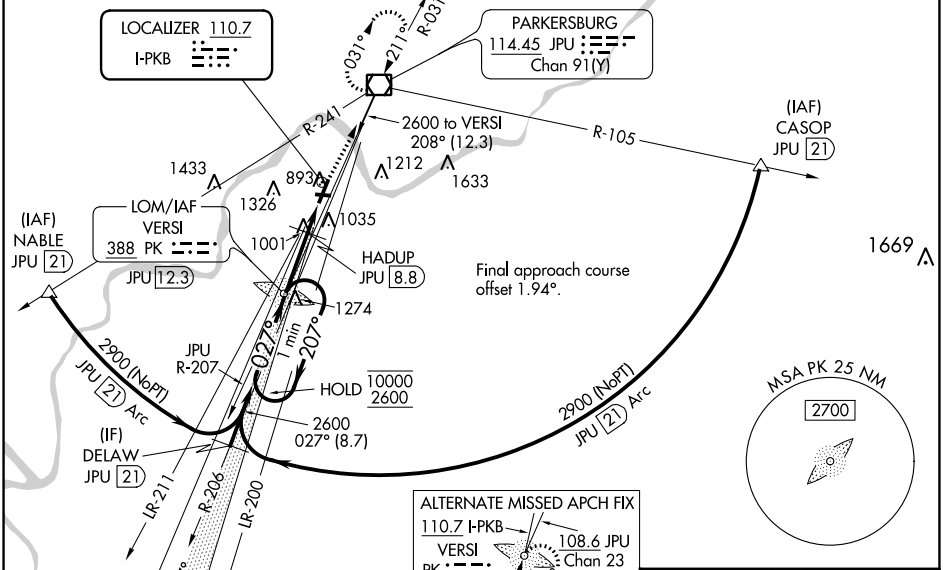
**ILS or LOC RWY 3**  
MID-OHIO VALLEY RGNL (PKB)

**NA** Circling Rwy 10, 28 NA at night. Rwy 3 helicopter visibility reduction below RVR 4000 NA. When local altimeter setting not received, use Athens/Albany altimeter setting: increase DA to 1301 feet and visibility all Cats ¼ SM; increase all MDAs 100 feet and visibility Cats C and D ½ SM. For inop ALS, increase S-LOC 3 Cat A/B and S-LOC 3 HADUP fix minimums (DME required) Cat A/B visibility to RVR 5500. For inop ALS when using Athens/Albany altimeter setting, increase S-ILS 3 all Cats visibility to 1½ SM and S-LOC 3 all Cats and S-LOC 3 HADUP fix minimums (DME required) Cat A/B visibility to RVR 5500.

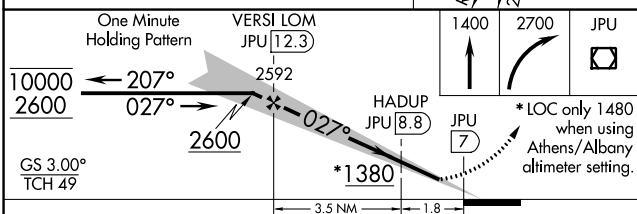
**MALSR** 

**MISSED APPROACH:** Climb to 1400 then climbing right turn to 2700 direct JPU VOR/DME and hold.

|                       |  |   |                          |                         |
|-----------------------|--|---|--------------------------|-------------------------|
| ATIS<br><b>124.35</b> | INDIANAPOLIS CENTER<br><b>125.55 317.475</b> | <b>PARKERSBURG TOWER *</b><br><b>123.7 (CTAF) 257.8</b> | GND CON<br><b>126.45</b> | UNICOM<br><b>122.95</b> |
|-----------------------|--|---|--------------------------|-------------------------|



|                          |                   |
|--------------------------|-------------------|
| ELEV 859                 | <b>D</b> TDZE 830 |
| HIRL Rwys 3-21 and 10-28 |                   |
| REIL Rwy 10, 21          |                   |
| REIL Rwy 28              |                   |



**LOC RWY 3**

**TWR 918**

**7240 X 150**

**4002**

**28**

**027°**

|                   |      |      |      |      |      |
|-------------------|------|------|------|------|------|
| FAF to MAP 5.3 NM |      |      |      |      |      |
| Knots             | 60   | 90   | 120  | 150  | 180  |
| Min:Sec           | 5:18 | 3:32 | 2:39 | 2:07 | 1:46 |

| CATEGORY                          | A                     | B                     | C                       | D                       |
|-----------------------------------|-----------------------|-----------------------|-------------------------|-------------------------|
| S-ILS 3                           | 1201/40 371 (400-¾)   |                       |                         |                         |
| S-LOC 3                           | 1380/40               | 550 (600-¾)           | 1380/60                 | 550 (600-1¼)            |
| CIRCLING                          | 1380-1                | 521 (600-1)           | 781 (800-2¼)            | 781 (800-2½)            |
| HADUP FIX MINIMUMS (DME REQUIRED) |                       |                       |                         |                         |
| S-LOC 3                           | 1260/40 430 (500-¾)   |                       |                         |                         |
| CIRCLING                          | 1320-1<br>461 (500-1) | 1380-1<br>521 (600-1) | 1640-2¼<br>781 (800-2¼) | 1640-2½<br>781 (800-2½) |

NE-4, 08 AUG 2024 to 05 SEP 2024

NE-4, 08 AUG 2024 to 05 SEP 2024