

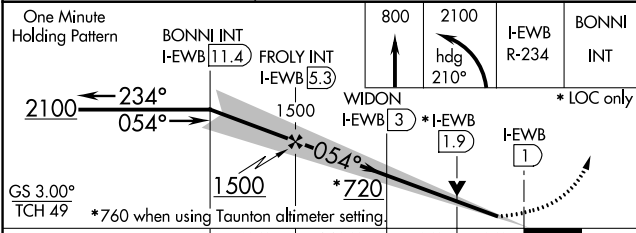
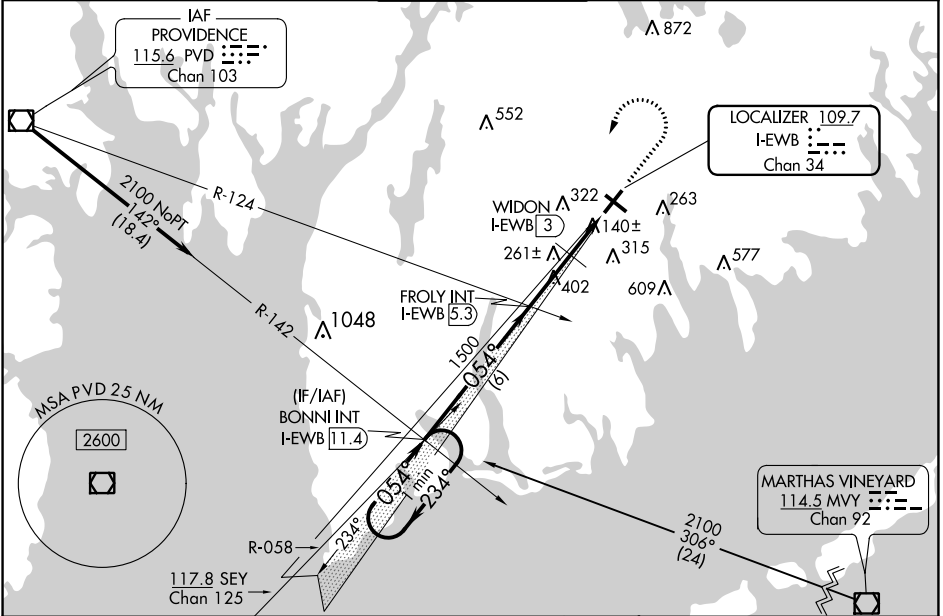
LOC/DME I-EWB <b>109.7</b> Chan 34	APP CRS <b>054°</b>	Rwy Idg TDZE Apt Elev	<b>5400</b> <b>70</b> <b>79</b>
--	------------------------	-----------------------------	---------------------------------------

**ILS or LOC RWY 5**  
NEW BEDFORD RGNL (E-WB)

**⚠** AutoPilot coupled approach NA below 470. DME required. VDP NA with Taunton altimeter setting. When local altimeter setting not received, use Taunton altimeter setting and increase all DA 34 feet and all MDA 40 feet; increase S-LOC 5 Cats C and D and Circling Cat C visibility 1/8 SM; increase WIDON fix minimums Circling Cat C visibility 1/4 SM. For inop MALSRL, increase WIDON fix minimums S-LOC 5 Cat C/D visibility 1/4 mile. #RVR 1800 authorized with use of FD or AP or HUD to DA.

**MALSRL**  
MISSED APPROACH: Climb to 800 then climbing left turn to 2100 on heading 210° and on I-EWB localizer SW course R-234 to BONNI INT/I-EWB 11.4 DME and hold.

ATIS <b>126.85</b>	PROVIDENCE APP CON* <b>128.7 269.525</b>	NEW BEDFORD TOWER* <b>118.1 (CTAF) 239.0</b>	GND CON <b>121.9</b>	UNICOM <b>122.95</b>
-----------------------	---	---	-------------------------	-------------------------



ELEV 79	TDZE 70
MIRL Rwy 14-32	HIRL Rwy 5-23
REIL Rwy 32	
FAF to MAP 4.4 NM	
Knots	60 90 120 150 180
Min:Sec	4:24 2:56 2:12 1:46 1:28

CATEGORY	A	B	C	D
S-ILS 5 #	270/24 200 (200-1/2)			
S-LOC 5	720/24	650 (700-1/2)	720-1 3/8	650 (700-1 3/8)
<b>C</b> CIRCLING	720-1	641 (700-1)	720-1 7/8 641 (700-1 7/8)	960-3 881 (900-3)
WIDON FIX MINIMUMS				
S-LOC 5	420/24	350 (400-1/2)	420/30	350 (400-5/8)
<b>C</b> CIRCLING	600-1 521 (600-1)	640-1 561 (600-1)	720-1 3/4 641 (700-1 3/4)	960-3 881 (900-3)

NE-1, 31 OCT 2024 to 28 NOV 2024

NE-1, 31 OCT 2024 to 28 NOV 2024