

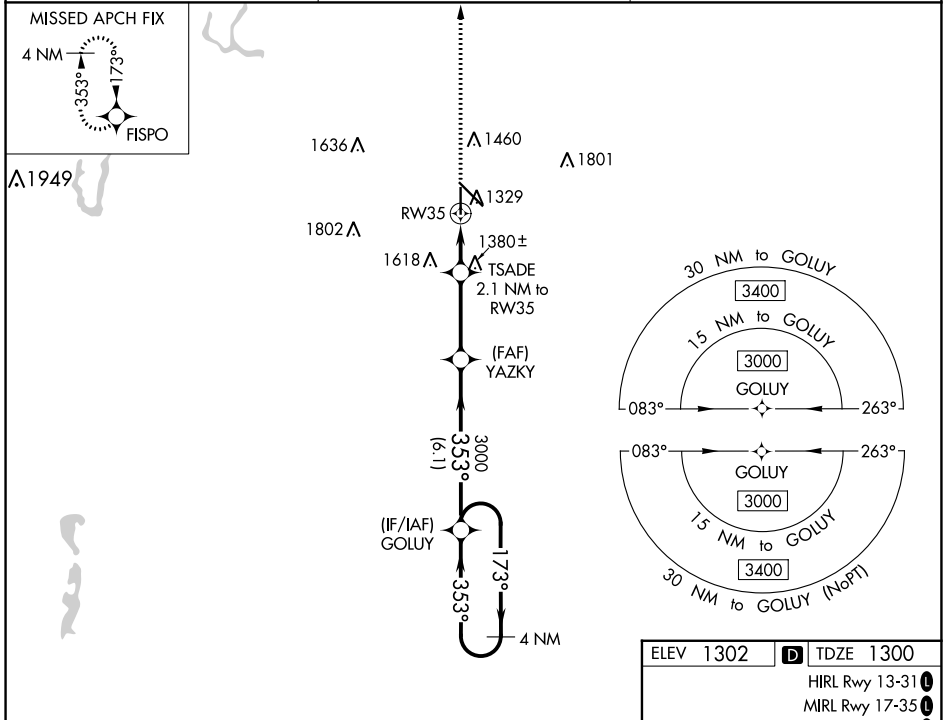
WAAS CH <b>65800</b> <b>W35A</b>	APP CRS <b>353°</b>	Rwy ldg TDZE Apt Elev	<b>5500</b> <b>1300</b> <b>1302</b>
--	------------------------	-----------------------------	---

# RNAV (GPS) RWY 35

ABERDEEN RGNL (ABR)

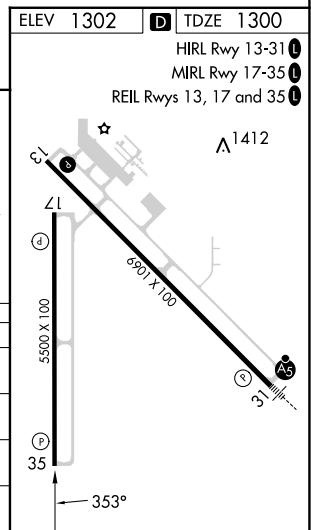
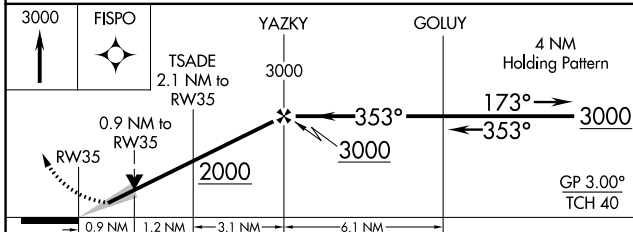
RNP APCH - GPS.	MISSED APPROACH: Climb to 3000 direct FISPO and hold.
▼ For uncompensated Baro-VNAV systems, LNAV/VNAV	
▲ NA below -22°C or above 54°C.	

ASOS <b>125.875</b>	MINNEAPOLIS CENTER <b>120.6 371.9</b>	UNICOM <b>122.7 (CTAF)</b>
------------------------	--	-------------------------------



NC-1, 08 AUG 2024 to 05 SEP 2024

NC-1, 08 AUG 2024 to 05 SEP 2024



CATEGORY	A	B	C	D
LPV DA		1500-3/4	200 (200-3/4)	
LNAV/VNAV DA		1550-7/8	250 (300-7/8)	
LNAV MDA	1640-1	340 (400-1)	1640-7/8	340 (400-7/8)
CIRCLING	1760-1 458 (500-1)	1860-1 558 (600-1)	1960-1 3/4 658 (700-1 3/4)	2160-2 3/4 858 (900-2 3/4)