

(ZARLO2.ZARLO) 21112

# ZARLO TWO DEPARTURE (RNAV)

AL-641 (FAA)

PANGBORN MEML (EAT)  
WENATCHEE, WASHINGTON

NW-1, 31 OCT 2024 to 28 NOV 2024

## DEPARTURE ROUTE DESCRIPTION

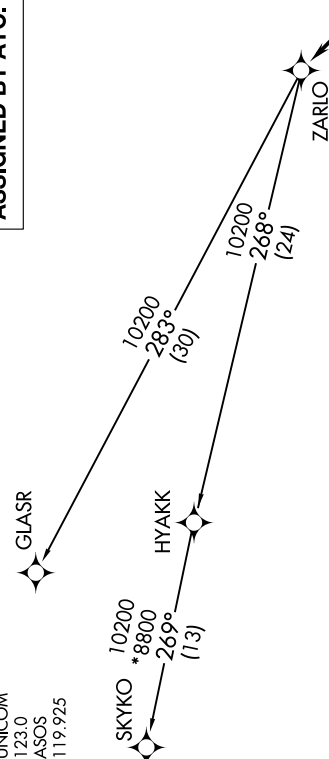
**TAKEOFF RUNWAY 12:** Climb heading 120° to 3700, then left turn direct PREBE, thence . . .  
**TAKEOFF RUNWAY 30:** Climb heading 300° to 1750, then direct PREBE, thence . . .

. . . on track 300° to cross UBIYO at or above 6700, then on depicted route to ZARLO, then on transition. Expect filed altitude 10 minutes after departure.

GLASR TRANSITION [ZARLO2.GLASR]  
SKYKO TRANSITION [ZARLO2.SKYKO]

## TOP ALTITUDE: ASSIGNED BY ATC.

SEATTLE CENTER  
126.1  
UNICOM  
123.0  
ASOS  
119.925



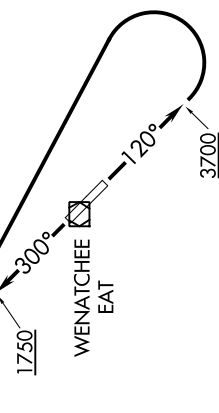
ZARLO

VECUS  
300°  
(3)

UBIYO  
6700  
300°  
(5)

**TAKEOFF MINIMUMS**  
Rwy 12: Standard with minimum climb of 650' per NM to 3300.  
Rwy 30: Standard with minimum climb of 465' per NM to 6200.

**NOTE:** RNAV 1.  
**NOTE:** GPS required.  
**NOTE:** Departures may be restricted to cross UBIYO at or below 11000.



WENATCHEE  
EAT

3700

# ZARLO TWO DEPARTURE (RNAV)

(ZARLO2.ZARLO) 10NOV16

PANGBORN MEML (EAT)  
WENATCHEE, WASHINGTON

NOTE: Chart not to scale.

NW-1, 31 OCT 2024 to 28 NOV 2024