

VOR/DME EAT <b>114.35</b> Chan <b>90(Y)</b>	APP CRS <b>289°</b>	Rwy Idg TDZE Apt Elev <b>N/A</b> <b>N/A</b> <b>1249</b>
---	------------------------	---

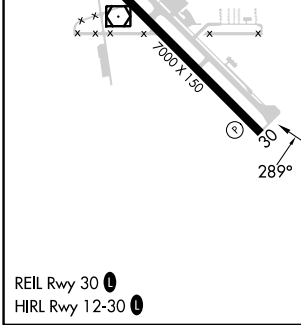
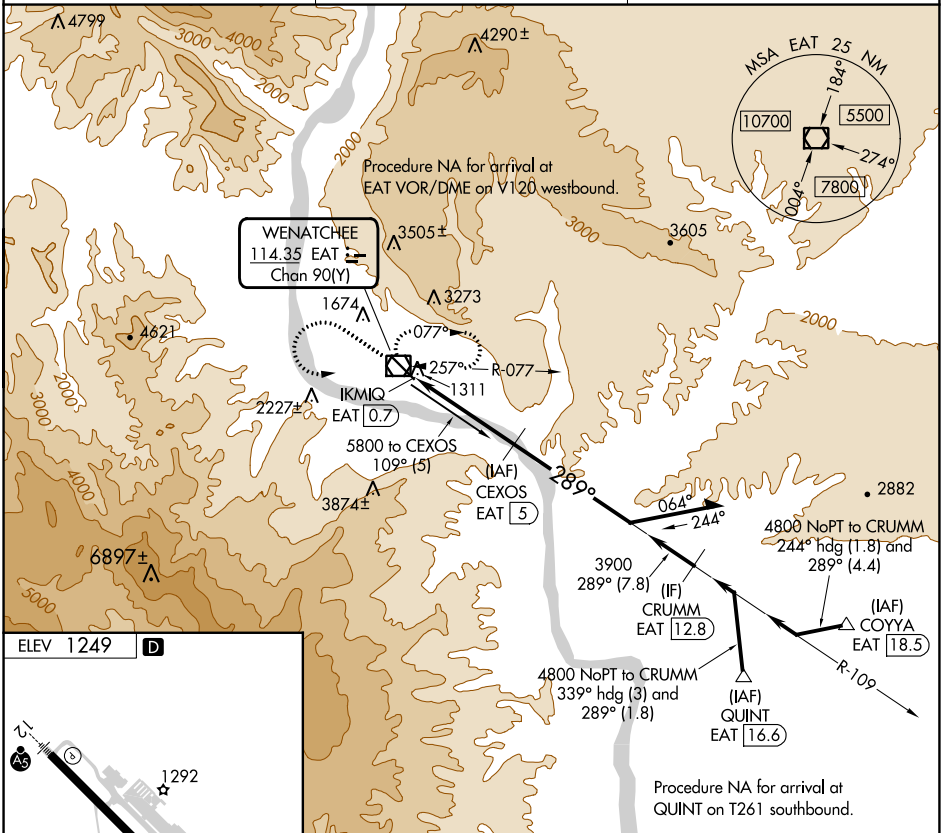
# VOR-A

PANGBORN MEML (EAT)

**DME required.**  
Circling NA northeast of Rwy 12-30.

**MISSED APPROACH:** Climb to 3900 then climbing left turn to 6000 direct EAT VOR/DME and hold, continue climb-in-hold to 6000.

ASOS <b>119.925</b>	SEATTLE CENTER <b>126.1</b>	UNICOM <b>123.0 (CTAF)</b>
------------------------	--------------------------------	-------------------------------



3900 6000 EAT

5200 4800 3900

109° 289°

Remain within 10 NM

EAT VOR/DME IKMIQ EAT 0.7

0.1 4.3 NM

CATEGORY	A	B	C	D
<b>CIRCLING</b>	3180-1¼ 1931 (2000-1¼)	3180-1½ 1931 (2000-1½)	3200-3 1951 (2000-3)	3900-3 2651 (2700-3)

NW-1, 31 OCT 2024 to 28 NOV 2024

NW-1, 31 OCT 2024 to 28 NOV 2024