

APP CRS 300°	Rwy Idg 7000
	TDZE 1232
	Apt Elev 1249

RNAV (RNP) Z RWY 30

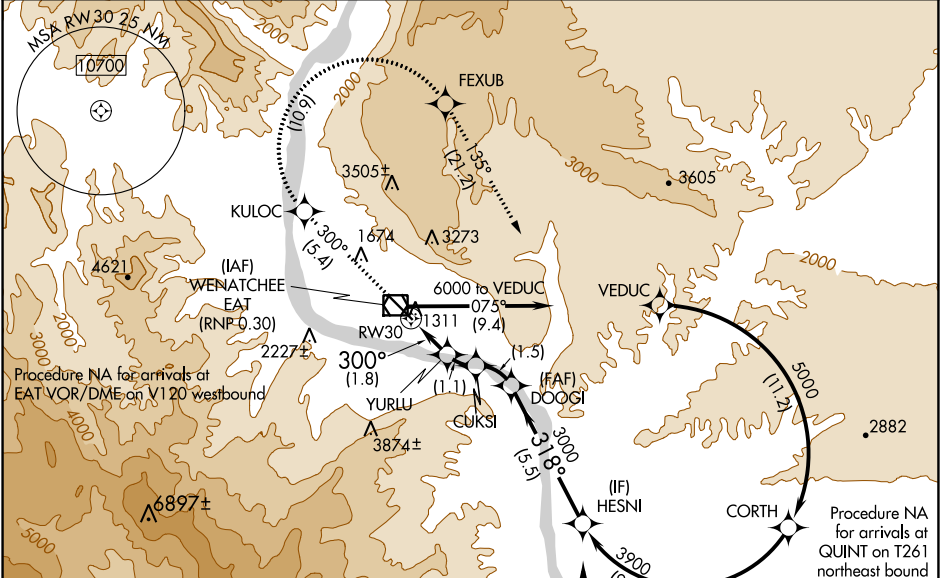
PANGBORN MEML (EAT)

▽ -7°C For uncompensated Baro-VNAV systems, procedure NA below -10°C (14°F) or above 44°C (111°F). RF required. GPS required. FD or HUD required.

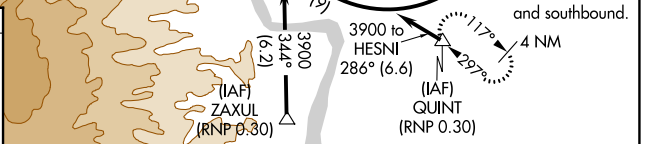
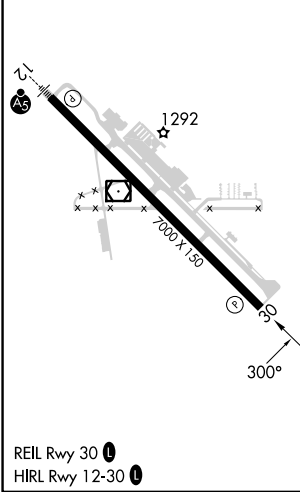
MISSED APPROACH: Climb to 6000 on track 300° to KULOC, right turn to FEXUB, and on track 135° to QUINT and hold.

* Missed approach requires minimum climb of 320 feet per NM to 5500.
Missed approach requires minimum climb of 325 feet per NM to 5500.

ASOS 119.925	SEATTLE CENTER 126.1	UNICOM 123.0 (CTAF) 0
------------------------	--------------------------------	---------------------------------



ELEV 1249	D	TDZE 1232
-----------	----------	-----------



6000	KULOC	FEXUB	tr 135°	QUINT	HESNI
tr 300°					
VGSi and RNAV glidepath not coincident (VGSi Angle 4.30/TCH 46)					DOOGI
RW30	YURLU	CUKSI	3000	3000	3900
	1979	2411			
			318°		
			3000		
					GP 3.60° TCH 60
	1.8 NM	1.1 NM	1.5 NM	5.5 NM	

CATEGORY	A	B	C	D
RNP 0.17 DA*		1595-1	363 (400-1)	NA
RNP 0.30 DA#		1686-1 3/8	454 (500-1 3/8)	NA

AUTHORIZATION REQUIRED

NW-1, 31 OCT 2024 to 28 NOV 2024

NW-1, 31 OCT 2024 to 28 NOV 2024