


VOR/DME SRQ <b>117.0</b> Chan <b>117</b>	APP CRS <b>118°</b>	Rwy Idg <b>7540</b> TDZE <b>23</b> Apt Elev <b>30</b>
--	------------------------	---

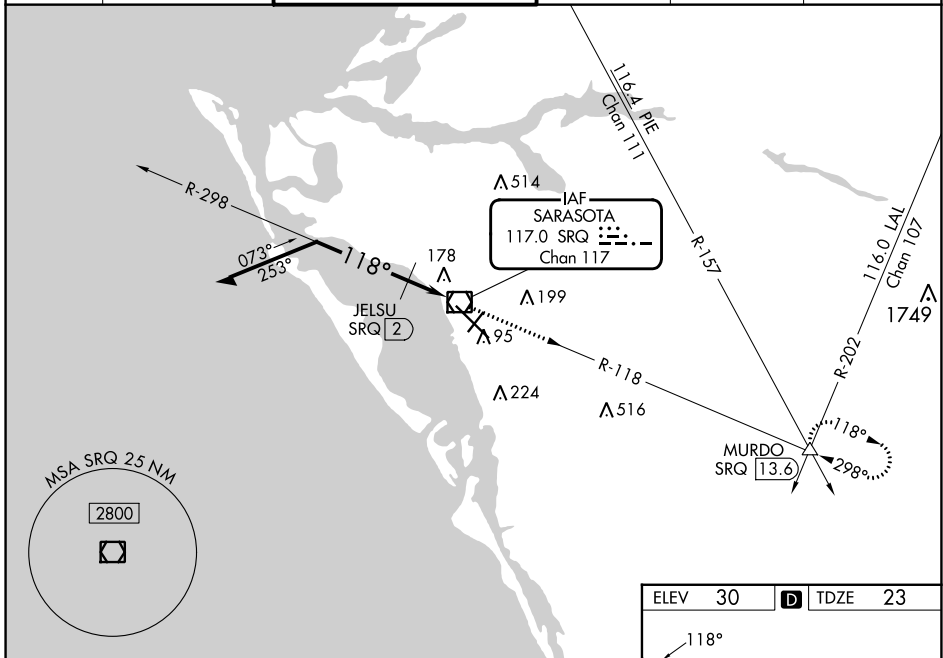
**VOR RWY 14**  
SARASOTA/BRADENTON INTL (SRQ)

▼ For inop ALS, increase S-14 Cats C/D visibility to 1½ SM, increase JELSU Fix Minimums S-14 Cats C/D visibility to 1½ SM. When control tower closed, increase S-14 Cats A/B and JELSU Fix Minimums S-14 all Cats visibility to 1 SM. When control tower closed, inop table does not apply to S-14 and JELSU Fix Minimums S-14 Cats A/B. When control tower closed, for inop ALS, increase S-14 Cats C/D visibility to 1½ SM, increase JELSU Fix Minimums Cats C/D visibility to 1½ SM.

MALSR 

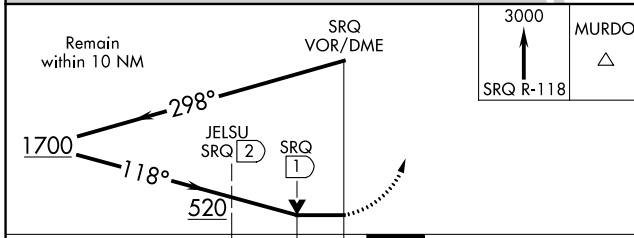
MISSED APPROACH:  
Climb to 3000 on SRQ  
VOR/DME R-118 to  
MURDO INT/SRQ 13.6  
DME and hold.

ATIS <b>124.375</b>	TAMPA APP CON <b>119.65 353.575</b>	SARASOTA TOWER* <b>120.1 (CTAF) 0 256.8</b>	GND CON <b>121.9 273.6</b>	CLNC DEL <b>118.25</b>	UNICOM <b>122.95</b>
------------------------	--	--	-------------------------------	---------------------------	-------------------------





SE-3, 05 SEP 2024 to 03 OCT 2024

SE-3, 05 SEP 2024 to 03 OCT 2024



ELEV 30	<b>D</b> TDZE 23
---------	------------------

REIL Rwy 22 

HIRL Rwys 14-32 and 4-22 

CATEGORY	A	B	C	D
S-14	520-½	497 (500-½)	520-1	497 (500-1)
CIRCLING	520-1	490 (500-1)	600-1½ 570 (600-1½)	600-2 570 (600-2)
JELSU FIX MINIMUMS				
S-14	440-½	417 (500-½)	440-¾	417 (500-¾)
CIRCLING	500-1	470 (500-1)	600-1½ 570 (600-1½)	600-2 570 (600-2)