

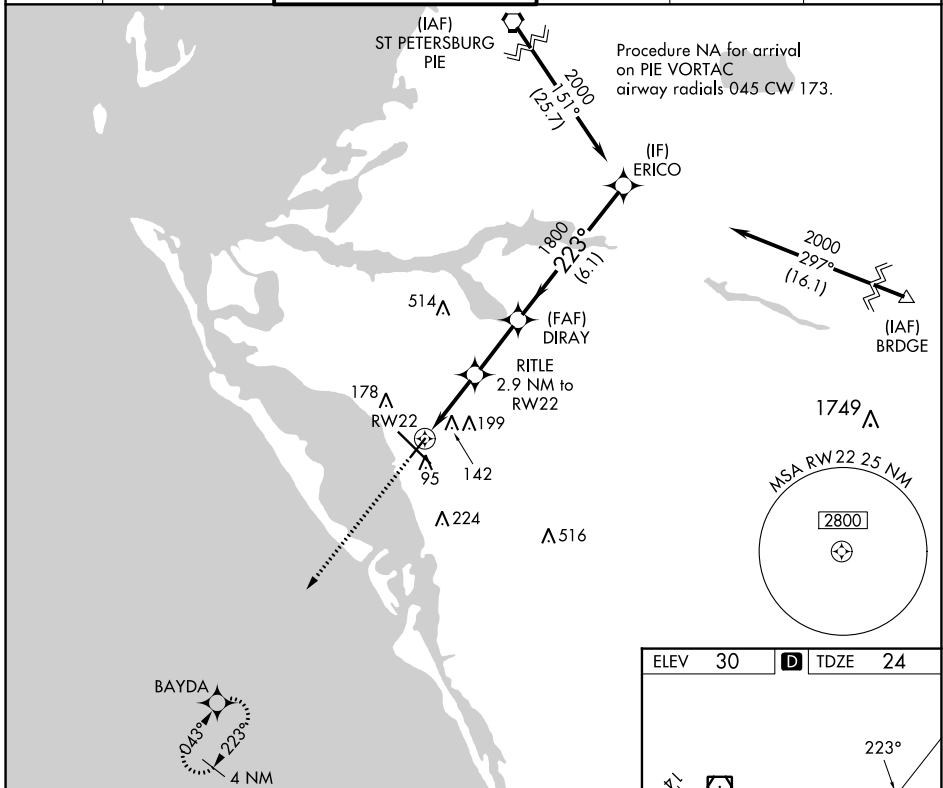
APP CRS	Rwy Idg	5006
223°	TDZE	24
	Apt Elev	30

RNAV (GPS) RWY 22

SARASOTA/BRADENTON INTL (SRQ)

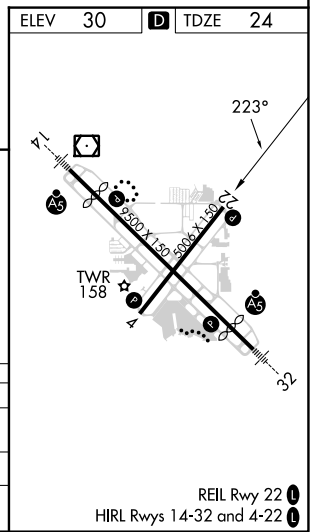
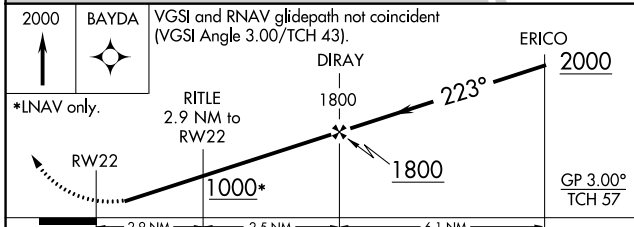
RNP APCH.		MISSED APPROACH: Climb to 2000 direct BAYDA and hold.			
<p>▼ Rwy 22 helicopter visibility reduction below 1 SM NA. For uncompensated Baro-VNAV systems, LNAV/VNAV NA below -15°C or above 43°C.</p>					

ATIS	TAMPA APP CON	SARASOTA TOWER*	GND CON	CLNC DEL	UNICOM
124.375	119.65 353.575	120.1(CTAF) 256.8	121.9 273.6	118.25	122.95



SE-3, 05 SEP 2024 to 03 OCT 2024

SE-3, 05 SEP 2024 to 03 OCT 2024



ELEV	30	TDZE	24
<p>*LNAV only.</p> <p>RWY 22</p> <p>RITLE 2.9 NM to RWY 22</p> <p>DIRAY 1800</p> <p>ERICO 2000</p> <p>GP 3.00° TCH 57</p>			
CATEGORY	A	B	C
LNAV/VNAV DA	303-1 279 (300-1)		
LNAV MDA	400-1 376 (400-1)		
CIRCLING	500-1 470 (500-1)	600-1½ 570 (600-1½)	600-2 570 (600-2)

REIL Rwy 22
HIRL Rws 14-32 and 4-22