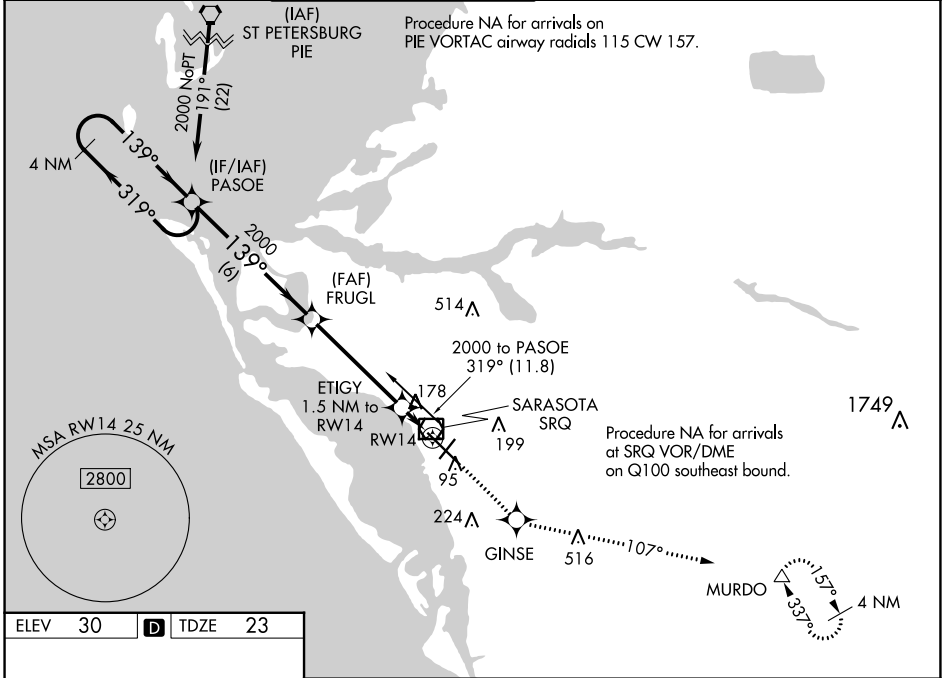


WAAS CH <b>86705</b> <b>W14A</b>	APP CRS <b>139°</b>	Rwy Idg <b>7540</b> TDZE <b>23</b> Apt Elev <b>30</b>
--	------------------------	---

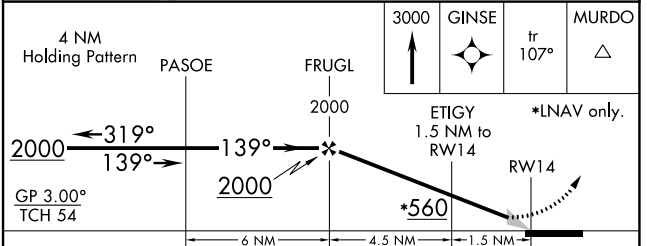
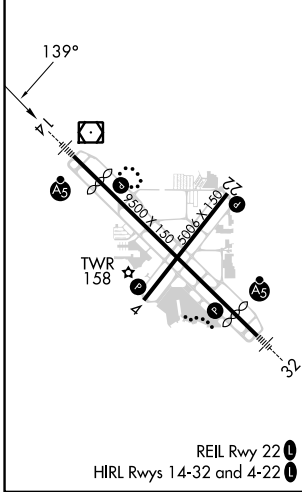
# RNAV (GPS) RWY 14

SARASOTA/BRADENTON INTL (SRQ)

RNP APCH.		MALSR	MISSED APPROACH: Climb to 3000 direct GINSE and on track 107° to MURDO and hold.		
<p>▼ For uncompensated Baro-VNAV systems, LNAV/VNAV NA below -15°C or above 43°C. When control tower closed, LPV and LNAV/VNAV NA; increase LNAV all Cats visibility to 1 mile. When control tower closed, inop table does not apply to LNAV Cats A and B. When control tower closed, for inop MALSR, increase LNAV Cats C and D visibility to 1½ mile.</p>					
ATIS <b>124.375</b>	TAMPA APP CON <b>119.65 353.575</b>	SARASOTA TOWER ★ <b>120.1(CTAF) 0 256.8</b>	GND CON <b>121.9 273.6</b>	CLNC DEL <b>118.25</b>	UNICOM <b>122.95</b>



ELEV 30	<b>D</b>	TDZE 23
---------	----------	---------



CATEGORY	A	B	C	D
LPV DA		223-½	200 (200-½)	
LNAV/VNAV DA		489-1½	466 (500-1½)	
LNAV MDA	440-½	417 (500-½)	440-¾	417 (500-¾)
CIRCLING	500-1	470 (500-1)	600-1½ 570 (600-1½)	600-2 570 (600-2)

SE-3, 05 SEP 2024 to 03 OCT 2024

SE-3, 05 SEP 2024 to 03 OCT 2024