

LOC I-RGO <b>109.5</b>	APP CRS <b>189°</b>	Rwy ldg <b>7000</b>
		TDZE <b>1218</b>
		Apt Elev <b>1226</b>

# ILS or LOC RWY 19

AKRON-CANTON RGNL (CAK)

**∇** \*\* RVR 1800 authorized with the use of FD or AP or HUD to DA. For inoperative ALS, increase CAT C/D visibility to RVR 6000. ZEVLO fix minimums: For inoperative ALS, increase Cat C/D visibility to RVR 5500.

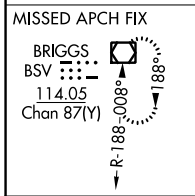
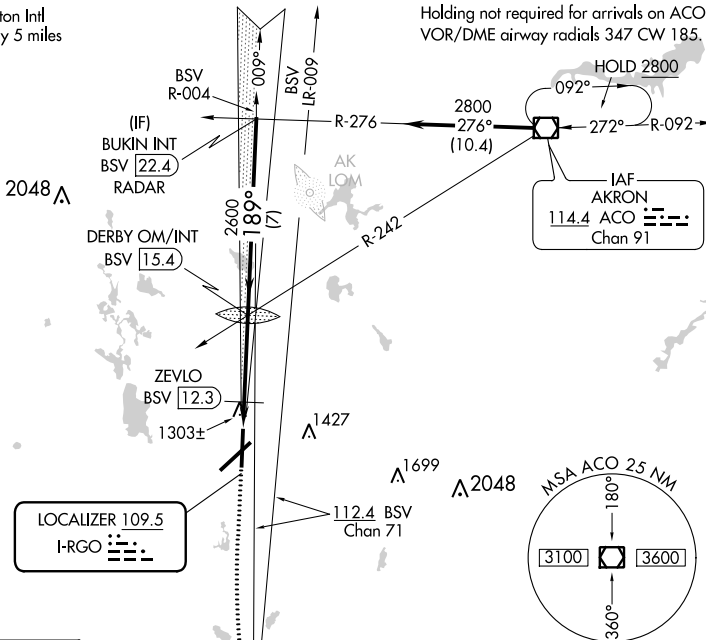


MISSED APPROACH: Climb to 1700 then climbing left turn to 3000 direct BSV VOR/DME and hold.

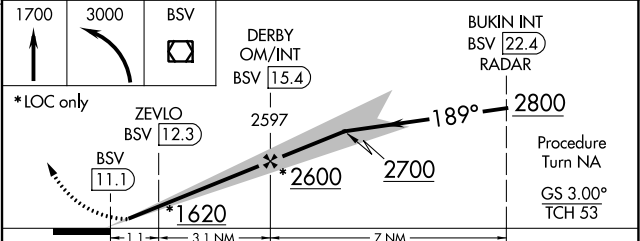
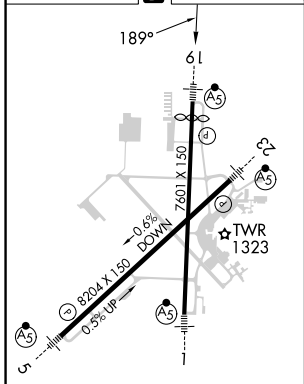
ATIS <b>121.05</b>	CLEVELAND APP CON * <b>125.5 269.25</b>	AKRON-CANTON TOWER <b>134.75 279.575</b>	GND CON <b>121.7 348.6</b>	CLNC DEL <b>132.05</b>
-----------------------	--	---	-------------------------------	---------------------------

CAUTION: OM for Akron Fulton Intl may be received approximately 5 miles north of DERBY OM.

Holding not required for arrivals on ACO VOR/DME airway radials 347 CW 185.



ELEV 1226	<b>D</b>	TDZE 1218
-----------	----------	-----------



CATEGORY	A	B	C	D
S-ILS 19	**1418/24 200 (200-½)			
S-LOC 19	1620/24	402 (400-½)	1620/40	402 (400-¾)
CIRCLING	1760-1	534 (600-1)	1780-1½ 554 (600-1½)	1800-2 574 (600-2)
ZEVLO FIX MINIMUMS				
S-LOC 19	1580/24 362 (400-½)			1580/40 362 (400-¾)
CIRCLING	1760-1	534 (600-1)	1780-1½ 554 (600-1½)	1800-2 574 (600-2)

HIRL Rwy's 1-19 and 5-23

FAF to MAP 4.2 NM					
Knots	60	90	120	150	180
Min:Sec	4:12	2:48	2:06	1:41	1:24