

(NOKXI2.NOKXI) 24137

# NOKXI TWO DEPARTURE (RNAV)

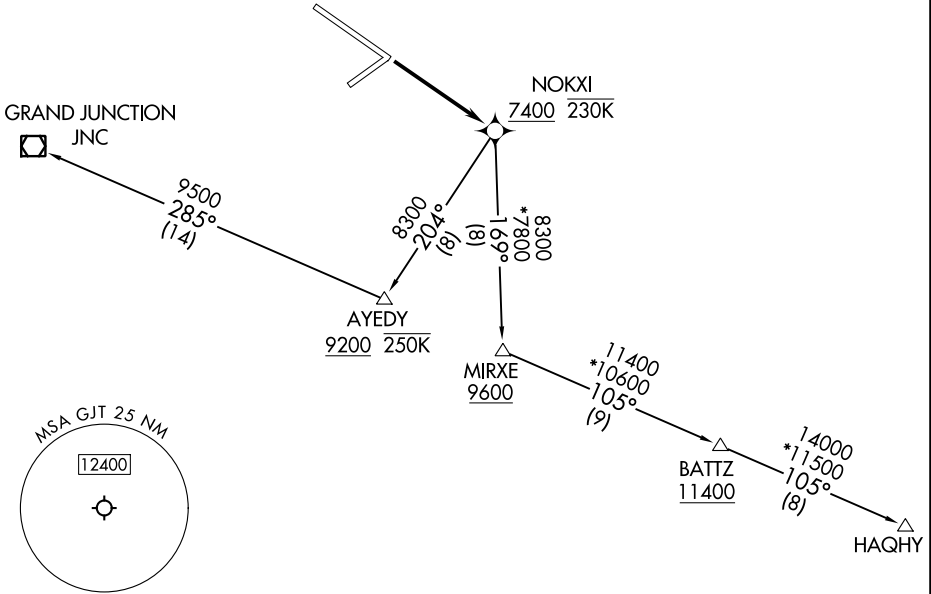
AL-634 (FAA)

GRAND JUNCTION RGNL (GJT)  
GRAND JUNCTION, COLORADO

**TOP ALTITUDE:  
ASSIGNED BY ATC**

RNAV 1 - GPS.

DENVER DEP CON \*  
119.7 317.4  
ATIS  
118.55  
GND CON  
121.7 257.8  
GRAND JUNCTION TOWER \*  
118.1 257.8  
UNICOM  
122.95



SW-1, 31 OCT 2024 to 28 NOV 2024

SW-1, 31 OCT 2024 to 28 NOV 2024

### TAKEOFF MINIMUMS

Rwys 4, 22, 29: NA - Environmental.  
Rwy 11: Standard with minimum climb of 500'/NM to 5361.

NOTE: GRAND JUNCTION Transition: Do not exceed 250K until AYEDY.

NOTE: Chart not to scale.

### DEPARTURE ROUTE DESCRIPTION

TAKEOFF RUNWAY 11: Climb direct NOKXI, thence. . . .

. . . .(transition). Maintain ATC assigned altitude, expect filed altitude 10 minutes after departure.

GRAND JUNCTION TRANSITION (NOKXI2.JNC)

HAQHY TRANSITION (NOKXI2.HAQHY)

**NOKXI TWO DEPARTURE (RNAV)**  
(NOKXI2.NOKXI) 16MAY24

GRAND JUNCTION, COLORADO  
GRAND JUNCTION RGNL (GJT)