

LOC/DME I-ACD <b>109.7</b> Chan 34	APP CRS <b>316°</b>	Rwy Idg TDZE Apt Elev	<b>9339</b> <b>4861</b> <b>4861</b>
--	------------------------	-----------------------------	---

# LDA RWY 29

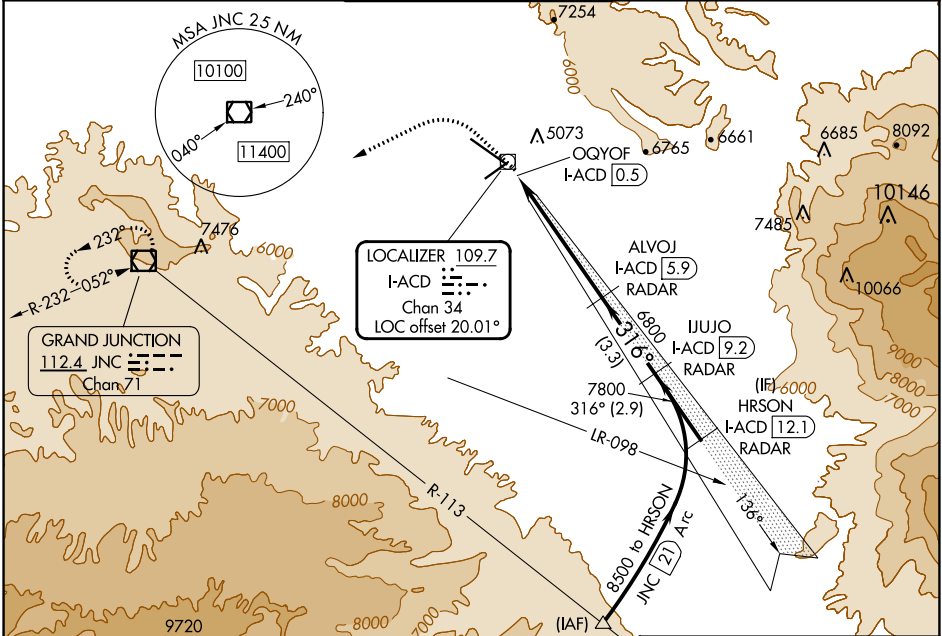
GRAND JUNCTION RGNL (GJT)

DME required.

**▽** Circling NA for Cat D north of Rwy 11-29.  
**▲** Autopilot coupled approach NA inside 2.0 DME.

MISSED APPROACH: Climb to 7500 on heading 304° then climbing left turn direct JNC VOR/DME and hold, continue climb-in-hold to 11000.

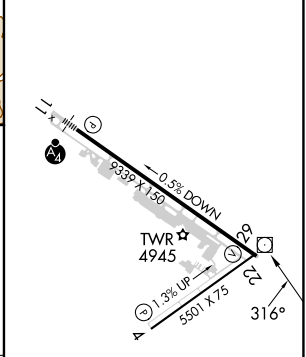
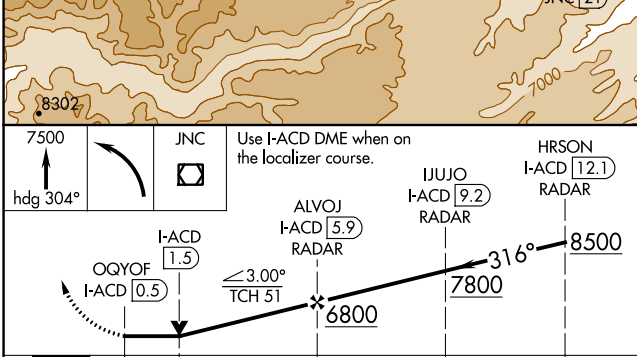
ATIS <b>118.55</b>	DENVER APP CON * <b>119.7 317.4</b>	GRAND JUNCTION TOWER * <b>118.1 (CTAF) 257.8</b>	GND CON <b>121.7 257.8</b>	UNICOM <b>122.95</b>
-----------------------	--	---	-------------------------------	-------------------------



SW-1, 31 OCT 2024 to 28 NOV 2024

SW-1, 31 OCT 2024 to 28 NOV 2024

ELEV 4861	<b>D</b> TDZE 4861
-----------	--------------------



CATEGORY	A	B	C	D
S-29	5400-1	539 (600-1)	5400-1½	539 (600-1½)
CIRCLING	5400-1 539 (600-1)	5520-1 659 (700-1)	5840-3	979 (1000-3)

HIRL Rwy 11-29 **●**  
 MIRL Rwy 4-22  
 REIL Rws 4, 22 and 29