

GRAND JUNCTION EIGHT DEPARTURE

DENVER DEP CON ★
119.7 317.4
ATIS
118.55
GND CON
121.7 257.8
GRAND JUNCTION TOWER ★
118.1 257.8

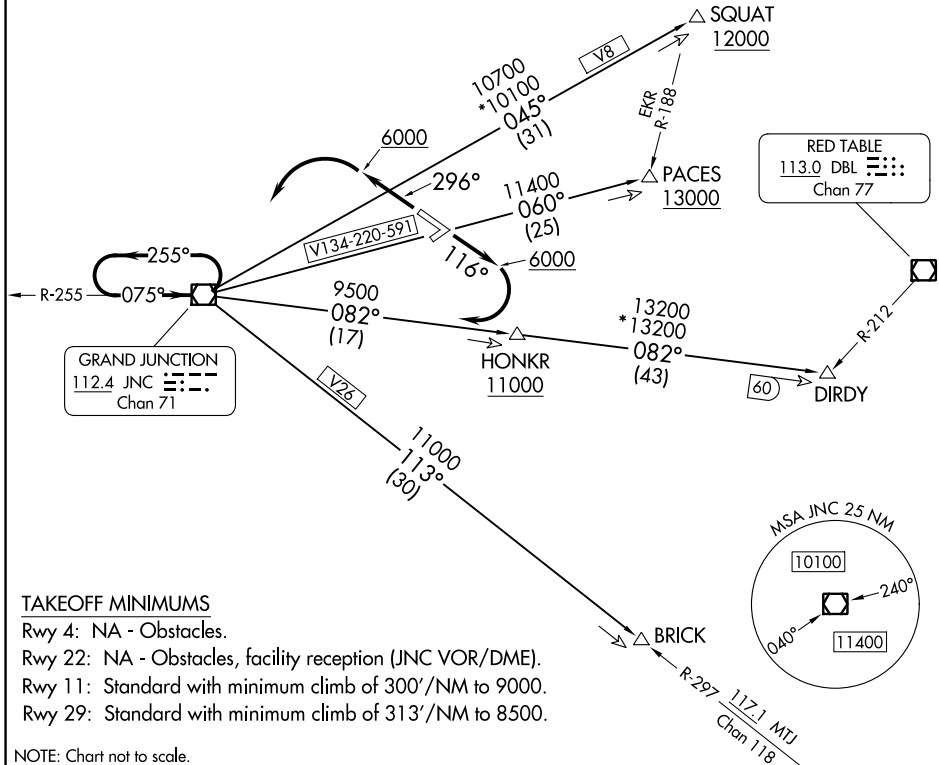
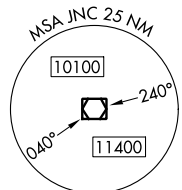
BRICK and DIRDY Transition: DME required.

TOP ALTITUDE:
6000

MEEKER
115.2 EKR
Chan 99

RED TABLE
113.0 DBL
Chan 77

GRAND JUNCTION
112.4 JNC
Chan 71



TAKEOFF MINIMUMS

- Rwy 4: NA - Obstacles.
- Rwy 22: NA - Obstacles, facility reception (JNC VOR/DME).
- Rwy 11: Standard with minimum climb of 300'/NM to 9000.
- Rwy 29: Standard with minimum climb of 313'/NM to 8500.

NOTE: Chart not to scale.

DEPARTURE ROUTE DESCRIPTION

TAKEOFF RUNWAY 11: Climb on heading 116° to 6000, then right turn direct JNC VOR/DME, thence. . . .

TAKEOFF RUNWAY 29: Climb on heading 296° to 6000, then left turn direct JNC VOR/DME, thence. . . .

. . . .(transition) maintain 6000, expect filed altitude 10 minutes after departure.

BRICK TRANSITION (JNC8.BRICK): From over JNC VOR/DME on JNC R-113 to BRICK.

DIRDY TRANSITION (JNC8.DIRDY): From over JNC VOR/DME on JNC R-082 to DIRDY.

PACES TRANSITION (JNC8.PACES): From over JNC VOR/DME on JNC R-060 to PACES.

SQUAT TRANSITION (JNC8.SQUAT): From over JNC VOR/DME on JNC R-045 to SQUAT.

SW-1, 31 OCT 2024 to 28 NOV 2024

SW-1, 31 OCT 2024 to 28 NOV 2024