

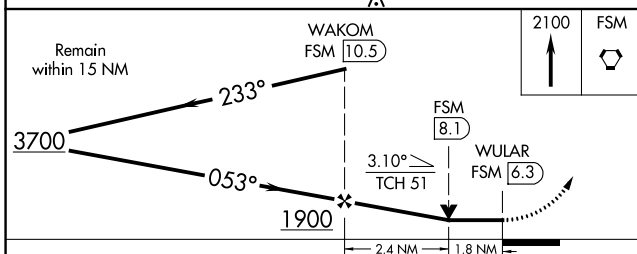
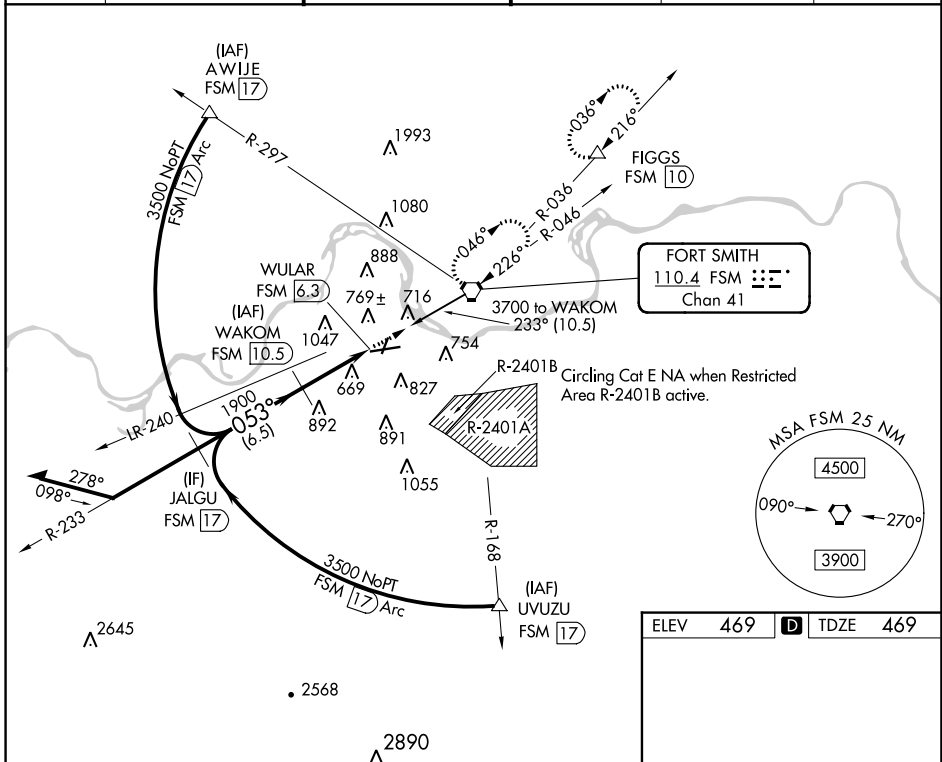
VORTAC FSM <b>110.4</b> Chan <b>41</b>	APP CRS <b>053°</b>	Rwy Idg TDZE <b>469</b> Apt Elev <b>469</b>
--	------------------------	---

# VOR Z or TACAN Z RWY 8

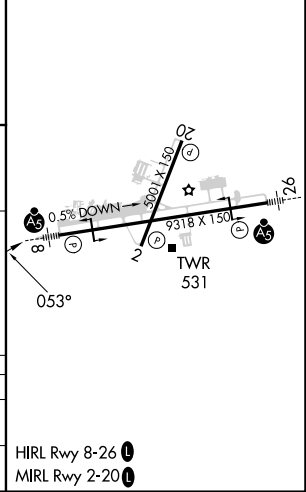
FORT SMITH RGNL (FSM)

DME required.		MALSR	MISSED APPROACH: Climb to 2100 direct FSM VORTAC and hold, continue climb-in-hold to 3300. (TACAN aircraft climbing left turn to 4000 direct FSM VORTAC then on FSM VORTAC R-036 to FIGGS/10 DME and hold NE, RT, 216° inbound).
<p>⚠ Circling NA for Cat E northwest of Rwy 8 and of Rwy 20. Circling Rwy 20, 26 NA at night.</p> <p>⚠ Rwy 8 helicopter visibility reduction below 3/4 SM NA. Inop table does not apply.</p>			

ATIS <b>124.775</b>	RAZORBACK APP CON * <b>120.9 343.75</b>	FORT SMITH TOWER * <b>118.3(CTAF) 323.175</b>	GND CON <b>121.9 275.8</b>	CLNC DEL <b>133.85 278.3</b>	UNICOM <b>122.95</b>
------------------------	--	--	-------------------------------	---------------------------------	-------------------------



ELEV 469	TDZE 469
----------	----------



CATEGORY	A	B	C	D	E
S-8	1080-1	611 (700-1)	1080-1 3/4	611 (700-1 3/4)	
CIRCLING	1140-1	671 (700-1)	1400-2 3/4 931 (1000-2 3/4)	1400-3	931 (1000-3)

SC-1, 31 OCT 2024 to 28 NOV 2024

SC-1, 31 OCT 2024 to 28 NOV 2024