

VOR/DME or TACAN Z RWY 4

VORTAC HRV <b>114.1</b> Chan <b>88</b>	APCH CRS <b>046°</b>	Rwy ldg TDZE Arprt Elev <b>10,000</b> <b>-2</b> <b>2</b>
--	-------------------------	---

AL-630 [USN]

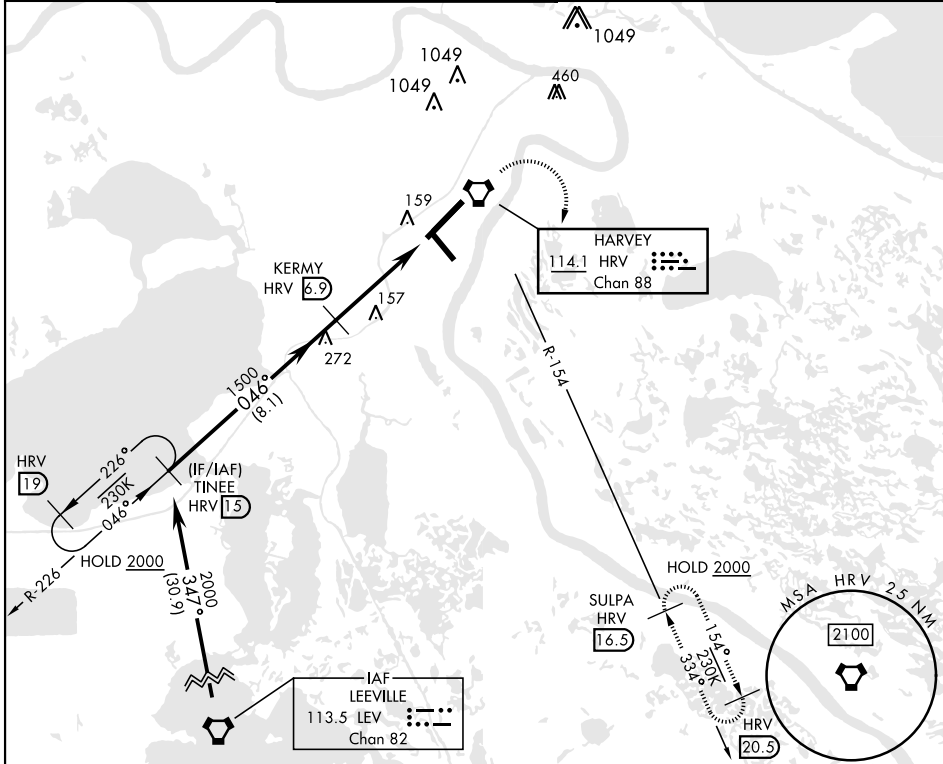
NEW ORLEANS NAS JRB  
(ALVIN CALLENDER FLD) (KNBG)

RNAV or ATC RADAR monitoring required.

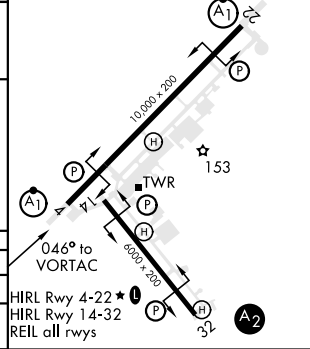
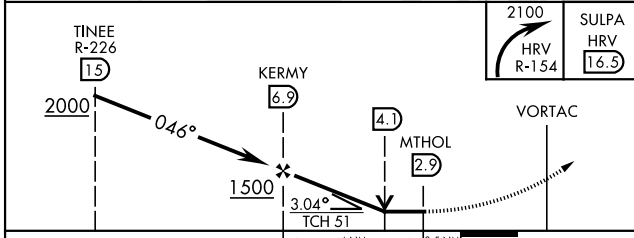


MISSED APPROACH: Execute climbing right turn to 2100, intercept HRV R-154 to SULPA. Cross 10 DME at 2000. Hold at SULPA.

ATIS ★ <b>279.55</b>	APP CON <b>123.85 256.9</b>	NAVY NEW ORLEANS TOWER ★ <b>123.8 340.2</b> (CTAF)	GND CON <b>121.6 270.35</b>	CLNC DEL <b>128.35 263.0</b>	ASR/ PAR
-------------------------	--------------------------------	---	--------------------------------	---------------------------------	-------------



EMERG SAFE ALT 100 NM 3000	ELEV <b>2</b>	TDZE <b>-2</b>
----------------------------	---------------	----------------



CATEGORY	A	B	C	D
S-4 *	600-½ 602 (600-½)	600-1¾ 602 (600-1¾)	640-1¾ 638 (700-1¾)	640-2 638 (700-2)
CIRCLING	640-1 638 (700-1)	640-1¾ 638 (700-1¾)	640-2 638 (700-2)	640-2 638 (700-2)

VOR/DME or TACAN Z RWY 4

SC-4, 18 MAY 2023 to 15 JUN 2023

SC-4, 18 MAY 2023 to 15 JUN 2023