

ILS or LOC/DME RWY 4

NEW ORLEANS NAS JRB
(ALVIN CALLENDER FLD) (KNBG)

LOC I-NBG 109.5	APCH CRS 044°	Rwy ldg TDZE Arprt Elev 10,000 -2 2
---------------------------	-------------------------	---

AL-630 [USN]

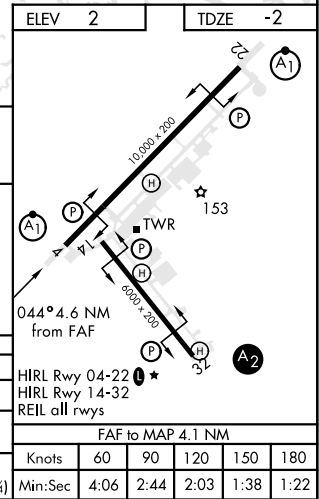
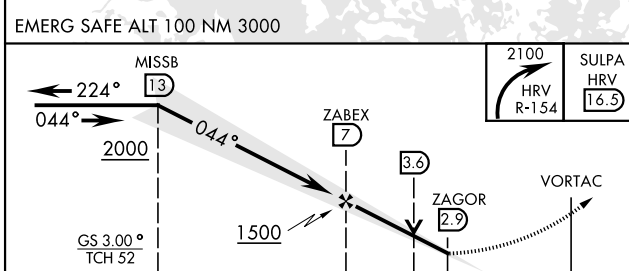
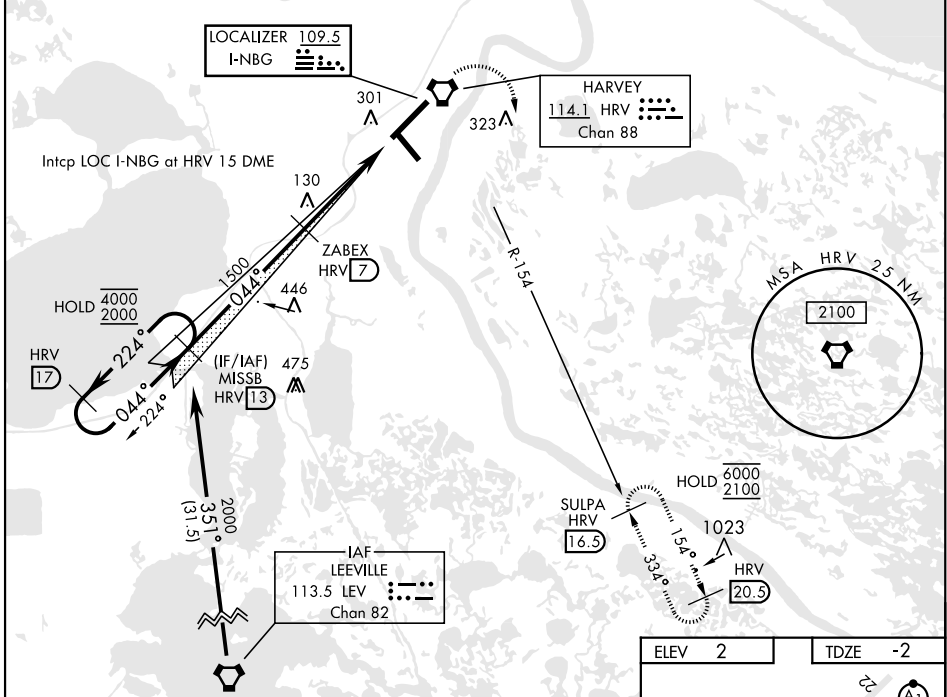
RNAV or ATC RADAR monitoring required.
▼ * When ALS inop, increase vis to ¾ mile.



MISSED APPROACH: Execute climbing right turn to 2100, intercept HRV VORTAC R-154 to SULPA. Cross 10 DME at 2000. Hold at SULPA.

ATIS ★ 279.55	APP CON 123.85 256.9	NAVY NEW ORLEANS TOWER ★ 123.8 340.2 (CTAF)	GND CON 121.6 270.35	CLNC DEL 128.35 263.0	ASR/ PAR
-------------------------	--------------------------------	---	--------------------------------	---------------------------------	----------

**** When ALS inop, increase CAT AB vis to 1 mile; CAT CDE vis to 1¼ miles**
***** Circling NA for CAT E NW of Rwy 4-22.**



CATEGORY	A	B	C	D	E
S-ILS 4 *	198-½		200	(200-½)	
S-LOC 4 **	420-½ 422 (500-½)		420-¾ 422 (500-¾)		
*** CIRCLING	640-1 638 (700-1)		640-1¾ 638 (700-1¾)	640-2 638 (700-2)	640-2¼ 638 (700-2¼)

FAF to MAP 4.1 NM					
Knots	60	90	120	150	180
Min:Sec	4:06	2:44	2:03	1:38	1:22

ILS or LOC/DME RWY 4

SC-4, 18 MAY 2023 to 15 JUN 2023

SC-4, 18 MAY 2023 to 15 JUN 2023