

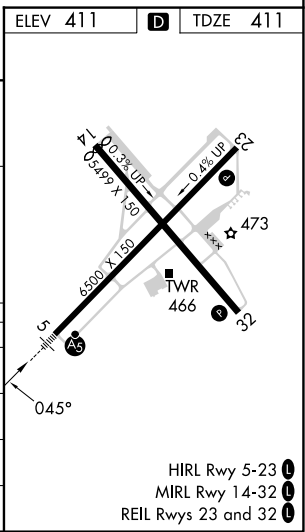
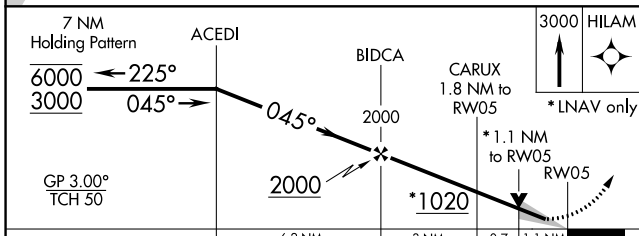
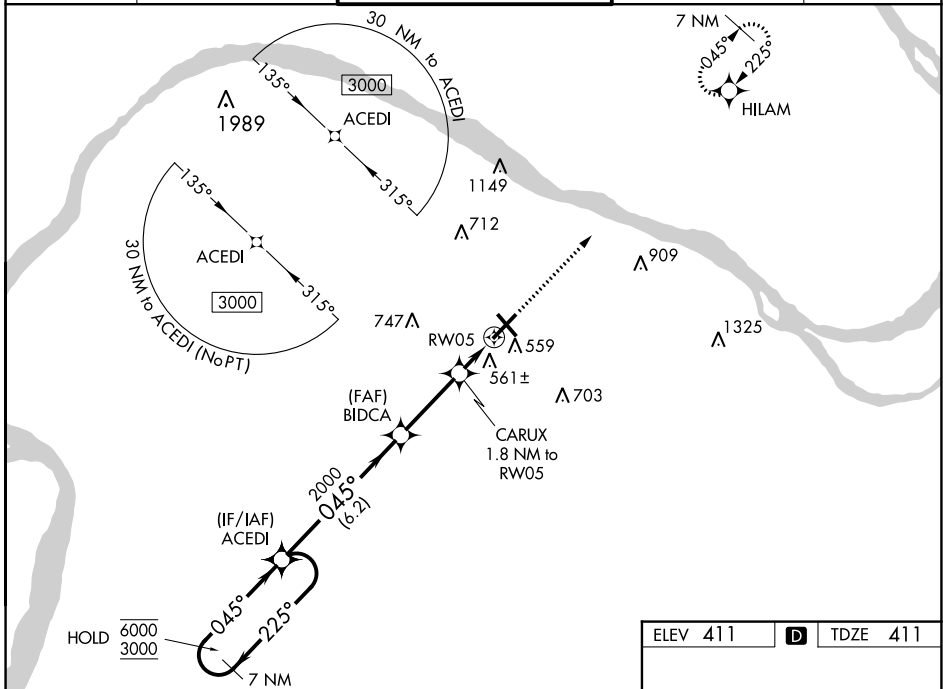
WAAS CH <b>93701</b> <b>W05A</b>	APP CRS <b>045°</b>	Rwy Idg <b>6500</b> TDZE <b>411</b> Apt Elev <b>411</b>
--	------------------------	---

# RNAV (GPS) RWY 5

BARKLEY RGNL (PAH)

RNP APCH.	MALSR 	MISSED APPROACH: Climb to 3000 direct HILAM and hold.
<p><b>▼</b> For uncompensated Baro-VNAV systems, LNAV/VNAV NA below -15°C or above 54°C.  <b>▲</b> For inop ALS, increase LNAV Cat C/D visibility to 1½ SM.</p>		

ASOS <b>118.375</b>	MEMPHIS CENTER <b>133.65 292.15</b>	PADUCAH TOWER ★ <b>119.6 (CTAF) 306.9</b>	GND CON <b>121.7 306.9</b>	UNICOM <b>122.95</b>
------------------------	--	--	-------------------------------	-------------------------



CATEGORY	A	B	C	D
LPV DA		611-½	200 (200-½)	
LNAV/DA/VNAV		837-¾	426 (500-¾)	
LNAV MDA	820-½	409 (500-½)	820-¾	409 (500-¾)
<b>C</b> CIRCLING	900-1	489 (500-1)	920-1½	1100-2¼
			509 (600-1½)	689 (700-2¼)

SE-1, 03 OCT 2024 to 31 OCT 2024

SE-1, 03 OCT 2024 to 31 OCT 2024