


WAAS CH <b>97412</b> <b>W36A</b>	APP CRS <b>004°</b>	Rwy Idg <b>5151</b> TDZE <b>343</b> Apt Elev <b>344</b>
--	------------------------	---

# RNAV (GPS) RWY 36

READING RGNL/CARL A SPAATZ FLD (RDG)

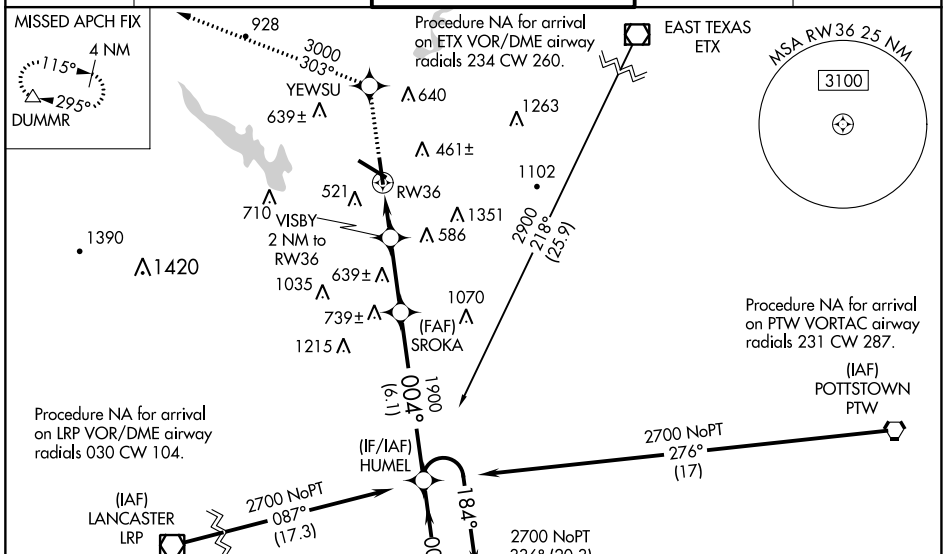
**⚠** Night landing: Rwy 18, 31 NA. Inoperative table does not apply. Baro-VNAV NA when using Harrisburg Intl altimeter setting. For uncompensated Baro-VNAV systems, LNAV/VNAV NA below -15°C (5°F) or above 48°C (118°F). DME/DME RNP-0.3 NA. When local altimeter setting not received, use Harrisburg Intl altimeter setting and increase LPV DA to 715 feet and visibility ¼ SM, increase LNAV/VNAV DA to 928 feet and visibility ¼ SM and increase all MDAs 100 feet, and LNAV Cats C and D and Circling Cats B and C visibility ¼ SM.

**MALSIF**

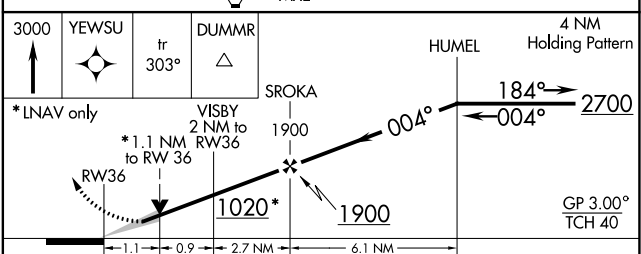
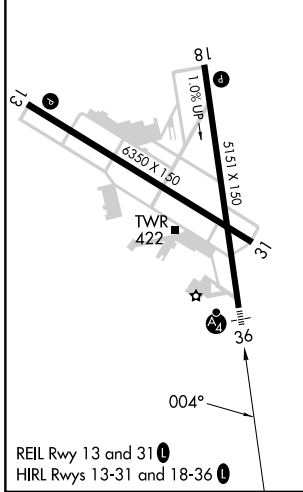


**MISSED APPROACH:** Climb to 3000 direct YEWSU and via 303° to DUMMR and hold, continue climb-in-hold to 3000.

ATIS <b>127.1</b>	READING APP CON * <b>125.15 257.9</b>	READING TOWER * <b>119.9 (CTAF) 288.3</b>	GND CON <b>121.9</b>	UNICOM <b>122.95</b>
----------------------	--	--	-------------------------	-------------------------



ELEV 344	<b>D</b>	TDZE 343
----------	----------	----------



CATEGORY	A	B	C	D
LPV DA		622-1	279 (300-1)	
LNAV/VNAV DA		835-1¾	492 (500-1¾)	
LNAV MDA		740-1	397 (400-1)	740-1½ 397 (400-1½)
CIRCLING	1020-1 676 (700-1)	1080-1 736 (800-1)	1280-2¾ 936 (1000-2¾)	1660-3 1316 (1400-3)

NE-4, 31 OCT 2024 to 28 NOV 2024

NE-4, 31 OCT 2024 to 28 NOV 2024