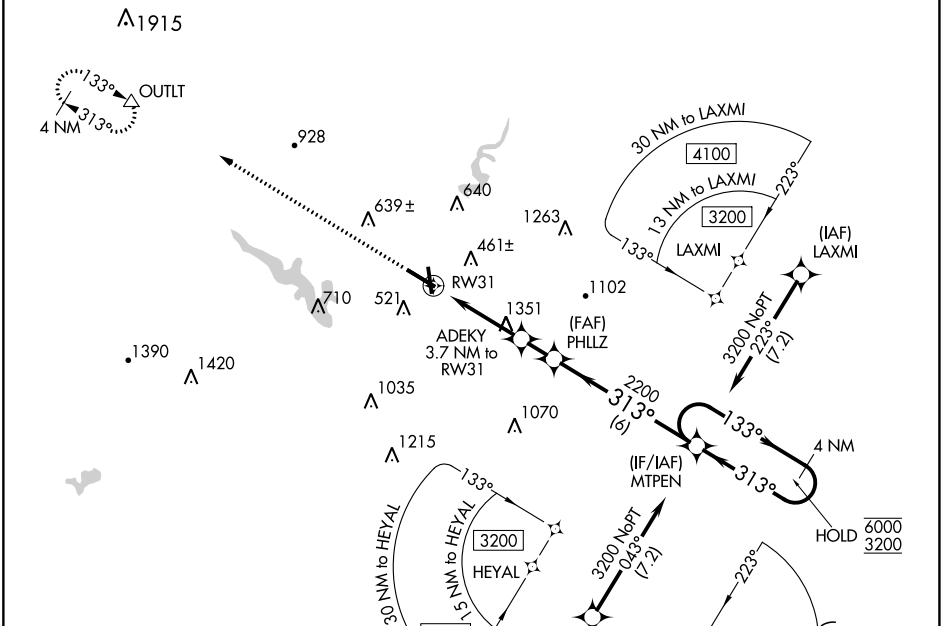


APP CRS Rwy Idg **6350**
 313° TDZE **330**
 Apt Elev **343**

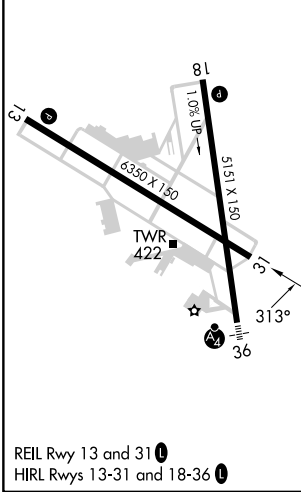
RNAV (GPS) RWY 31

READING RGNL/CARL A SPAATZ FLD (RDG)

RNP APCH - GPS.		MISSED APPROACH: Climb to 3200 direct OUTLT and hold.				
<p>▼ Rwy 31 helicopter visibility reduction below 1 SM NA. Straight-in and Circling Rwy 31 NA at night.</p> <p>▲</p>		ATIS 127.1	READING APP CON * 125.15 257.9	READING TOWER * 119.9 (CTAF) 0 288.3	GND CON 121.9	UNICOM 122.95



ELEV 343 **D** TDZE 330



3200	OUTLT	Visual Segment - Obstacles.		
↑	△	ADEKY 3.7 NM to RWY 31	PHLLZ	MTPEN 4 NM Holding Pattern
		RWY 31	1720	2200
		3.7 NM	1.4 NM	6 NM
CATEGORY	A	B	C	D
LNAV MDA	1620-1¼ 1290 (1300-1¼)	1620-1½ 1290 (1300-1½)	1620-3	1290 (1300-3)
CIRCLING	1620-1¼ 1277 (1300-1¼)	1620-1½ 1277 (1300-1½)	1620-3 1277 (1300-3)	1660-3 1317 (1400-3)

NE-4, 31 OCT 2024 to 28 NOV 2024

NE-4, 31 OCT 2024 to 28 NOV 2024