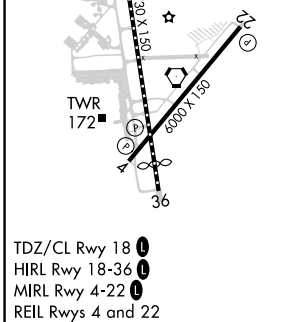
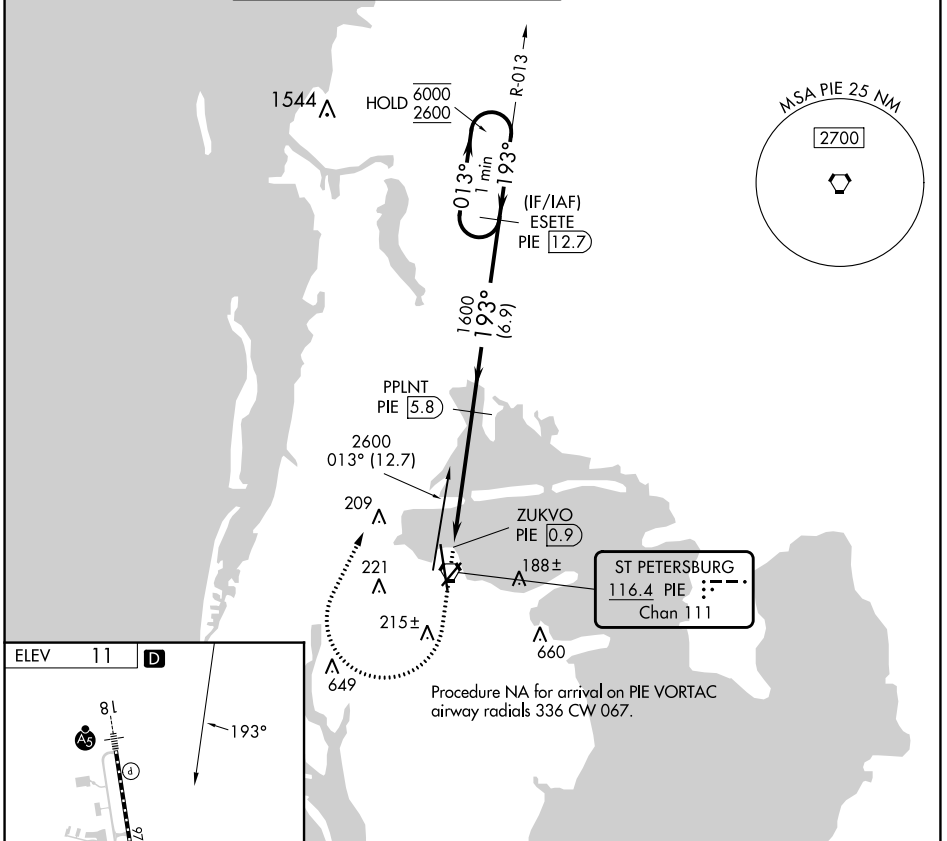


VORTAC PIE 116.4 Chan 111	APP CRS 193°	Rwy Idg TDZE Apt Elev	N/A N/A 11
---	------------------------	-----------------------------	-------------------------

VOR-B
ST PETE-CLEARWATER INTL (PIE)

DME required.		MISSED APPROACH: Climb to 700 then climbing right turn to 2600 on heading 030° and PIE VORTAC R-013 to ESETE/PIE 12.7 DME and hold.			
---------------	--	---	--	--	--

ATIS 134.5	TAMPA APP CON 125.3 316.05	ST PETERSBURG-CLEARWATER TOWER ★ 118.3 (CTAF) 0 257.8	GND CON 121.9 348.6	CLNC DEL 120.6 350.2	UNICOM 122.95
----------------------	--------------------------------------	---	-------------------------------	--------------------------------	-------------------------



ST PETERSBURG-CLEARWATER, FLORIDA
Orig 28FEB19

700 ↑ hdg 030°	2600 ↘ R-013 PIE ESETE PIE 12.7	PPLNT PIE 5.8 ZUKVO PIE 0.9 PIE VORTAC	ESETE PIE 12.7 One Minute Holding Pattern	
				013° → 6000 ← 193° 2600
4.9 NM		6.9 NM		
CATEGORY	A	B	C	D
CIRCLING	520-1	509 (600-1)	600-1½ 589 (600-1½)	620-2 609 (700-2)

27°55'N-82°41'W

ST PETE-CLEARWATER INTL (PIE)
VOR-B

SE-3, 03 OCT 2024 to 31 OCT 2024

SE-3, 03 OCT 2024 to 31 OCT 2024