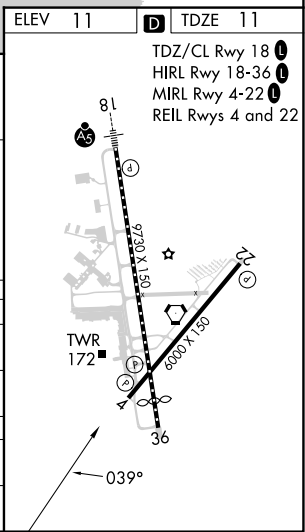
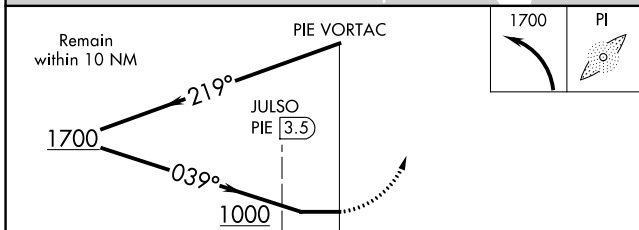
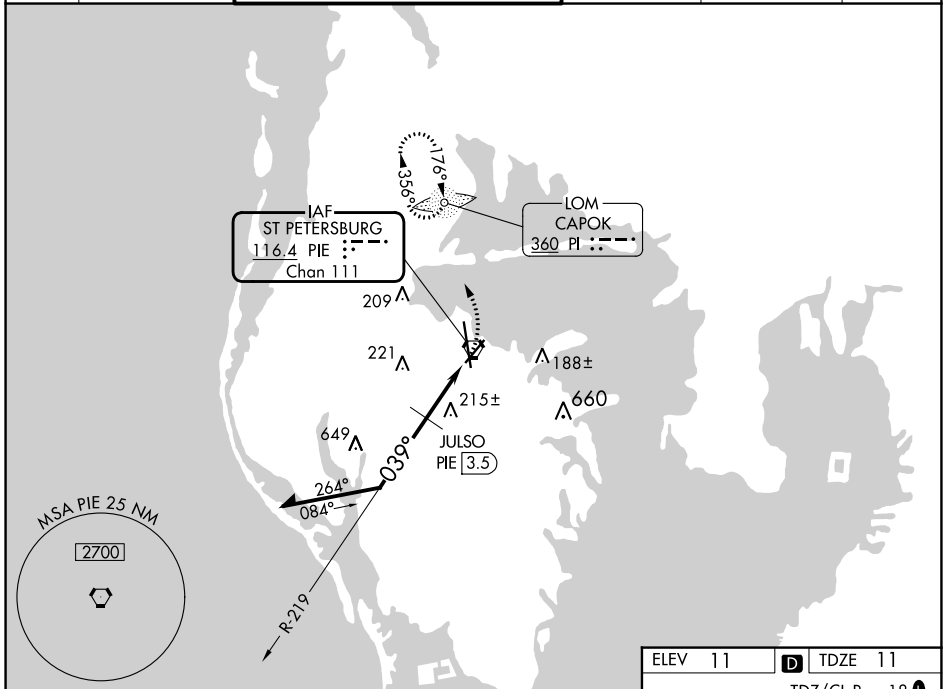


VORTAC PIE 116.4 Chan 111	APP CRS 039°	Rwy Idg TDZE 11 Apt Elev 11	6000
---	------------------------	---	-------------

VOR RWY 4
ST PETE-CLEARWATER INTL (PIE)

ADF required.		When local altimeter setting not received, use Tampa Intl altimeter setting and increase all MDAs 40 feet; JULSO fix minimums: increase Circling Cat C/D visibility ¼ SM. Helicopter visibility reduction below ¾ SM NA.		MISSED APPROACH: Climbing left turn to 1700 direct CAPOK LOM and hold.	
ATIS 134.5	TAMPA APP CON 125.3 316.05	ST PETERSBURG-CLEARWATER TOWER ★ 118.3 (CTAF) 0 257.8	GND CON 121.9 348.6	CLNC DEL 120.6 350.2	UNICOM 122.95



CATEGORY	A	B	C	D
S-4	1000-1¼ 989 (1000-1¼)	1000-1½ 989 (1000-1½)	1000-3	989 (1000-3)
CIRCLING	1000-1¼ 989 (1000-1¼)	1000-1½ 989 (1000-1½)	1000-3	989 (1000-3)
JULSO FIX MINIMUMS				
S-4	480-1	469 (500-1)	480-1¾	469 (500-1¾)
CIRCLING	520-1	509 (600-1)	600-1½ 589 (600-1½)	620-2 609 (700-2)

SE-3, 11 JUL 2024 to 08 AUG 2024

SE-3, 11 JUL 2024 to 08 AUG 2024