

WAAS CH 61039 W18A	APP CRS 176°	Rwy Idg TDZE Apt Elev	9180 7 11
--	------------------------	-----------------------------	--------------------------------------

RNAV (GPS) RWY 18

ST PETE-CLEARWATER INTL (PIE)

RNP APCH - GPS.

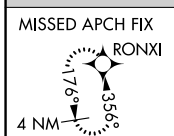
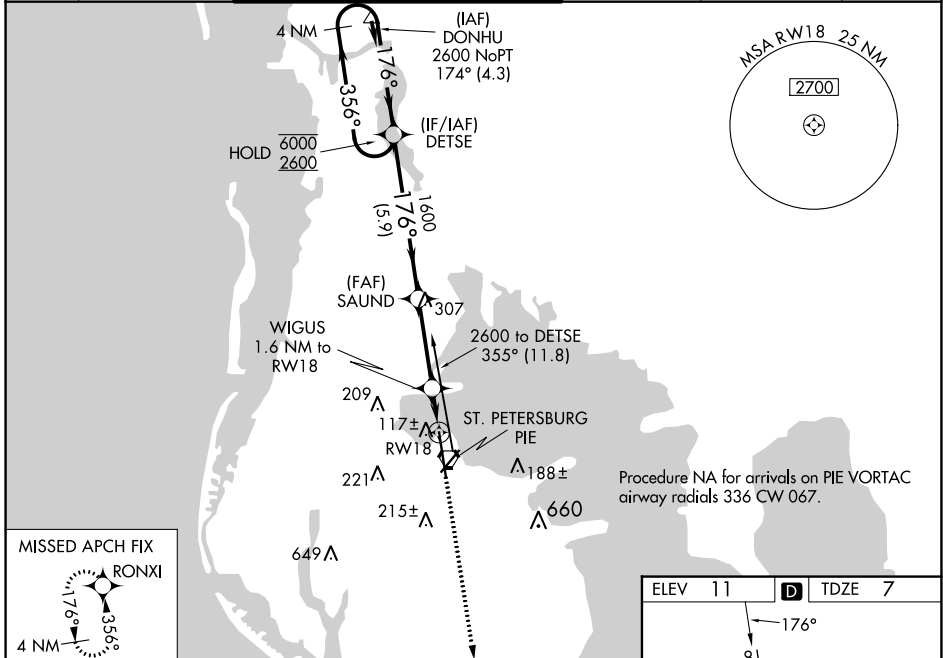
⚠ Circling to Rwy 22 NA at night. For uncompensated Baro-VNAV systems, LNAV/VNAV NA below 3°C or above 54°C. For inop ALS, increase LNAV/VNAV all Cats visibility to RVR 4500 and LNAV Cats C and D visibility to RVR 5500.

MALSR

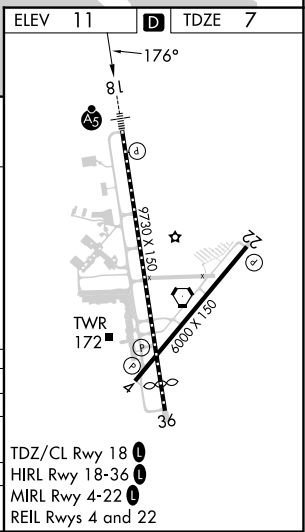
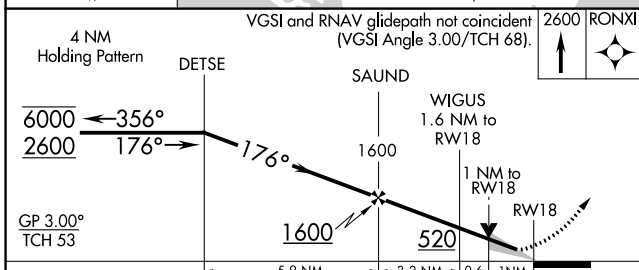


MISSED APPROACH: Climb to 2600 direct RONXI and hold.

ATIS 134.5	TAMPA APP CON 125.3 316.05	ST PETERSBURG-CLEARWATER TOWER ★ 118.3 (CTAF) 0 257.8	GND CON 121.9 348.6	CLNC DEL 120.6 350.2	UNICOM 122.95
----------------------	--------------------------------------	---	-------------------------------	--------------------------------	-------------------------



Procedure NA for arrivals on PIE VORTAC airway radials 336 CW 067.



CATEGORY	A	B	C	D
LPV DA	207/18 200 (200-½)			
LNAV/VNAV DA	278/24 271 (300-½)			
LNAV MDA	380/24 373 (400-½)	380/35 373 (400-¾)		
CIRCLING	520-1 509 (600-1)	600-1½ 589 (600-1½)	620-2 609 (700-2)	

TDZ/CL Rwy 18 1
HIRL Rwy 18-36 1
MIRL Rwy 4-22 1
REIL Rws 4 and 22

SE-3, 18 APR 2024 to 16 MAY 2024

SE-3, 18 APR 2024 to 16 MAY 2024