

# NORTH BAY VISUAL RWY 18

AL-625 (FAA)

ST PETE-CLEARWATER INTL (PIE)  
ST PETERSBURG-CLEARWATER, FLORIDA

ATIS  
 134.5  
 TAMPA APP CON  
 125.3 316.05  
 ST PETERSBURG-CLEARWATER TOWER ★  
 118.3 (CTAF) 257.8  
 GND CON  
 121.9 348.6  
 CLNC DEL  
 120.6 350.2  
 UNICOM  
 122.95

## LAKE TARPON

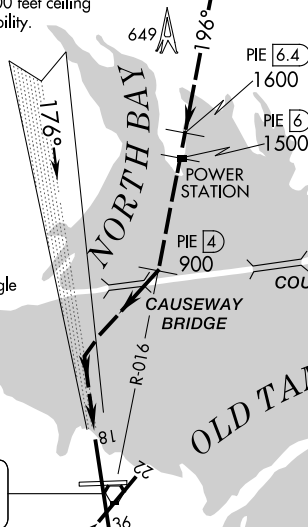
### RADAR REQUIRED

PROCEDURE NOT AUTHORIZED AT NIGHT  
 NOT AUTHORIZED WHEN TOWER NOT IN OPERATION

Weather Minimums: 2100 feet ceiling  
 and 3 miles visibility.

GULF OF MEXICO

Vertical Guidance Navaid and Angle  
 I-PIE 3.00°  
 PAPI Rwy 18 3.00°



SE-3, 18 APR 2024 to 16 MAY 2024

SE-3, 18 APR 2024 to 16 MAY 2024

1NM	2	3	4	5	6	7	8	9	10	11	12	13	14	15	16
-----	---	---	---	---	---	---	---	---	----	----	----	----	----	----	----



### NORTH BAY VISUAL APPROACH

When cleared for a NORTH BAY VISUAL APPROACH, aircraft will proceed visually from over the power station (PIE R-016, 6 DME) heading 196° direct to the Causeway Bridge, then right turn to intercept the final approach course to Rwy 18.

# NORTH BAY VISUAL RWY 18

Amdt 6 29MAR18

27°55'N-82°41'W

ST PETERSBURG-CLEARWATER, FLORIDA  
ST PETE-CLEARWATER INTL (PIE)