

(LLRGO1.LLRGO) 24137

AL-625 (FAA)

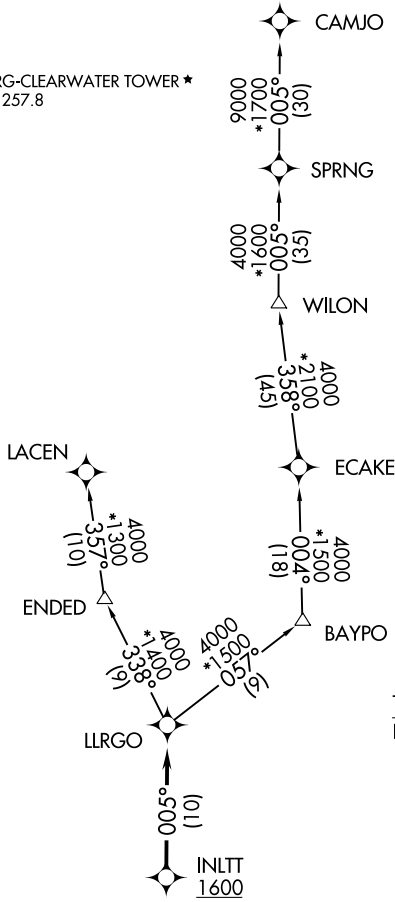
ST PETE-CLEARWATER INTL (PIE)
ST PETERSBURG-CLEARWATER, FLORIDA

LLRGO ONE DEPARTURE (RNAV)

TAMPA DEP CON
125.3 316.05
ATIS
134.5
CLNC DEL
120.6 350.2
GND CON
121.9 348.6
ST. PETERSBURG-CLEARWATER TOWER *
118.3 (CTAF) 257.8

RNAV 1 - DME/DME/IRU or GPS.
RADAR required.

**TOP ALTITUDE:
1600**

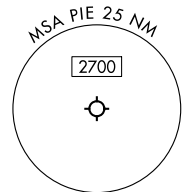
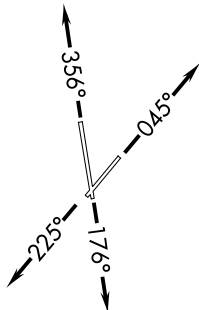


NOTE: For jets less than 60,000 lbs
or as assigned by ATC.

TAKEOFF MINIMUMS

Rwys 4, 18, 36: Standard.

Rwy 22: 300-1 $\frac{1}{8}$ or standard with
minimum climb of 230'/NM
to 300, or alternatively, with
standard takeoff minimums
and a normal 200'/NM climb
gradient, takeoff must occur no
later than 1700' prior to DER.



NOTE: Chart not to scale.

(CONTINUED ON FOLLOWING PAGE)

LLRGO ONE DEPARTURE (RNAV)
(LLRGO1.LLRGO) 16MAY24

ST PETERSBURG-CLEARWATER, FLORIDA
ST PETE-CLEARWATER INTL (PIE)

SE-3, 03 OCT 2024 to 31 OCT 2024

SE-3, 03 OCT 2024 to 31 OCT 2024