

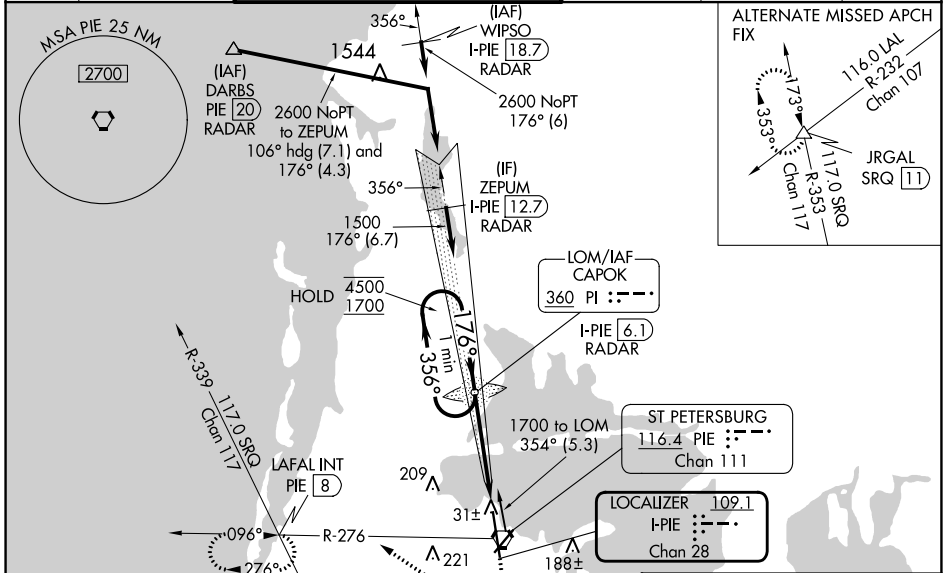
LOC/DME I-PIE 109.1 Chan 28	APP CRS 176°	Rwy Idg TDZE Apt Elev	9180 7 11
---	------------------------	-----------------------------	--------------------------------------

ILS RWY 18 (SA CAT I & II)

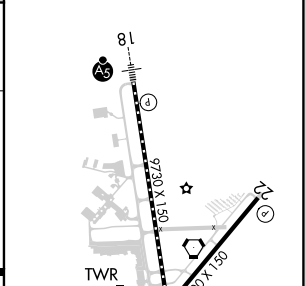
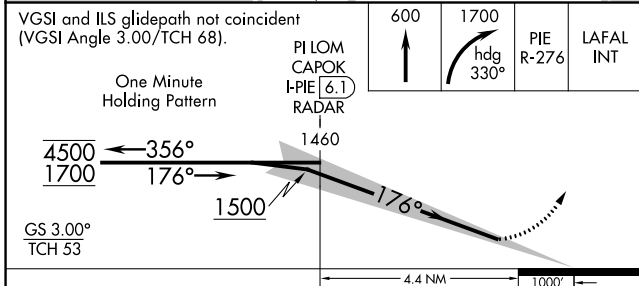
ST PETE-CLEARWATER INTL (PIE)

DME, RADAR, or ADF required.		MALSR	MISSED APPROACH: Climb to 600 then climbing right turn to 1700 on heading 330° and PIE VORTAC R-276 to LAFAL INT/PIE 8 DME and hold, continue climb-in-hold to 1700.
SA CAT I & II: Requires specific OPSPEC, MSPEC, or LOA approval. SA CAT I & II S-ILS 18 NA when control tower closed.			

ATIS 134.5	TAMPA APP CON 125.3 316.05	ST PETERSBURG-CLEARWATER TOWER ★ 118.3 (CTAF) 0 257.8	GND CON 121.9 348.6	CLNC DEL 120.6 350.2	UNICOM 122.95
----------------------	--------------------------------------	---	-------------------------------	--------------------------------	-------------------------



ELEV 11	TDZE 7
---------	--------



CATEGORY	A	B	C	D
S-ILS 18	SA CAT I RA 157/14	150 DA 157		
S-ILS 18	SA CAT II RA 107/12	100 DA 107		

SA CATEGORY I & II ILS - SPECIAL AIRCREW & AIRCRAFT CERTIFICATION REQUIRED

TDZ/CL Rwy 18
HIRL Rwy 18-36
MIRL Rwy 4-22
REIL Rws 4 and 22

SE-3, 18 APR 2024 to 16 MAY 2024

SE-3, 18 APR 2024 to 16 MAY 2024