

|  |                        |   |
|--|------------------------|---|
| WAAS<br>CH <b>42807</b><br><b>W31B</b> | APP CRS<br><b>309°</b> | Rwy Idg <b>7202</b><br>TDZE <b>593</b><br>Apt Elev <b>612</b> |
|--|------------------------|---|

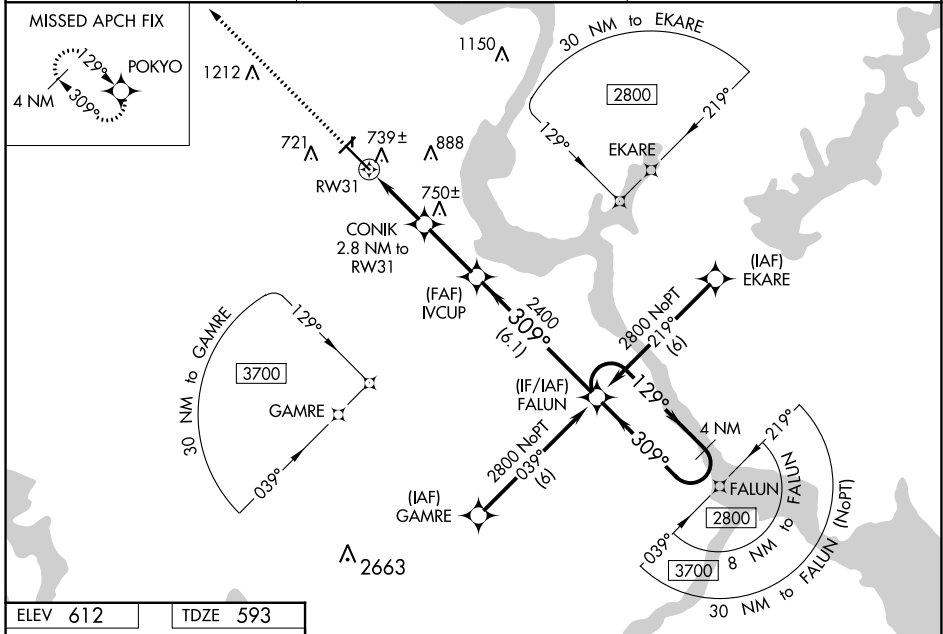
# RNAV (GPS) RWY 31

MUSKOGEE-DAVIS RGNL (MKO)

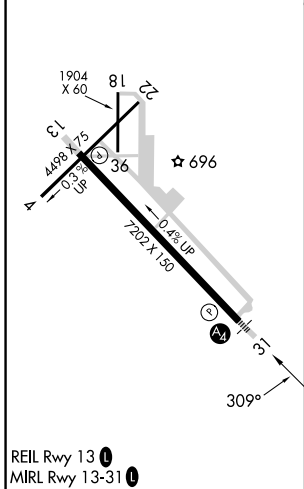
**⚠** For uncompensated Baro-VNAV systems, procedure NA below -16°C (4°F) or above 47°C (116°F). Baro-VNAV and VDP NA when using Tahlequah altimeter setting. When local altimeter setting not received, use Tahlequah altimeter setting: increase LPV DA to 934, LNAV/VNAV DA to 1230, and visibility LPV and LNAV/VNAV all Cats ¼ SM; increase all MDA 100 feet and visibility LNAV Cat C/D/E and Circling Cat C ¼ SM, and Circling Cat D ½ SM. Inop table does not apply to LNAV/VNAV Cat A/B/C and LNAV Cat C. Circling Rwy 4, 18, 22, 36 NA at night. Rwy 4, 18, 22, 36 helicopter visibility reduction below 1 SM NA.

MALS MISSED APPROACH: Climb to 2900 direct POKYO and hold.

|                        |  |                                 |
|------------------------|--|---------------------------------|
| ASOS<br><b>135.025</b> | FORT WORTH CENTER<br><b>132.2 338.35</b> | UNICOM<br><b>122.8 (CTAF) 0</b> |
|------------------------|--|---------------------------------|



|                 |                 |
|-----------------|-----------------|
| ELEV <b>612</b> | TDZE <b>593</b> |
|-----------------|-----------------|



|                      |                       |                       |                       |                         |                        |
|----------------------|-----------------------|-----------------------|-----------------------|-------------------------|------------------------|
| 2900 POKYO           |                       |                       |                       |                         |                        |
| *LNAV only.          |                       |                       |                       |                         |                        |
| CONIK 2.8 NM to RW31 |                       |                       |                       |                         |                        |
| IVCUP                |                       |                       |                       |                         |                        |
| FALUN                |                       |                       |                       |                         |                        |
| 4 NM Holding Pattern |                       |                       |                       |                         |                        |
| 2800                 |                       |                       |                       |                         |                        |
| GP 3.00° TCH 53      |                       |                       |                       |                         |                        |
| 1.2                  | 1.6 NM                | 2.7 NM                | 6.1 NM                |                         |                        |
| CATEGORY             | A                     | B                     | C                     | D                       | E                      |
| LPV DA               | 843-1                 |                       | 250 (300-1)           |                         |                        |
| LNAV/VNAV DA         | 1139-2                |                       | 546 (600-2)           |                         |                        |
| LNAV MDA             | 1000-¾                | 407 (400-¾)           | 1000-¼                | 407 (400-¼)             | 1000-½<br>407 (400-½)  |
| CIRCLING             | 1140-1<br>528 (600-1) | 1180-1<br>568 (600-1) | 1320-2<br>708 (800-2) | 1400-2½<br>788 (800-2½) | 1580-3<br>968 (1000-3) |

SC-1, 08 AUG 2024 to 05 SEP 2024

SC-1, 08 AUG 2024 to 05 SEP 2024