

TYLER, TEXAS

AL-622 (FAA)

23278

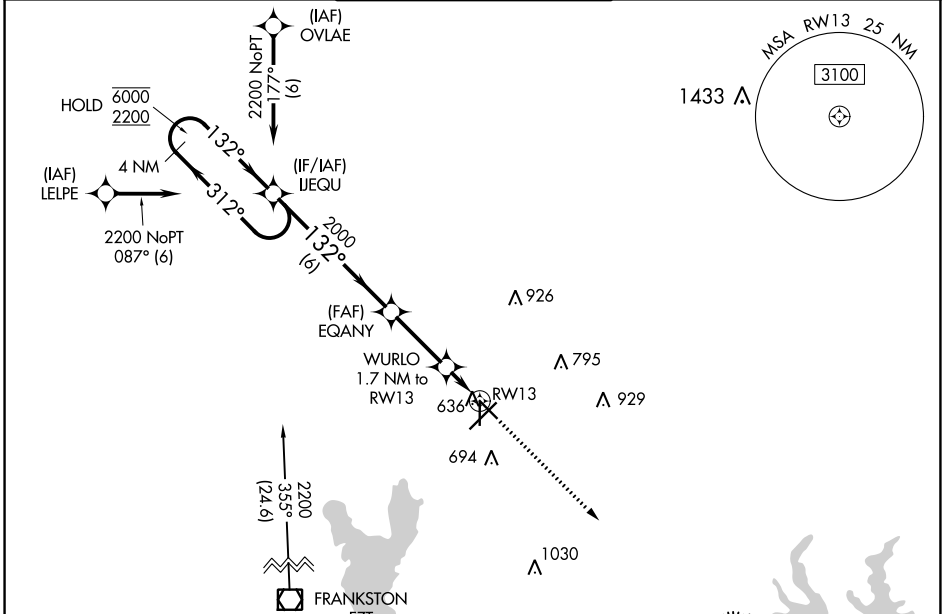
WAAS CH <b>45701</b> <b>W13A</b>	APP CRS <b>132°</b>	Rwy ldg <b>5198</b> TDZE <b>539</b> Apt Elev <b>544</b>
--	------------------------	---

# RNAV (GPS) RWY 13

TYLER POUNDS RGNL (TYR)

RNP APCH.		MISSED APPROACH: Climb to 3000 direct JUHWO and hold.		
<p>▼ For uncompensated Baro-VNAV systems, LNAV/VNAV NA below -5°C or above 54°C.</p>				

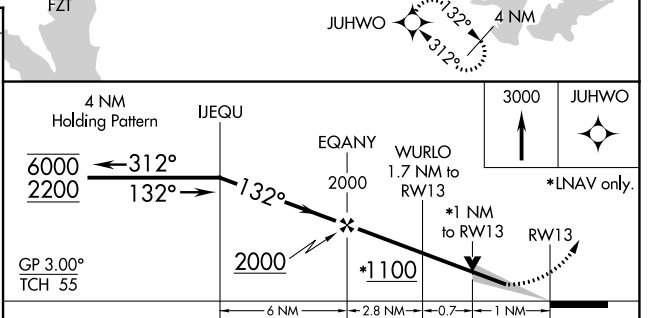
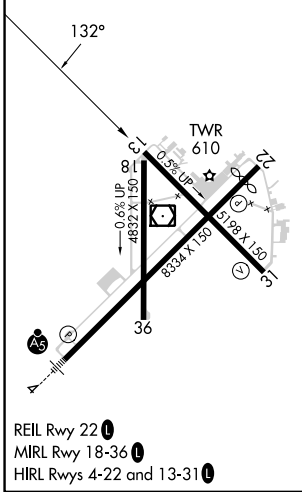
ATIS <b>126.25</b>	LONGVIEW APP CON * <b>128.75 379.15</b>	POUNDS TOWER * <b>120.1 (CTAF) 257.8</b>	GND CON <b>121.9</b>	UNICOM <b>122.95</b>
-----------------------	--	---	-------------------------	-------------------------



SC-2, 03 OCT 2024 to 31 OCT 2024

SC-2, 03 OCT 2024 to 31 OCT 2024

ELEV 544	<b>D</b>	TDZE 539
----------	----------	----------



CATEGORY	A	B	C	D
LPV DA		739-3/4	200 (200-3/4)	
LNAV/VNAV DA		820-7/8	281 (300-7/8)	
LNAV MDA		900-1	361 (400-1)	
<b>C</b> CIRCLING	980-1 436 (500-1)	1020-1 476 (500-1)	1160-1 3/4 616 (700-1 3/4)	1280-2 1/4 736 (800-2 1/4)

TYLER, TEXAS  
Amdt 3A 08OCT20

32°21'N-95°24'W

# TYLER POUNDS RGNL (TYR) RNAV (GPS) RWY 13