

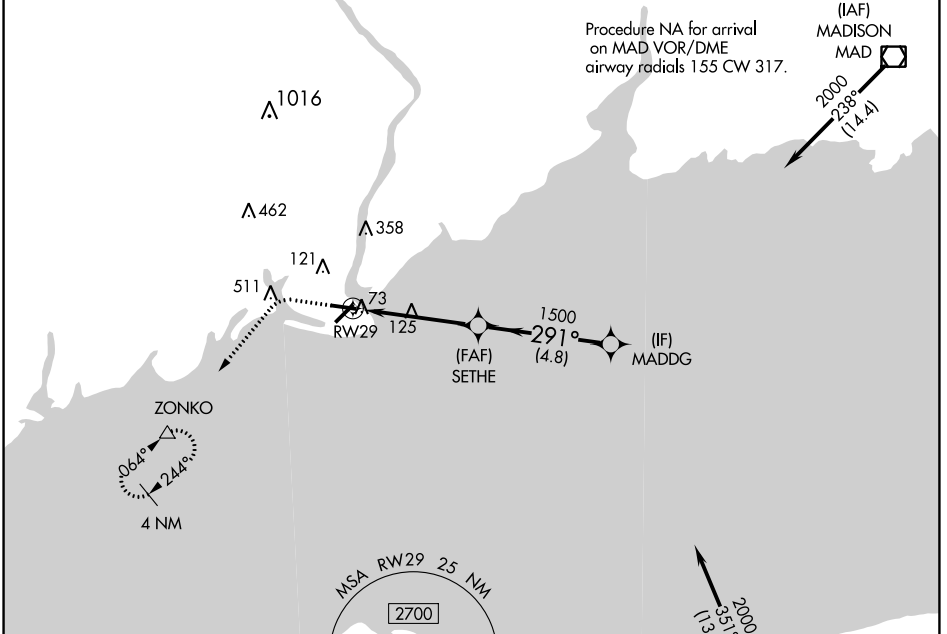
APP CRS 291°	Rwy Idg TDZE Apt Elev	4395 7 9
------------------------	-----------------------------	-------------------------------------

RNAV (GPS) RWY 29

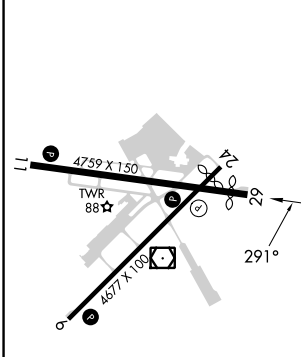
BRIDGEPORT/SIKORSKY (BDR)

RNP APCH - GPS.		MISSED APPROACH: Climb to 500 then climbing left turn to 2000 direct ZONKO and hold.				
<p>▼ Rwy 29 helicopter visibility reduction below 1 SM NA.</p> <p>▲ Circling Rwy 11, 29 NA at night. Rwy 29 Straight-in minimums NA at night.</p>						

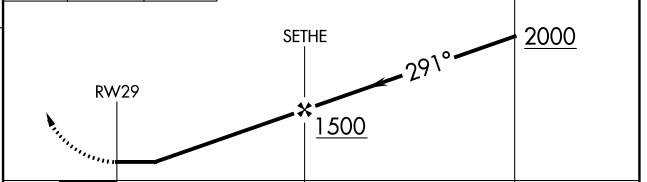
ATIS 119.15	NEW YORK APP CON 124.075 343.65	BRIDGEPORT TOWER* 120.9 (CTAF) 257.8	GND CON 121.75 257.8	CLNC DEL 121.75	CLNC DEL 124.075 (When twr closed)	UNICOM 123.0
-----------------------	---	---	--------------------------------	---------------------------	---	------------------------



ELEV 9	D	TDZE 7
--------	---	--------



500	2000	ZONKO	Visual Segment-Obstacles.
↑	↶	△	



CATEGORY	A	B	C	D
LNAV MDA	380-1		373 (400-1)	
☑ CIRCLING	480-1 471 (500-1)	620-1 611 (700-1)	820-2½ 811 (900-2½)	820-2¾ 811 (900-2¾)

NE-1, 31 OCT 2024 to 28 NOV 2024

NE-1, 31 OCT 2024 to 28 NOV 2024