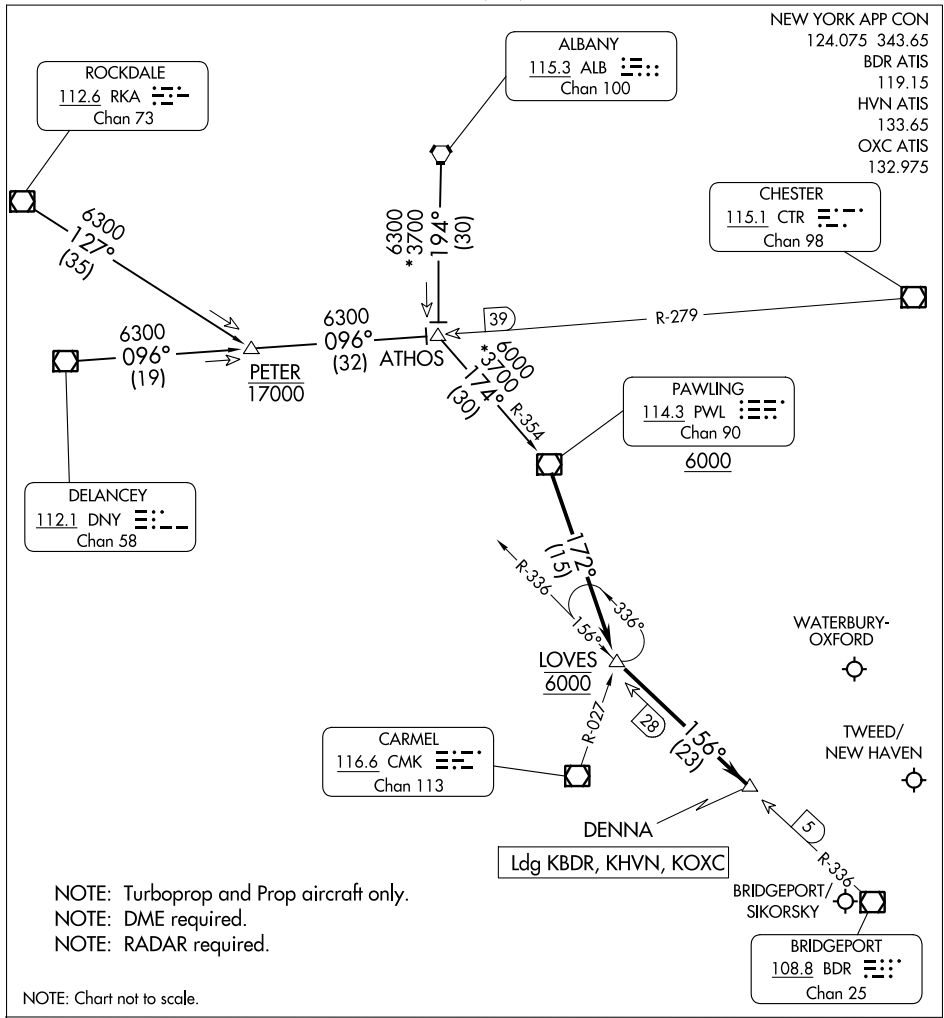


DENNA THREE ARRIVAL

AL-621 (FAA)

BRIDGEPORT, CONNECTICUT



NE-1, 31 OCT 2024 to 28 NOV 2024

NE-1, 31 OCT 2024 to 28 NOV 2024

- NOTE: Turboprop and Prop aircraft only.
- NOTE: DME required.
- NOTE: RADAR required.

NOTE: Chart not to scale.

ARRIVAL ROUTE DESCRIPTION

ALBANY TRANSITION (ALB.DENNA3): From over ALB VORTAC on ALB R-194 to ATHOS, then on PWL R-354 to PWL VOR/DME, thence....

DELANCEY TRANSITION (DNY.DENNA3): From over DNY VOR/DME on DNY R-096 to ATHOS, then on PWL R-354 to PWL VOR/DME, thence....

ROCKDALE TRANSITION (RKA.DENNA3): From over RKA VOR/DME on RKA R-127 to PETER, then on DNY R-096 to ATHOS, then on PWL R-354 to PWL VOR/DME, thence....

....from PWL VOR/DME on PWL R-172 to cross LOVES at 6000, then on BRIDGEPORT (BDR) R-336 to DENNA. Expect RADAR vectors.

DENNA THREE ARRIVAL

BRIDGEPORT, CONNECTICUT