

WAAS CH <b>57928</b> <b>W13A</b>	APP CRS <b>129°</b>	Rwy Idg TDZE Apt Elev	<b>5099</b> <b>881</b> <b>881</b>
--	------------------------	-----------------------------	---

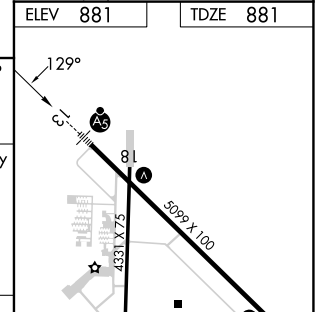
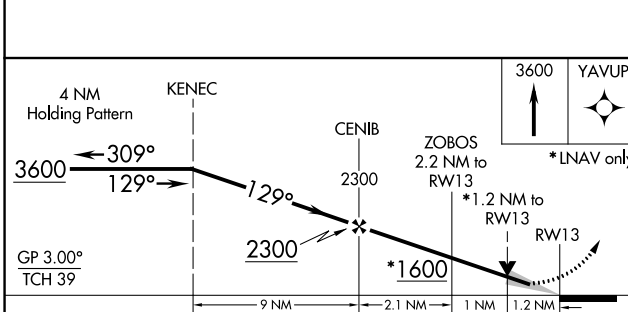
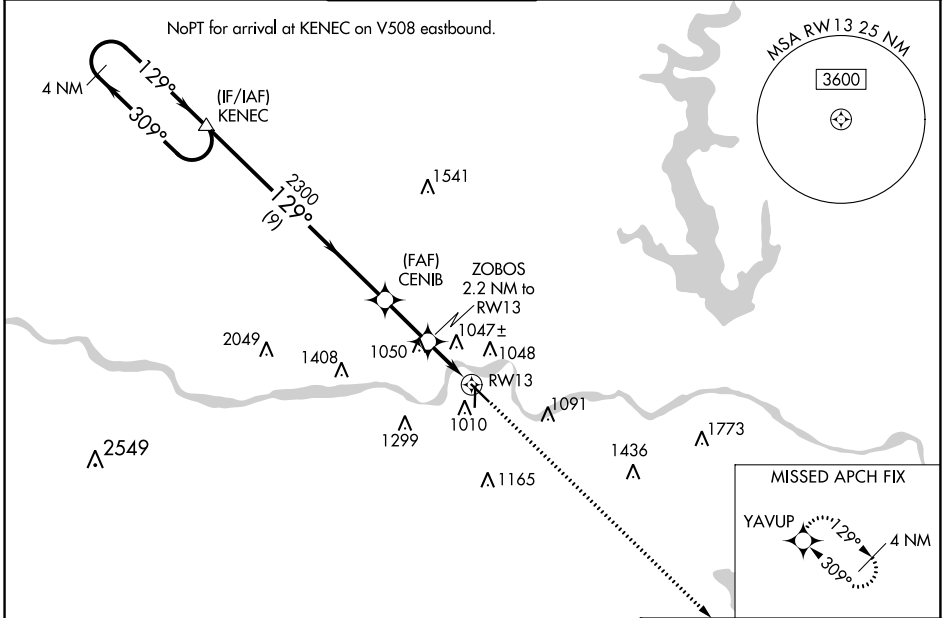
# RNAV (GPS) RWY 13

PHILIP BILLARD MUNI (TOP)

**▽** For uncompensated Baro-VNAV systems, LNAV/VNAV NA below -18°C (0°F) or above 54°C (130°F). DME/DME RNP-0.3 NA.  
For inop ALS, increase LNAV/VNAV all Cats visibility to ¾ SM and LNAV Cat C visibility to 1½ SM.

**MALSR**  
  
**MISSED APPROACH:** Climb to 3600 direct YAVUP and hold.

ASOS <b>121.275</b>	KANSAS CITY CENTER <b>123.8 343.7</b>	TOPEKA TOWER★ <b>118.7 (CTAF) 0 257.8</b>	GND CON <b>121.9</b>	CLNC DEL <b>121.9</b>	UNICOM <b>122.95</b>
------------------------	--	--	-------------------------	--------------------------	-------------------------



CATEGORY	A	B	C	D
LPV DA	1091-½ 210 (300-½)			NA
LNAV/VNAV DA	1135-½ 254 (300-½)			NA
LNAV MDA	1300-½	419 (500-½)	1300-¾ 419 (500-¾)	NA
<b>C</b> CIRCLING	1360-1 479 (500-1)	1440-1 559 (600-1)	1600-2 719 (800-2)	NA

ELEV 881 TDZE 881

3600 YAVUP  
\*LNAV only

3600 ← 309°  
129° →

GP 3.00  
TCH 39

9 NM 2.1 NM 1 NM 1.2 NM

HIRL Rwy 13-31  
REIL Rwy 18 and 31  
MIRL Rwy 18-36

NC-2, 05 SEP 2024 to 03 OCT 2024

NC-2, 05 SEP 2024 to 03 OCT 2024