

LOC I-TOP 110.7	APP CRS 129°	Rwy ldg TDZE Apt Elev	5099 881 881
---------------------------	------------------------	-----------------------------	---

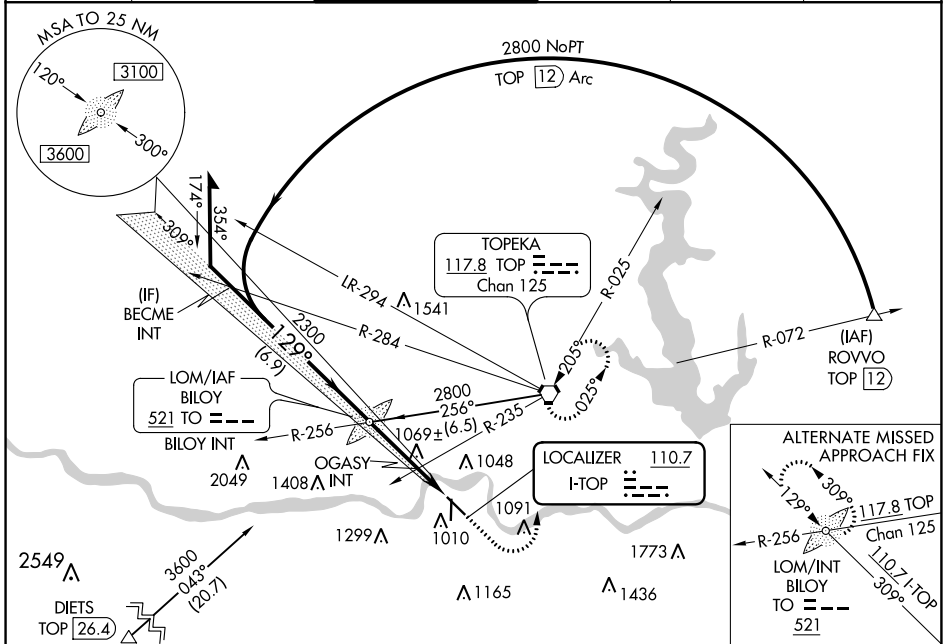
ILS or LOC RWY 13

PHILIP BILLARD MUNI (TOP)

▼ For inop ALS, increase S-LOC 13 Cat C visibility to 1 3/8 SM.

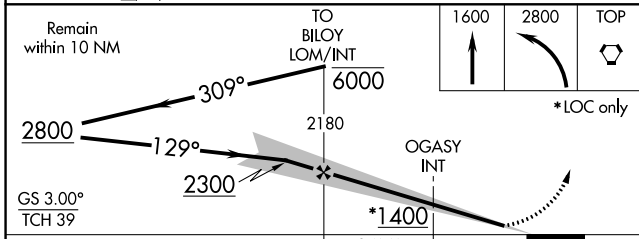
⚠ MISSED APPROACH: Climb to 1600 then climbing left turn to 2800 direct TOP VORTAC and hold.

ASOS 121.275	KANSAS CITY CENTER 123.8 343.7	TOPEKA TOWER * 118.7 (CTAF) 257.8	GND CON 121.9	CLNC DEL 121.9	UNICOM 122.95
------------------------	--	---	-------------------------	--------------------------	-------------------------



NC-2, 05 SEP 2024 to 03 OCT 2024

NC-2, 05 SEP 2024 to 03 OCT 2024



CATEGORY	A	B	C	D
S-ILS 13	1091-1/2 210 (300-1/2)			NA
S-LOC 13	1400-1/2 519 (600-1/2)		1400-1 519 (600-1)	NA
C CIRCLING	1400-1 519 (600-1)	1440-1 559 (600-1)	1600-2 719 (800-2)	NA
OGASY FIX MINIMUMS				
S-LOC 13	1340-1/2 459 (500-1/2)		1340-7/8 459 (500-7/8)	NA
C CIRCLING	1360-1 479 (500-1)	1440-1 559 (600-1)	1600-2 719 (800-2)	NA

ELEV 881 | TDZE 881

Diagram of RWY 13 showing:

- TWR 963:** Tower location.
- HIRL Rwy 13-31:** High Intensity Runway Lights.
- REIL Rws 18 and 31:** Runway End Identifier Lights.
- MIRL Rws 18-36:** Medium Intensity Runway Lights.
- 36:** Runway length.
- 4331 X 75:** Runway width.
- 5099 X 100:** Runway width.

FAF to MAP 3.9 NM					
Knots	60	90	120	150	180
Min:Sec	3:54	2:36	1:57	1:34	1:18