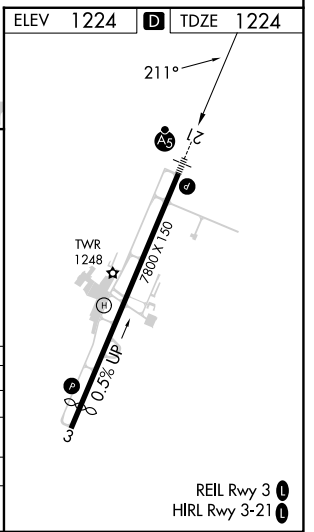
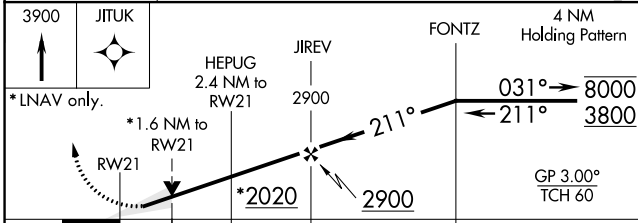
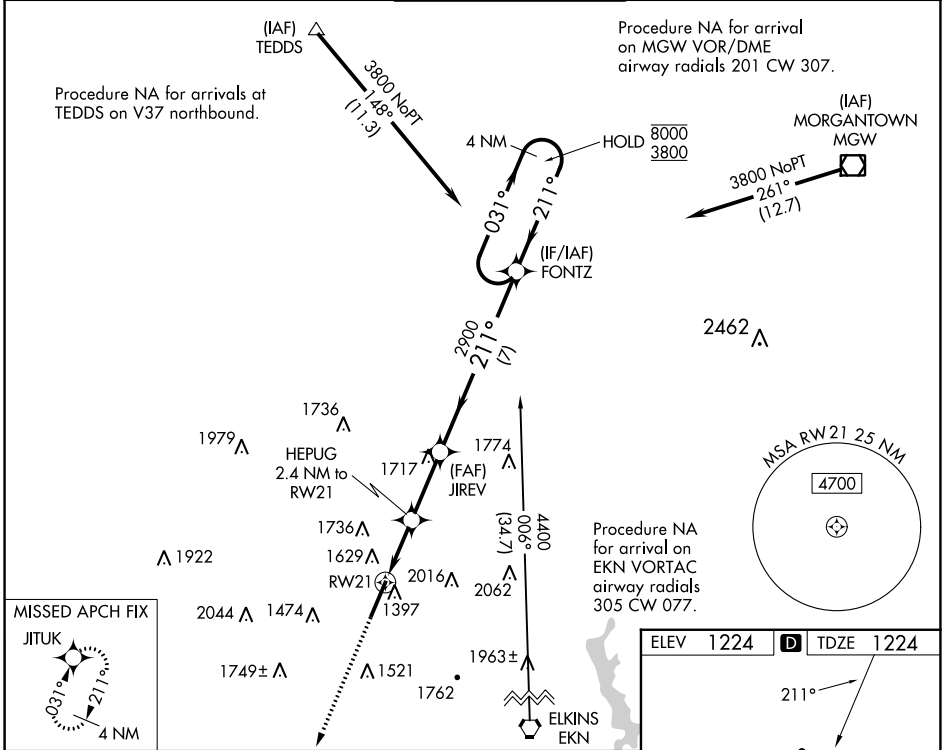


| | | | |
|--|------------------------|-----------------------------|---|
| WAAS CH 82504 W21A | APP CRS 211° | Rwy Idg TDZE Apt Elev | 7130 1224 1224 |
|--|------------------------|-----------------------------|---|

RNAV (GPS) RWY 21

NORTH CENTRAL WEST VIRGINIA (CKB)

| | | | | | |
|--|--|---|-------------------------|---|--|
| RNP APCH. | | MALSR | | MISSED APPROACH: Climb to 3900 direct JITUK and hold. | |
| <p>▼ For uncompensated Baro-VNAV systems, LNAV/VNAV NA below -16°C or above 54°C. For inop ALS, increase LNAV Cats C and D visibility to 1 1/2 SM.</p> | | | | | |
| ATIS 127.825 | CLARKSBURG APP CON ★ 121.15 284.65 | CLARKSBURG TOWER ★ 126.7 (CTAF) 257.925 | GND CON 121.9 | UNICOM 123.0 | |



| | | | | |
|-------------------|-----------------------|-------------------------------|-----------------|-----------------|
| CATEGORY | A | B | C | D |
| LPV DA | | 1424/24 | 200 (200-1/2) | |
| LNAV/VNAV DA | | 1786-1 3/8 | 562 (600-1 3/8) | |
| LNAV MDA | 1800/24 | 576 (600-1/2) | 1800-1 1/4 | 576 (600-1 1/4) |
| C CIRCLING | 1940-1 716 (800-1) | 2040-1 1/4 816 (900-1 1/4) | 2320-3 | 1096 (1100-3) |

NE-4, 05 SEP 2024 to 03 OCT 2024

NE-4, 05 SEP 2024 to 03 OCT 2024