

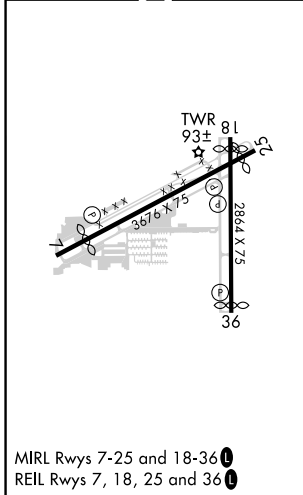
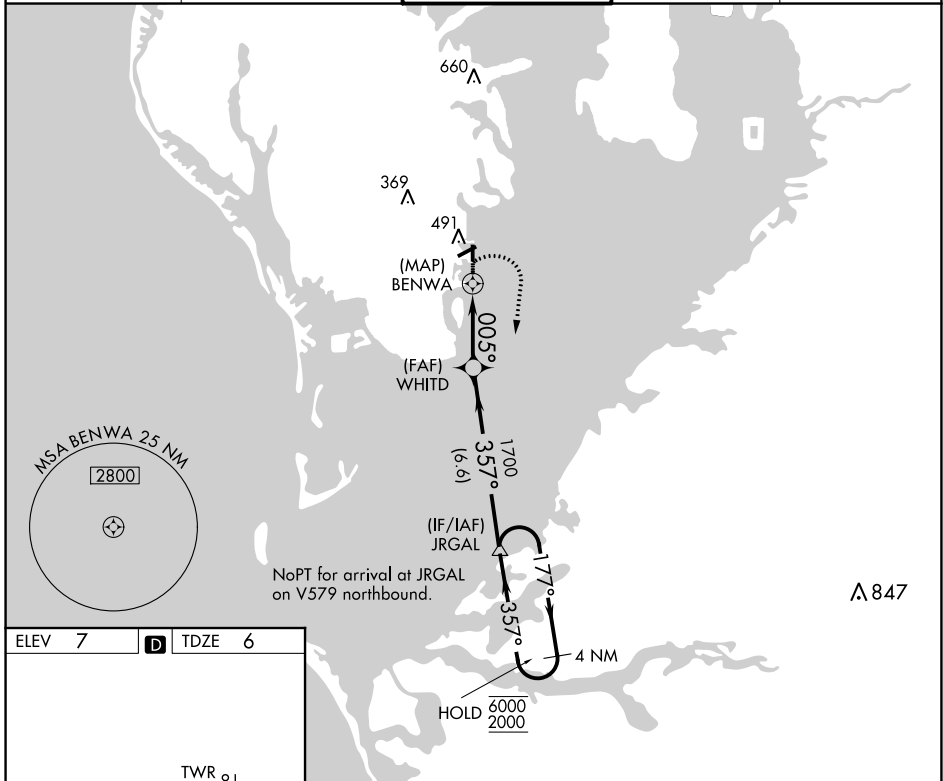
APP CRS <b>005°</b>	Rwy Idg TDZE Apt Elev	<b>2749</b> <b>6</b> <b>7</b>
------------------------	-----------------------------	-------------------------------------

# RNAV (GPS) RWY 36

ALBERT WHITTED (SPG)

RNP APCH - GPS.	MISSED APPROACH: Climbing right turn to 2000 direct JRGAL and hold.
<p>▼ Circling NA northwest of Rwy 7 and 18. Procedure NA at night.</p> <p>▲ Rwy 36 helicopter visibility reduction below 1 SM NA.</p>	

ASOS <b>118.875</b>	TAMPA APP CON <b>119.65 316.05 (EAST)</b> <b>125.3 316.05 (WEST)</b>	WHITTED TOWER ★ <b>127.4 (CTAF) 0 257.6</b>	GND CON <b>121.8</b>	UNICOM <b>122.95</b>
------------------------	--	--	-------------------------	-------------------------



SE-3, 03 OCT 2024 to 31 OCT 2024

SE-3, 03 OCT 2024 to 31 OCT 2024