

APP CRS	Rwy Idg	<b>2674</b>
<b>172°</b>	TDZE	<b>6</b>
	Apt Elev	<b>7</b>

# RNAV (GPS) RWY 18

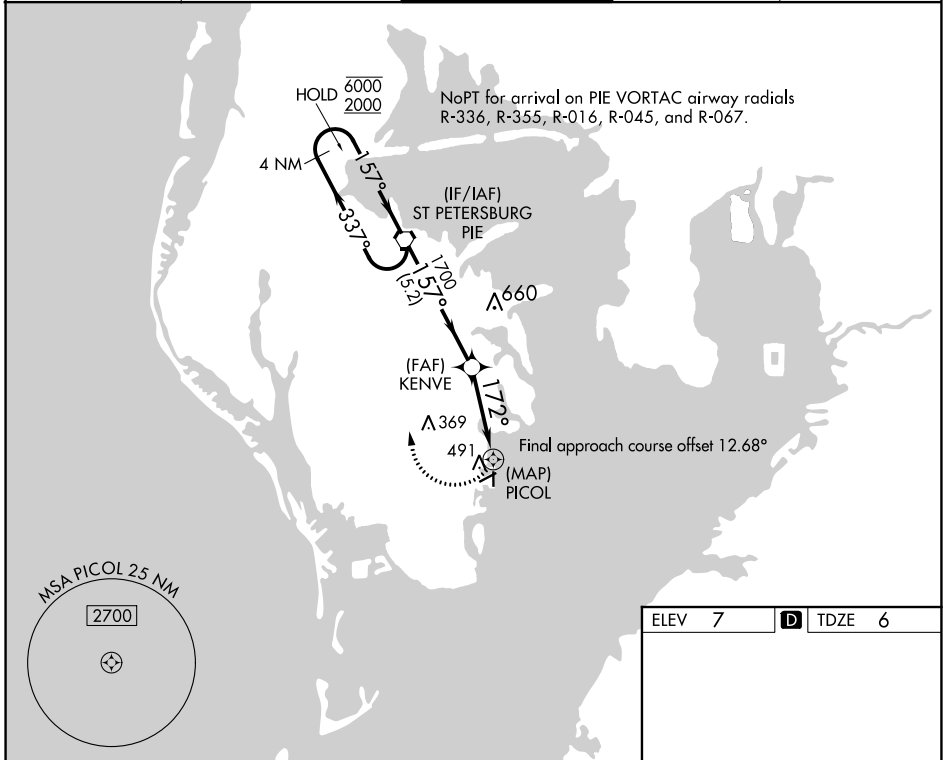
ALBERT WHITTED (SPG)

RNP APCH - GPS.

**▼** Circling NA northwest of Rwy 7 and 18. Procedure NA at night.  
**▲** Rwy 18 helicopter visibility reduction below 1 SM NA.

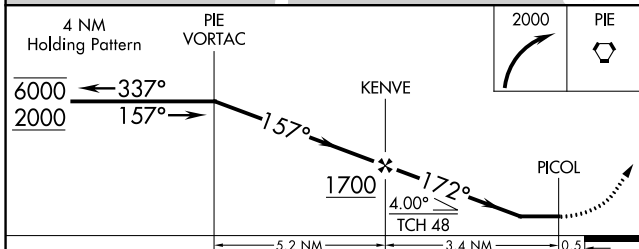
MISSED APPROACH: Climbing right turn to 2000 direct PIE VORTAC and hold.

ASOS <b>118.875</b>	TAMPA APP CON <b>119.65 316.05 (EAST)</b> <b>125.3 316.05 (WEST)</b>	WHITTED TOWER ★ <b>127.4 (CTAF) 0 257.6</b>	GND CON <b>121.8</b>	UNICOM <b>122.95</b>
------------------------	--	--	-------------------------	-------------------------

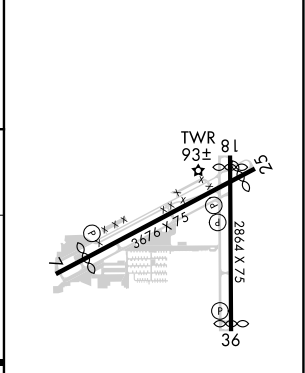


SE-3, 11 JUL 2024 to 08 AUG 2024

SE-3, 11 JUL 2024 to 08 AUG 2024



ELEV 7	<b>D</b> TDZE 6
--------	-----------------



CATEGORY	A	B	C	D
LNVA MDA	800-1 794 (800-1)	800-1¼ 794 (800-1¼)		NA
<b>C</b> CIRCLING	800-1 793 (800-1)	800-1¼ 793 (800-1¼)		NA

MIRL Rwy 7-25 and 18-36  
 REIL Rwy 7, 18, 25 and 36