

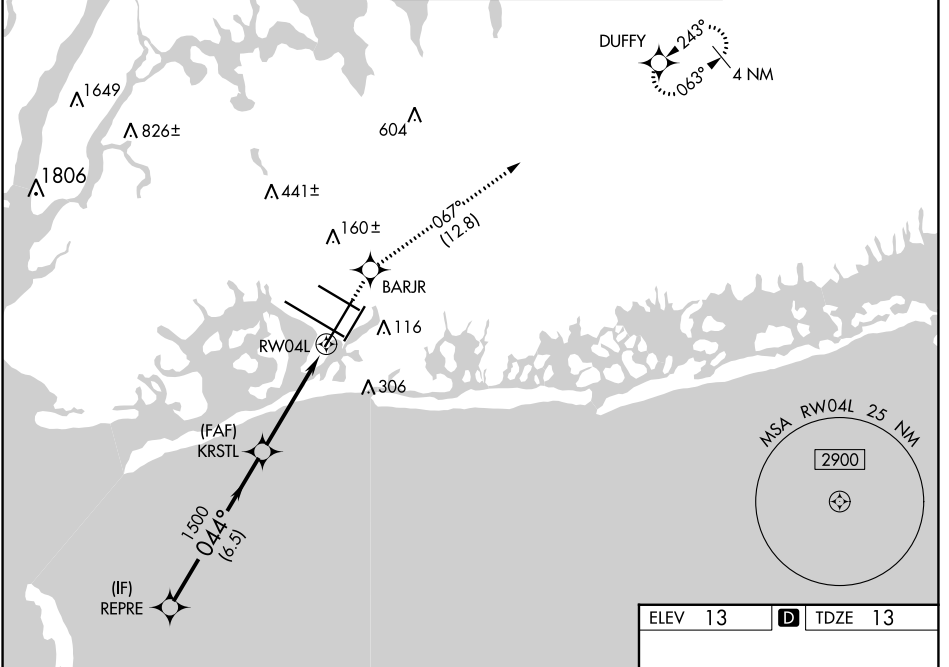
| | | |
|-------------------------|------------------------|--|
| WAAS CH 77519 | APP CRS 044° | Rwy Idg 11010 TDZE 13 Apt Elev 13 |
|-------------------------|------------------------|--|

RNAV (GPS) Y RWY 4L

JOHN F KENNEDY INTL (JFK)

| | |
|---|--|
| RNP APCH. | MISSED APPROACH: (Do not exceed 210K until BARJR) Climb to 3000 direct BARJR and track 067° to DUFFY and hold. |
| Simultaneous approach authorized. Use of FD or AP providing RNAV track guidance required during simultaneous operations. LNAV procedure NA during simultaneous operations. For uncompensated Baro-VNAV systems, LNAV/VNAV NA below -12°C or above 54°C. | |

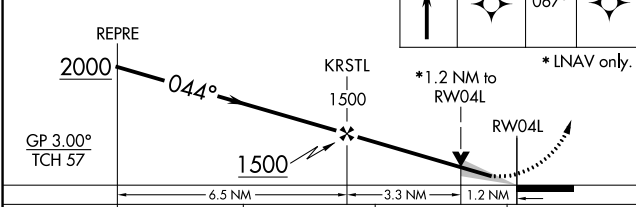
| | | | | | |
|--|--|---|-------------------------------|---------------------------------|-------|
| D-ATIS (ARR/DEP)(ARR-NE) (ARR-SW) 128.725 117.7 115.4 | NEW YORK APP CON 128.125 269.0 | KENNEDY TOWER Rwys 4R/22L and 13L/31R 119.1 281.55 Rwys 4L/22R and 13R/31L 123.9 281.55 | GND CON 121.9 348.6 | CLNC DEL 135.05 348.6 | CPDLC |
|--|--|---|-------------------------------|---------------------------------|-------|



NE-2, 03 OCT 2024 to 31 OCT 2024

NE-2, 03 OCT 2024 to 31 OCT 2024

VGSI and RNAV glidepath not coincident (VGSI Angle 3.00/TCH 75).



| CATEGORY | A | B | C | D |
|-------------------|--------|-------------|------------------------|----------------------|
| LPV DA | | 232/40 | 219 (300-¾) | |
| LNAV/VNAV DA | | 329/50 | 316 (400-1) | |
| LNAV MDA | 480/55 | 467 (500-1) | 480-1⅜ | 467 (500-1⅜) |
| C CIRCLING | 640-1 | 627 (700-1) | 680-1¾ 667 (700-1¾) | 680-2 667 (700-2) |

