

APP CRS <b>314°</b>	Rwy Idg <b>11247</b> TDZE <b>13</b> Apt Elev <b>13</b>
------------------------	--

# RNAV (RNP) Z RWY 31L

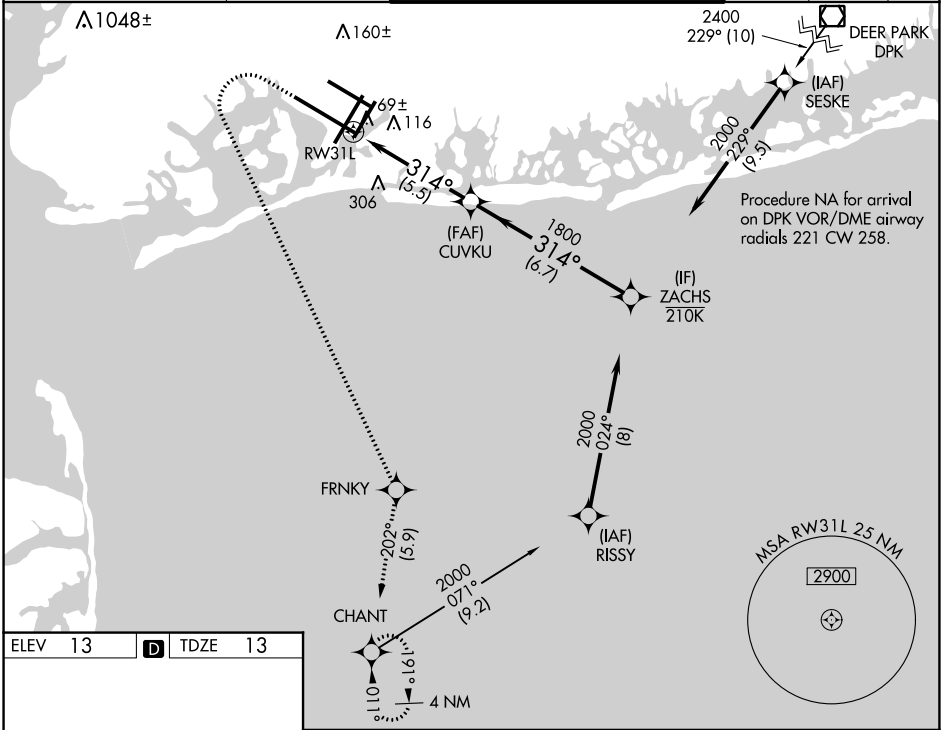
JOHN F KENNEDY INTL (JFK)

RNP AR APCH.

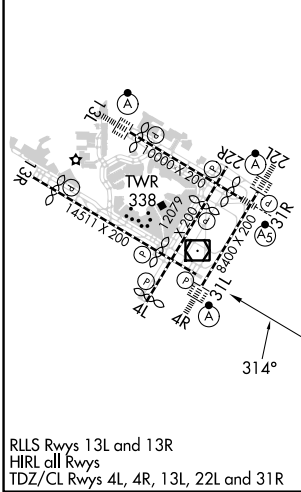
▼ For uncompensated Baro-VNAV systems, procedure NA below -12°C or above 54°C. Simultaneous approach authorized. Use of FD or AP required during simultaneous operations.

MISSED APPROACH: Climb to 500 then climbing left turn to 3000 direct FRNKY and on track 202° to CHANT and hold.

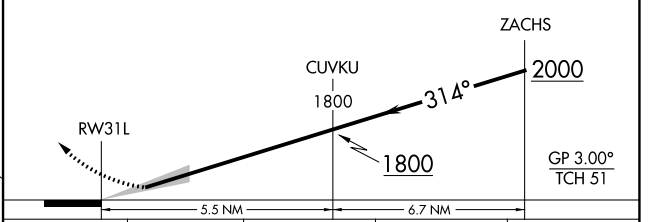
D-ATIS (ARR/DEP)(ARR-NE) (ARR-SW) <b>128.725 117.7 115.4</b>	NEW YORK APP CON <b>128.125 269.0</b>	KENNEDY TOWER Rwys 4R/22L and 13L/31R <b>119.1 281.55</b> Rwys 4L/22R and 13R/31L <b>123.9 281.55</b>	GND CON <b>121.9 348.6</b>	CLNC DEL <b>135.05 348.6</b>	CPDLC
--	--	---	-------------------------------	---------------------------------	-------



ELEV 13	<b>D</b>	TDZE 13
---------	----------	---------



500	3000	FRNKY	CHANT	VGSI and RNAV glidepath not coincident (VGSI Angle 3.00/TCH 74).
↑	↩	✧	tr 202°	✧



CATEGORY	A	B	C	D
RNP 0.30 DA	410-1% 397 (400-1%)			

**AUTHORIZATION REQUIRED**

NE-2, 03 OCT 2024 to 31 OCT 2024

NE-2, 03 OCT 2024 to 31 OCT 2024