

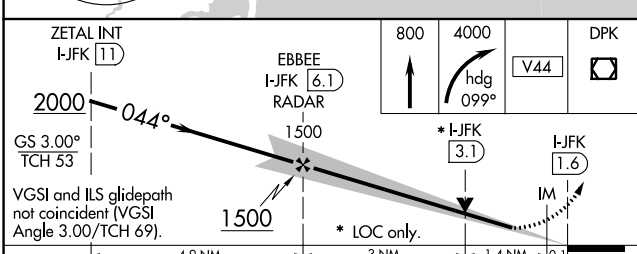
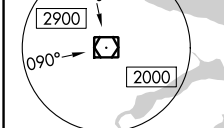
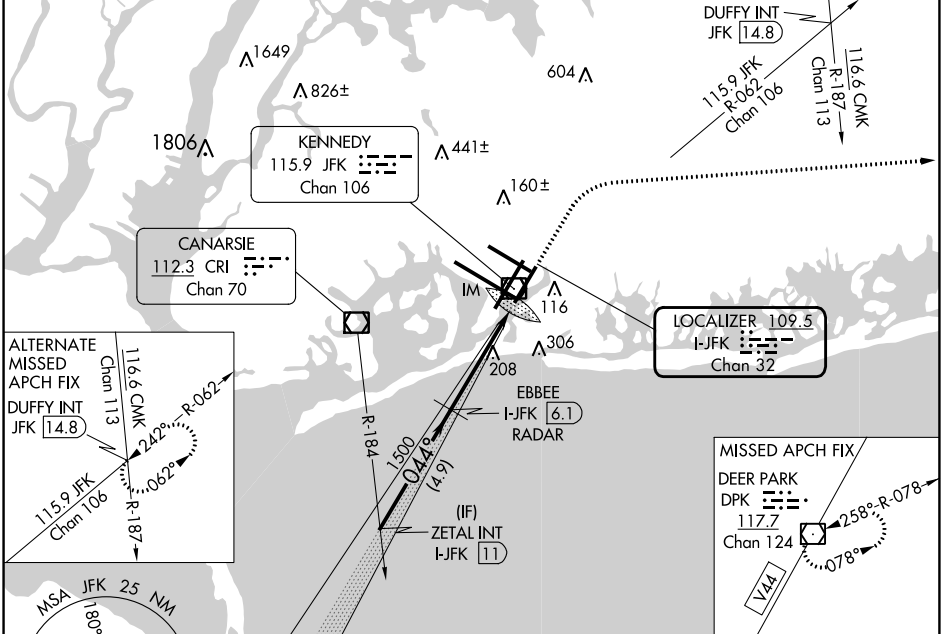
LOC/DME I-JFK	APP CRS	Rwy ldg	8400
<b>109.5</b>	<b>044°</b>	TDZE	<b>12</b>
Chan <b>32</b>		Apt Elev	<b>13</b>

# ILS or LOC RWY 4R

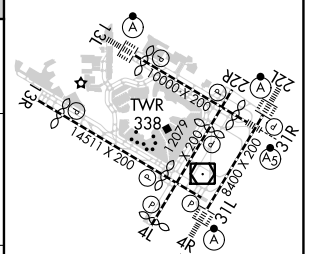
JOHN F KENNEDY INTL (JFK)

RADAR required for procedure entry.		ALSF-2	MISSED APPROACH: Climb to 800 then climbing right turn to 4000 heading 099° and V44 to DPK VOR/DME and hold.	
Simultaneous approach authorized.				

D-ATIS (ARR/DEP)(ARR-NE) (ARR-SW)	NEW YORK APP CON	KENNEDY TOWER Rwys 4R/22L and 13L/31R	GND CON	CLNC DEL	CPDLC
<b>128.725 117.7 115.4</b>	<b>128.125 269.0</b>	<b>119.1 281.55</b>	<b>121.9 135.05</b>	<b>135.05</b>	
		Rwys 4L/22R and 13R/31L	<b>123.9 281.55</b>	<b>348.6</b>	<b>348.6</b>



ELEV 13	TDZE 12
RLS Rwys 13L and 13R	
HIRL all Rwys	
TDZ/CL Rwys 4L, 4R, 13L, 22L and 31R	



CATEGORY	A	B	C	D
S-ILS 4R	212/18		200 (200-1/2)	
S-LOC 4R	540/24	528 (600-1/2)	540/55	528 (600-1)
CIRCLING	640-1	627 (700-1)	680-1 3/4 667 (700-1 3/4)	680-2 667 (700-2)

FAF to MAP 4.5 NM					
Knots	60	90	120	150	180
Min:Sec	4:30	3:00	2:15	1:48	1:30

NE-2, 31 OCT 2024 to 28 NOV 2024

NE-2, 31 OCT 2024 to 28 NOV 2024